



John Nash Mews, E14

£450,000

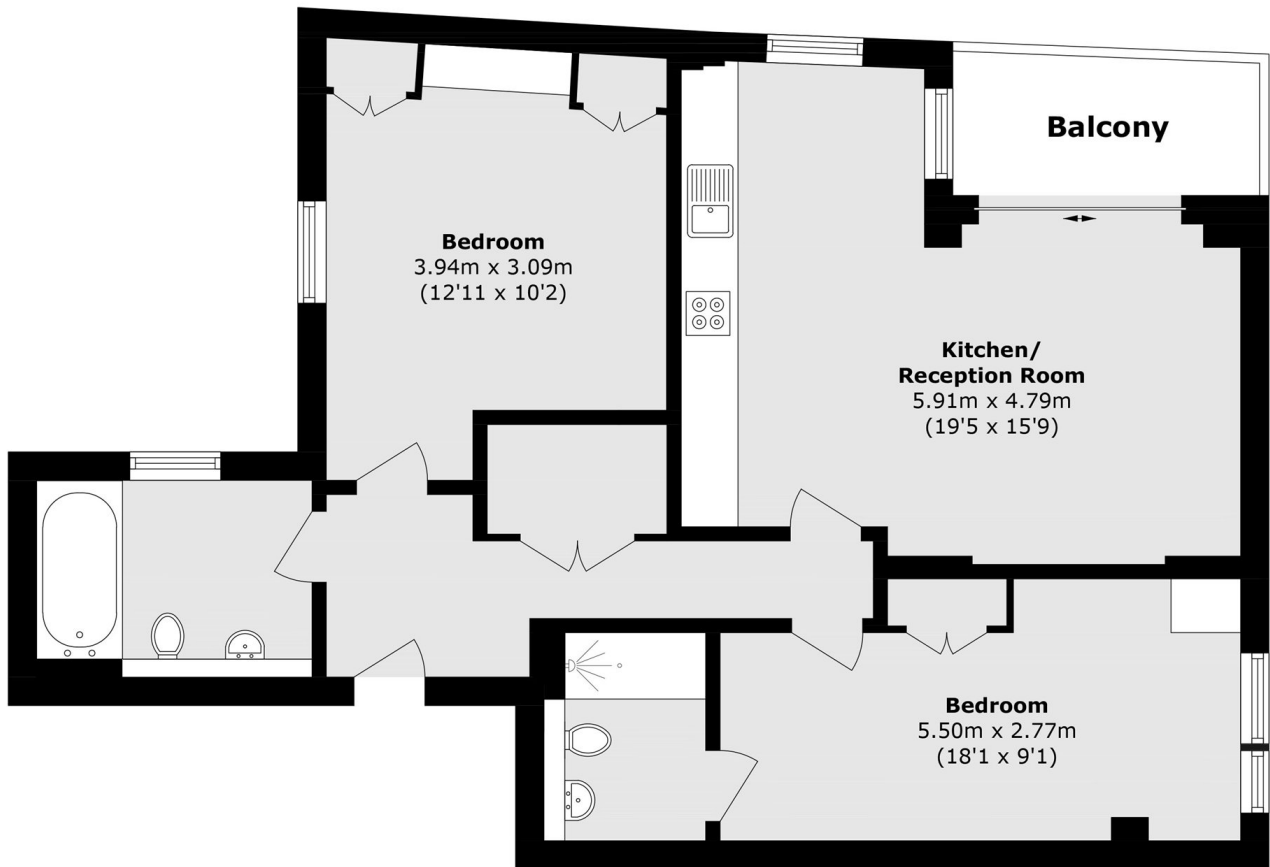
Presented in immaculate condition is this two double bedroom home, offering water and City views from a private balcony. The property features an open-plan reception room, two bathrooms, a lease of approximately 175 years, a secure entry phone system, and lift access.

Lime View Court is conveniently situated within walking distance of Limehouse DLR station, offering excellent connections to Canary Wharf and the City. Thanks to its prime location, this property is an ideal purchase for both professionals and investors alike.

Features

- Water and City Views
- Private Balcony
- Two Bedrooms
- Two Bathrooms
- 175 Year Lease
- No Onward Chain

John Nash Mews, London, E14



Total area (approx.): 74.3 sq. m (799.7 sq. ft)

Balcony area (approx.): 3.9 sq. m (41.9 sq. ft)