



John Nash Mews, E14

£450,000

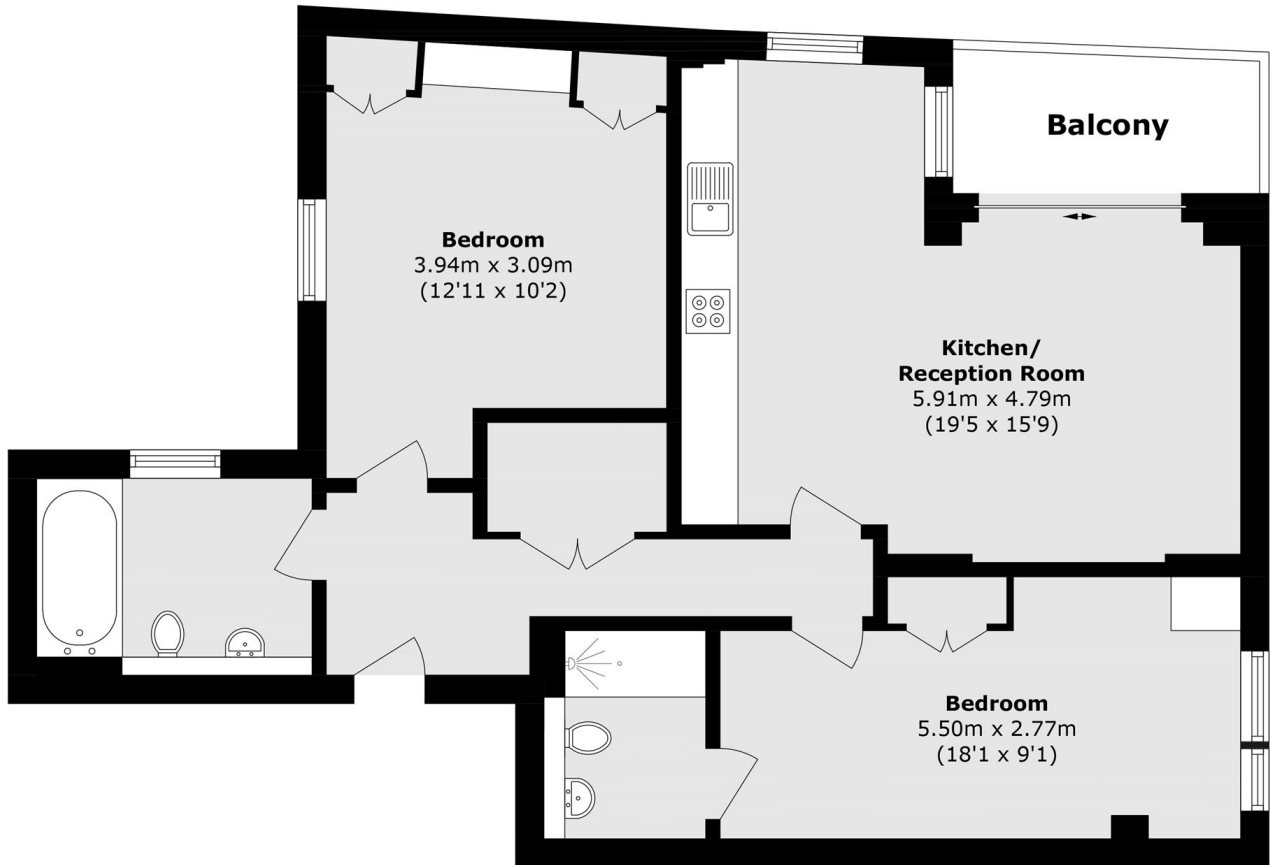
Presented in immaculate condition, this two double bedroom apartment offers water and City views from a private balcony. The property features an open plan reception room, two bathrooms, a lease of approximately 175 years, a secure entry phone system and lift access.

Lime View Court is conveniently located within walking distance of Limehouse DLR station, providing excellent connections to Canary Wharf and the City. The property is also well positioned for access to a range of local amenities and transport links.

Features

- Water and City Views
- Private Balcony
- Two Bedrooms
- Two Bathrooms
- 175 Year Lease
- No Onward Chain

John Nash Mews, London, E14



Total area (approx.): 74.3 sq. m (799.7 sq. ft)

Balcony area (approx.): 3.9 sq. m (41.9 sq. ft)