



Milk Yard, E1W

£525,000

Located within the highly sought-after Riverside Mansions, this well-presented two-bedroom split-level home is offered to the market chain-free. The property benefits from a private balcony, gated allocated parking, secure entry phone access, a lease in excess of 900 years, and a recently refitted bathroom.

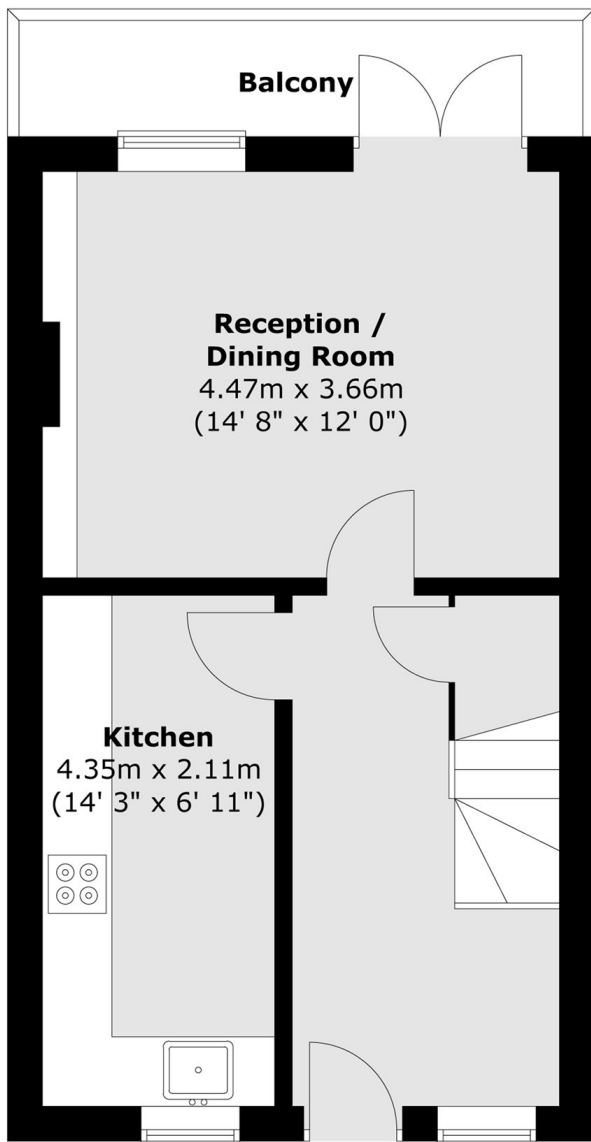
Riverside Mansions is ideally located just 0.3 miles from Wapping Overground Station, providing excellent transport links across the City.

Features

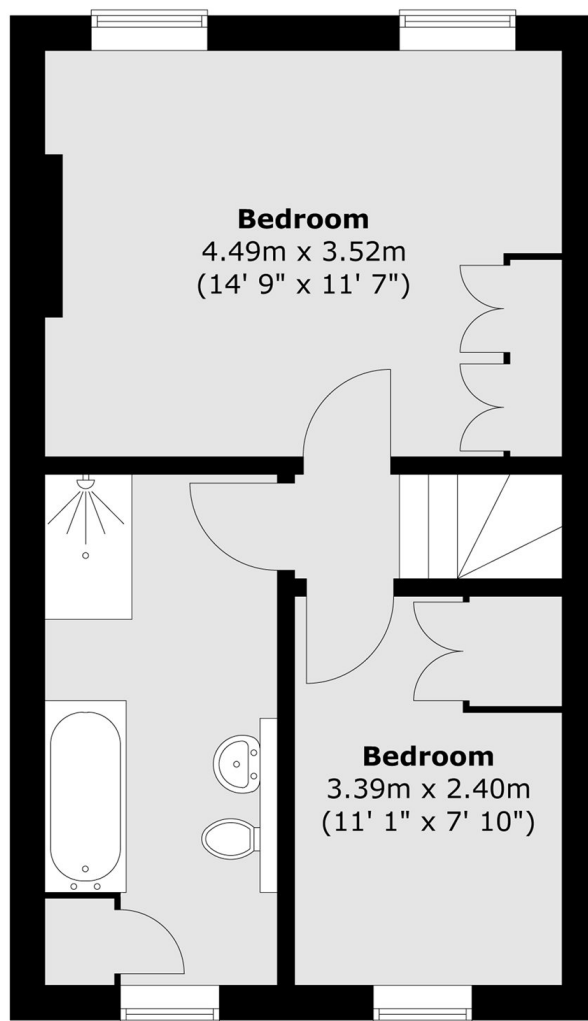
- 776 Square Feet
- Private Balcony
- Split Level
- 990 Plus Year Lease
- Residents Gym
- Day Porter

Milk Yard, London, E1W

Second Floor



Third Floor



Total area (approx.) : 72.1 sq. m (776 sq. ft)
Total balcony area (approx.) : 4.8 sq. m (52 sq. ft)