



Wapping High Street, E1W

£700,000

A much sought after two double bedroom home located within Cinnabar Wharf. The property has an additional 114 sq.ft terrace, secure allocated parking, concierge service, over 900 year lease and is offered with no onward chain.

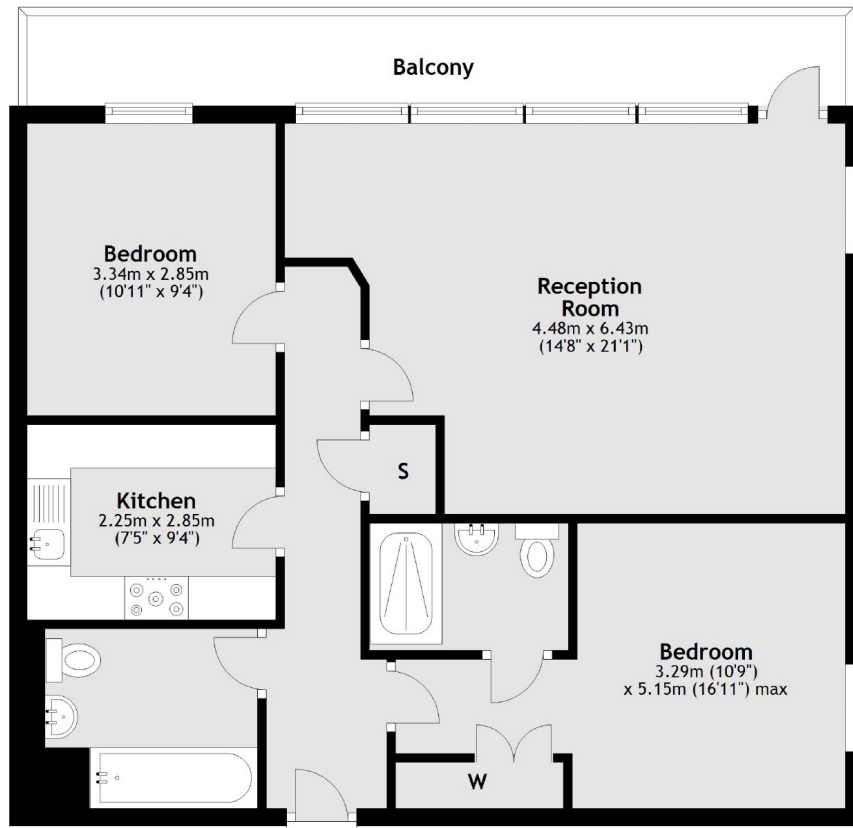
Cinnabar Wharf is ideally located within easy reach of St Katharine Docks which offers a wide variety of cafe's, bars and restaurants with a vibrant atmosphere. Tower Hill (underground), Tower Gateway DLR)and Wapping overground stations are all within close proximity and provide regular transport links across London.

Features

Offers In Excess Of
114 Sq.ft Terrace
Two Bedrooms
Two Bathrooms
West Wapping Location
Secure Allocated Parking

Wapping High Street, London, E1W

Second Floor



Main area: Approx. 73.4 sq. metres (790.5 sq. feet)
Plus balconies, approx. 10.6 sq. metres (114.0 sq. feet)