



## Cable Street, E1W

£425,000

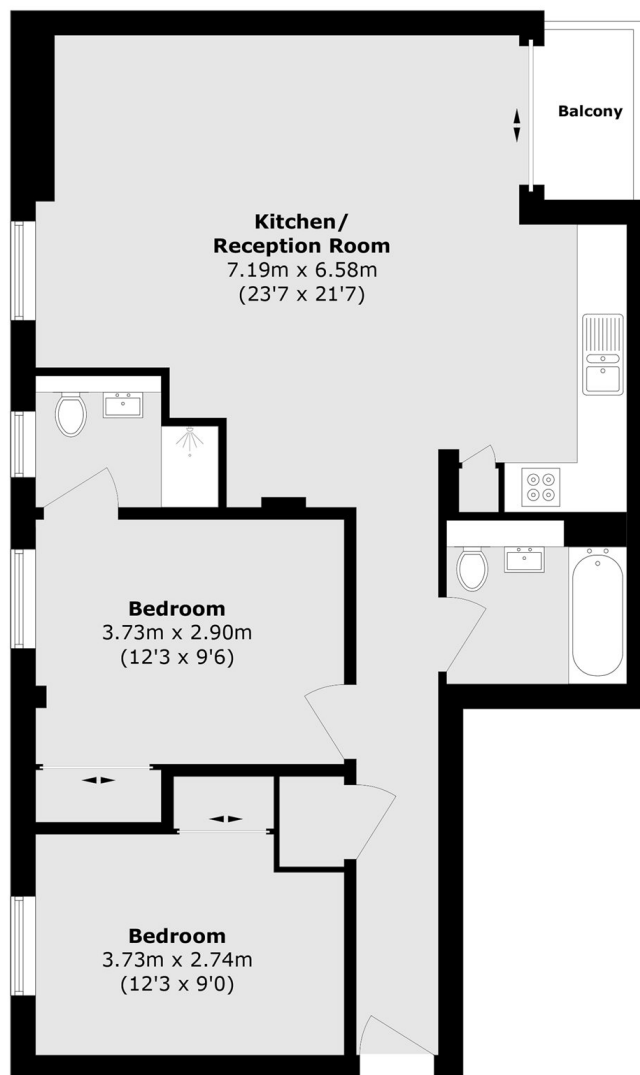
We are pleased to present this two-bedroom apartment, conveniently situated on Cable Street. The property benefits from an abundance of natural light, two equally sized double bedrooms, a secure entry phone system, and a spacious triple-aspect open-plan reception and kitchen area. It also features a south-facing balcony. Residents further benefit from access to a concierge service.

Located close to Wapping and Shadwell, the property is ideally situated to enjoy a wide range of bars, cafés, restaurants and local amenities. Shadwell DLR and Overground stations are approximately 0.4 miles away, while Wapping Station is around a 15-minute walk from the property. Limehouse DLR Station is also within easy reach, at approximately 0.5 miles away.

### Features

- Chain Free
- Two Large Double Bedrooms
- Two Bathrooms
- Concierge Service
- Lift
- Secure Bike Storage

# Cable Street, London, E1W



Total area (approx.): 74.8 sq. m (805.1 sq. ft)

Balcony area (approx.): 2.5 sq. m (26.9 sq. ft)