



Asher Way, E1W

£625,000

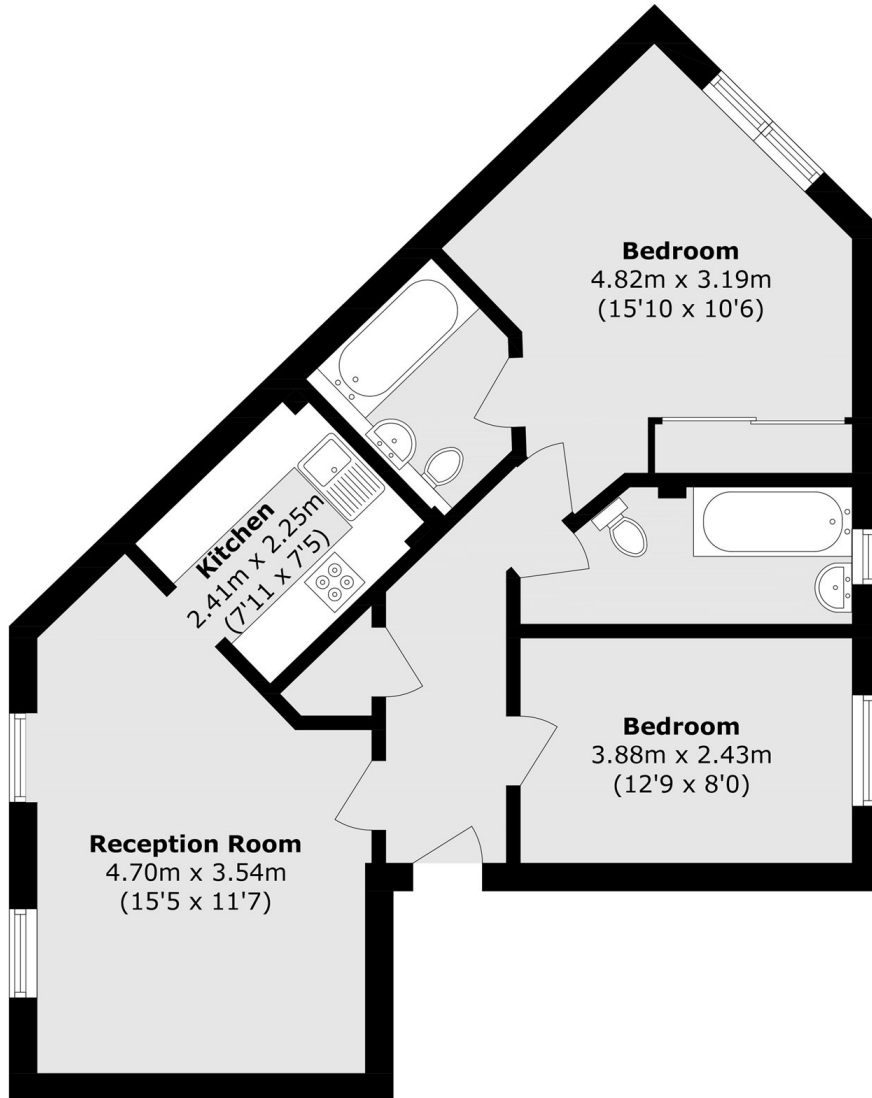
Situated within the highly sought-after Quay 430 development in West Wapping, this well-presented two-bedroom, two-bathroom apartment offers 669 sq ft of internal living accommodation. The property further benefits from a secure entry phone system, allocated parking and concierge service.

Tower Bridge, St Katharine Docks and the City are all within easy reach. Tower Hill and Aldgate stations are both located approximately 0.8 miles from the property, providing excellent transport links across London.

Features

- Allocated Parking
- First Floor
- Gated Development
- Two Double Bedrooms
- Share Of Freehold
- West Wapping

Asher Way, London, E1W



Total area (approx.): 62.2 sq. m (669.5 sq. ft)