



## Thomas More Street, E1W

### £600,000

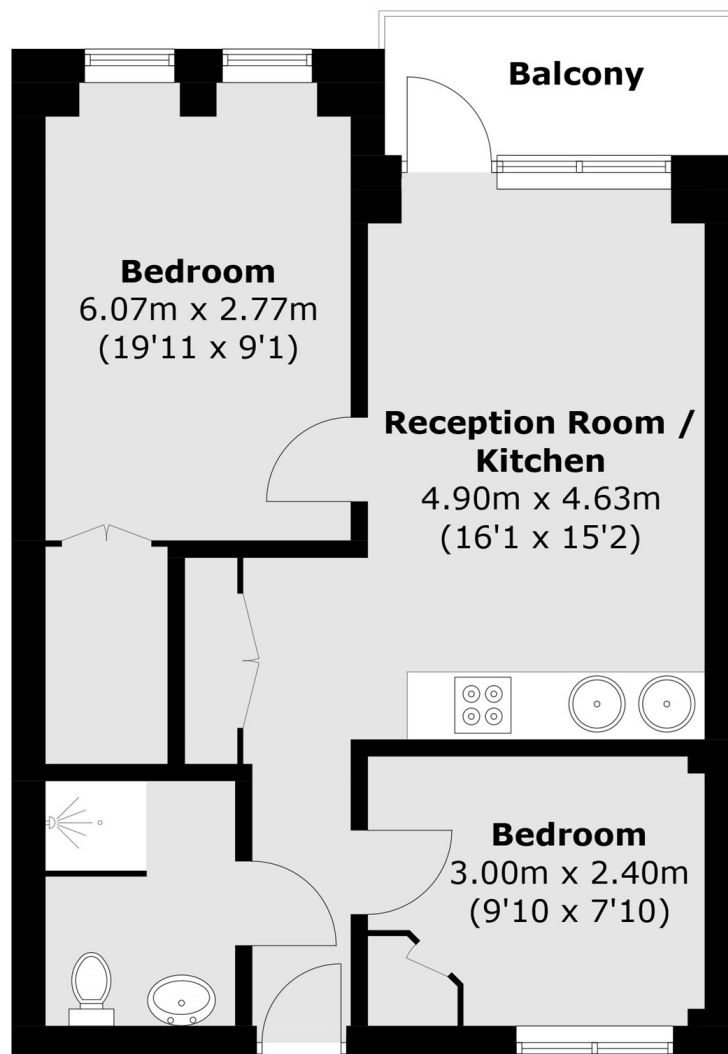
We are pleased to present this two bedroom apartment in a sought after development. This property benefits from an open plan kitchen/living area, an abundance of natural light, integrated appliances and a view directly overlooking St Katharines Dock.

Nightingale House is ideally situated just 0.2 miles from Tower Hill DLR and Underground Station and 0.8 miles from Shadwell Station, both of which provide excellent links to the City and Canary Wharf.

### Features

- Two Bedroom
- Private Balcony
- Natural Sunlight
- Open-plan Kitchen
- Built-in Storage
- Dock Views

# Thomas More Street, London, E1W



Total area (approx.): 46.5 sq. m (500.5 sq. ft)  
Balcony: 3.8 sq. m (40.9 sq. ft)