



## Thomas More Street, E1W

### £600,000

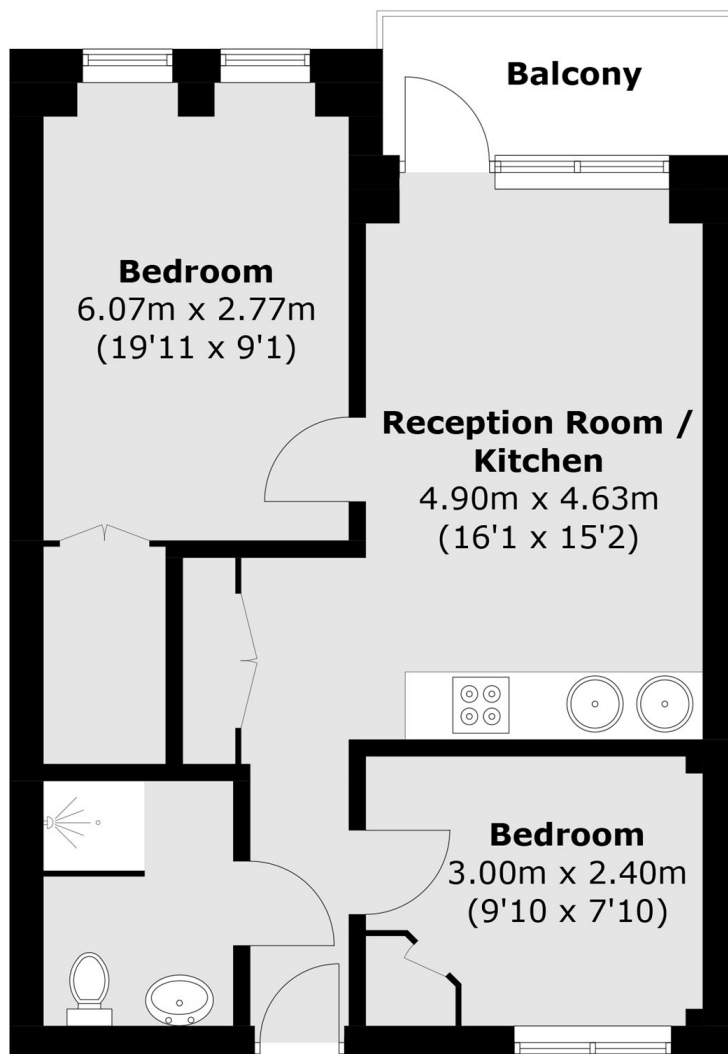
Located within a sought after development, this two bedroom apartment benefits from an open plan kitchen and living area, integrated appliances, an abundance of natural light and views directly overlooking St Katharine Docks.

Nightingale House is ideally situated just 0.2 miles from Tower Hill DLR and Underground Station and 0.8 miles from Shadwell Station, both providing excellent connections to the City and Canary Wharf.

### Features

- Two Bedroom
- Private Balcony
- Gated Parking
- Open-plan Kitchen
- Built-in Storage
- Dock Views

# Thomas More Street, London, E1W



Total area (approx.): 46.5 sq. m (500.5 sq. ft)  
Balcony: 3.8 sq. m (40.9 sq. ft)