



Prospect Place, E1W

£700,000

Dexters



Prospect Place, E1W

Set within the sought-after gated development of Prospect Place, we are pleased to present this beautifully maintained two-bedroom end-of-terrace home, offering a rare opportunity to acquire a share of freehold property in the heart of Wapping.

Presented in immaculate condition throughout, the house has been lovingly cared for by its current owners and retains many of its original features from when it was first purchased new, giving the home a warm and timeless character.

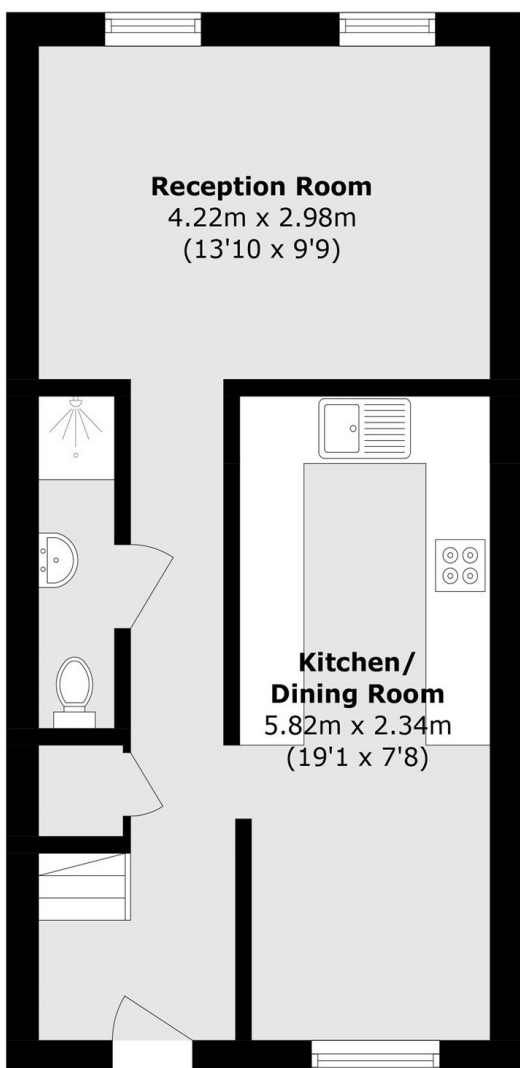
The property further benefits from a private garage, an increasingly rare luxury in this part of London, as well as the added privacy and abundance of natural light afforded by its end-of-terrace position. This is a wonderful home for those seeking character, security and convenience in equal measure.

Features

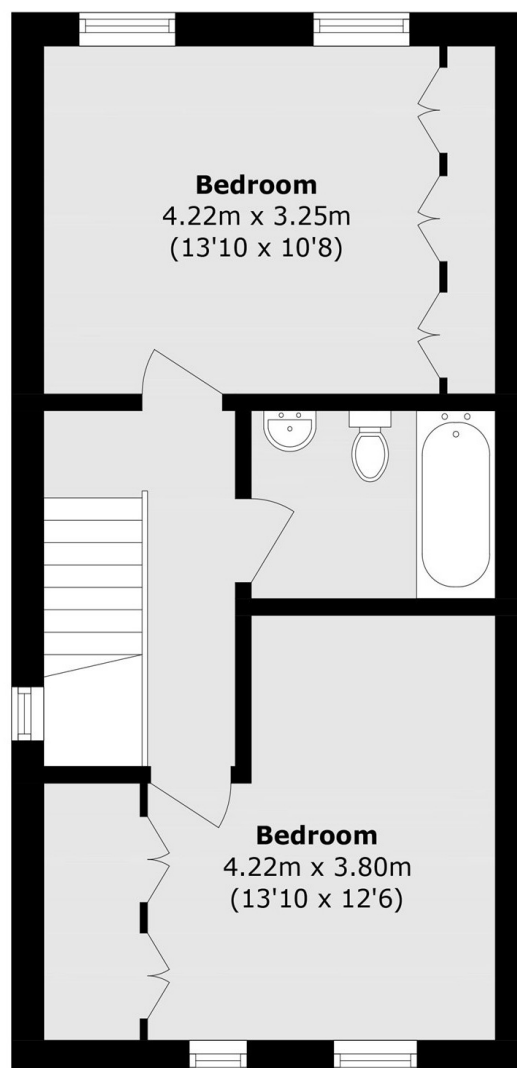
- End Of Terrace
- Two Bedroom
- Private Garage
- Share Of Freehold
- Gated Development
- Original Features



Prospect Place, London, E1W



Ground Floor



First Floor

Total area (approx.): 75.0 sq. m (807.3 sq. ft)