

## Jardine Road, E1W

£575,000

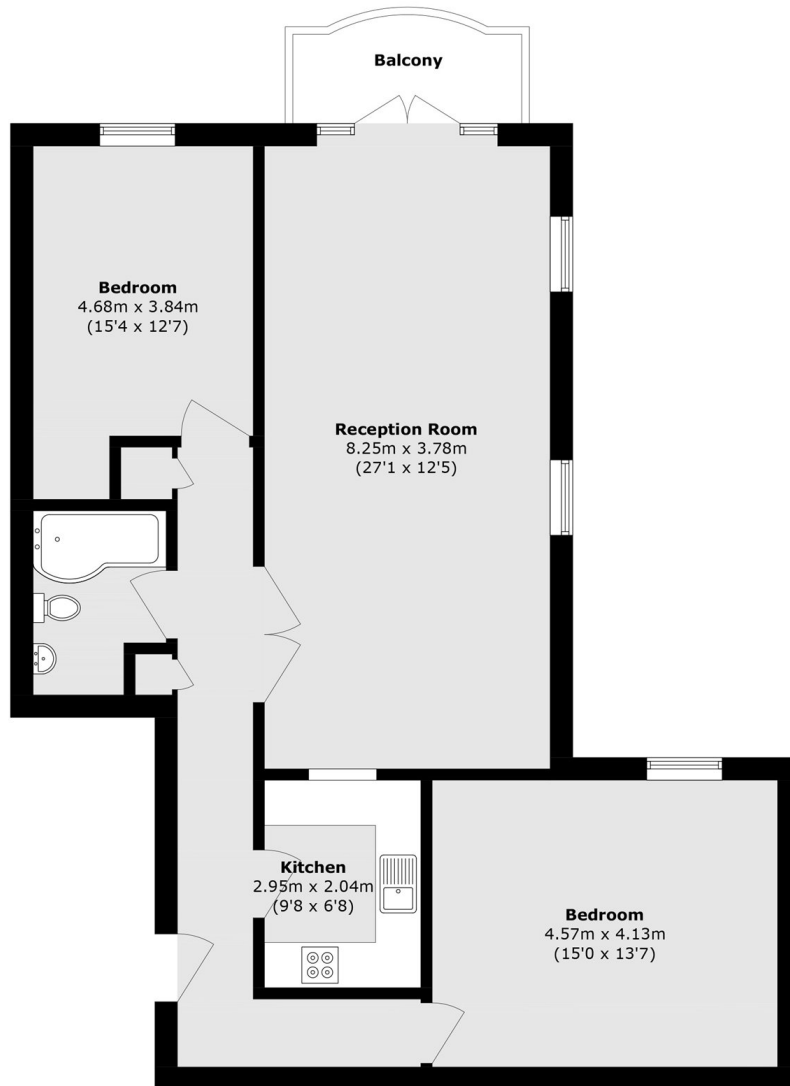
Offered to the market chain free, we are pleased to present this two-bedroom apartment within one of Wapping's most sought-after developments. Secure and well maintained, the property benefits from an entry phone system, two generously sized bedrooms, balcony access from the reception room with views of the River Thames, an abundance of natural light, and approximately 920 sq ft of living space. Residents also benefit from a concierge service and access to a private riverside walk located behind the development.

The Mauretania Building is conveniently situated just off The Highway, providing easy access to Canary Wharf and the Isle of Dogs via the Limehouse Link. The Docklands Light Railway at Limehouse is approximately 0.3 Miles from the development, offering excellent connections to the City and Canary Wharf.

### Features

- Two Double Bedrooms
- Parking Available
- Private Concierge
- River Views
- Secure Development
- 920 Square Feet

# Jardine Road, London, E1W



## Third Floor

Total area (approx.): 85.5 sq. m (920.3 sq. ft)

Balcony area (approx.): 3.9 sq. m (42.0 sq. ft)