



Clarence Mews, E5

£650,000

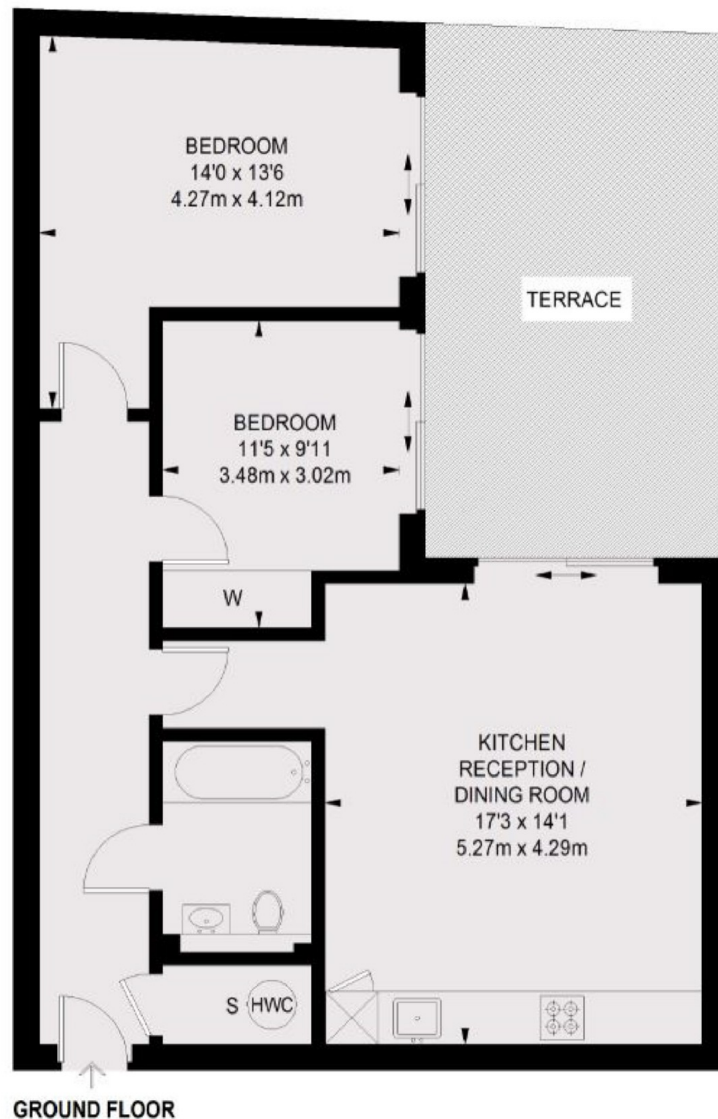
Launching Soon - 46 Clarence Mews is a collection of 5 boutique apartments nestled amongst listed buildings, just around the corner from the historic Clapton Square.

An 8 minute walk to Hackney Downs Station and Hackney Central Station. Situated in the heart of a conservation area, this scheme provides the rare opportunity to purchase a beautiful new home in a part of Hackney steeped in history.

Features

2 Bed Apartment
Large Private Terrace
South East Facing
Secluded Location
Floor to Ceiling Windows
Clayworks Feature Wall
Plykea Kitchen
Matt Black Ironmongery
Completion Q4 2020
CGI's shown are of the 3 Bed

Clarence Mews, London, E5



APARTMENT 2
712 SQ. FT.
TERRACE = 194 SQ. FT.

Contact

To arrange a viewing call our office on the number below or visit our website.



Energy Rating: . We aim to make our particulars both accurate and reliable. However they are not guaranteed; nor do they form part of an offer or contract. If you require clarification on any points then please contact us, especially if you're traveling some distance to view. Please note that appliances and heating systems have not been tested and therefore no warranties can be given as to their good working order.