

An aerial, black and white photograph of a dense urban landscape in London. The image shows a variety of architectural styles, from modern glass-fronted buildings to older, more traditional structures. A prominent feature is the large, domed St. Paul's Cathedral on the right side of the frame. The city is packed with buildings, and the overall scene conveys a sense of a bustling, historic metropolis.

THE DENIZEN

CITY OF LONDON

Taylor
Wimpey
Central London

Designed for City living

The City is London's innermost layer. And it's here you'll find The Denizen – a sophisticated collection of new apartments offering elegant living spaces, premium amenities, impeccable service and tranquil green spaces.



Computer generated image is indicative only

Discover the life within

From smart one-bedroom retreats to spacious three-bedroom homes, this elegant address shines with luxurious details and inner calm. Complemented by resident entertainment rooms and private outdoor spaces, it's a refined City haven.

Our apartments are everything a contemporary City home should be: spacious, bright, elegant and tranquil. Individual balconies and terraces answer the need for an outdoor retreat from urban life, and the concierge services are your ally to help navigate life in the world's most exciting capital.



Computer generated image is indicative only



Crossrail

- From Farringdon station:
- Bond Street 4 minutes
 - Paddington 8 minutes
 - Heathrow Airport 32 minutes

Walk

- St Paul's 6 minutes
- Shoreditch High Street 8 minutes
- Covent Garden 15 minutes
- Tate Modern 16 minutes

Cycle

- St Paul's 6 minutes
- Shoreditch High Street 8 minutes
- Covent Garden 15 minutes
- Tate Modern 16 minutes

Tube

- From Moorgate station:

 - Bank 1 minute
 - Old Street 2 minutes
 - London Bridge 3 minutes
 - Canary Wharf 16 minutes
 - Heathrow Airport 58 minutes
- From Barbican station:

 - Farringdon 1 minute
 - Liverpool Street 6 minutes
 - Kings Cross St Pancras 7 minutes
 - Knightsbridge 25 minutes
 - City Airport 37 minutes

Journey times are indicative only and are estimated using Google Maps, from The Denizen. The map is a graphic representation and is indicative only.

Effortlessly accessible

With Barbican, Farringdon and Moorgate stations minutes away, you're perfectly positioned to access the capital with ease. Crossrail at both Farringdon and Liverpool Street stations suddenly puts the whole of London on your doorstep – be at a West End theatre in three minutes or Heathrow in a swift 32.

London Underground





Computer generated images are indicative only

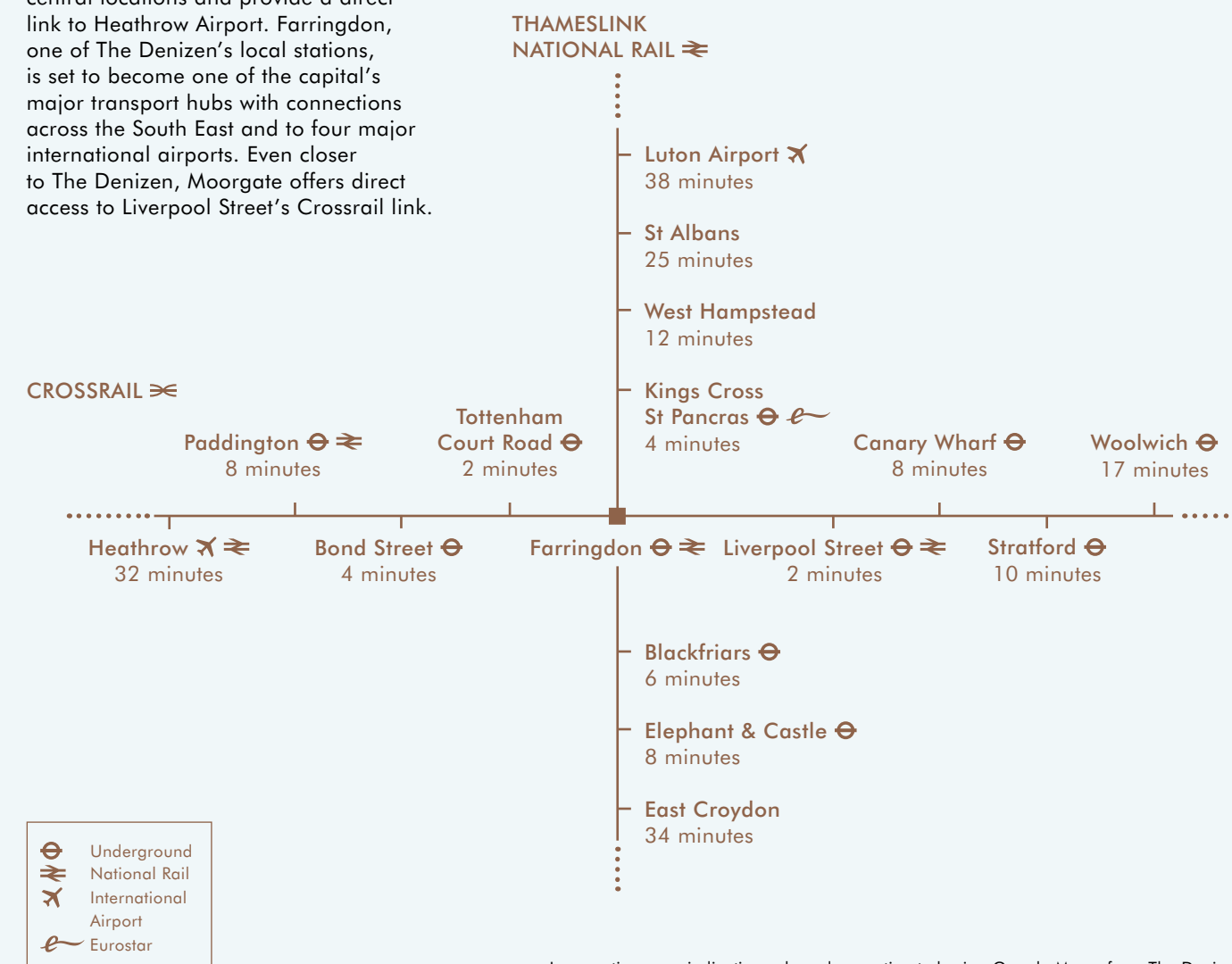
Left: Crossrail station at Liverpool Street
Right: Crossrail station at Farringdon, a 12 minute walk from The Denizen



Farringdon hub with Crossrail ☯ ➡ ➡

Next year, the Elizabeth Line comes to town. Putting a fast and efficient train service through the heart of the capital will change how Londoners travel. This ambitious project will connect key central locations and provide a direct link to Heathrow Airport. Farringdon, one of The Denizen's local stations, is set to become one of the capital's major transport hubs with connections across the South East and to four major international airports. Even closer to The Denizen, Moorgate offers direct access to Liverpool Street's Crossrail link.

Crossrail Elizabeth Line opening soon



Journey times are indicative only and are estimated using Google Maps, from The Denizen.



Left: Maughan Library,
King's College
Right: Graduation ceremony,
Barbican Centre



A higher education within reach

The world’s hungriest minds come to London to learn. The capital is home to over 40 globally renowned universities and higher education establishments. Seven of the best are located near the City, making The Denizen an ideal base for students.

<div>University College London</div> <div>Gower Street, WC1 3km away 16 minutes cycle</div>	<div>King’s College London</div> <div>Strand, WC2 2km away 14 minutes cycle</div>	<div>City, University of London</div> <div>Northampton Square, EC1 1km away 5 minutes cycle</div>	<div>Central Saint Martins</div> <div>Granary Square, N1C 3km away 15 minutes cycle</div>
<div>Guildhall School of Music & Drama</div> <div>Silk Street, EC2Y 0.6km away 4 minutes cycle</div>	<div>London School of Economics</div> <div>Houghton Street, WC2 2km away 12 minutes cycle</div>	<div>Cass Business School</div> <div>Bunhill Row, EC1 1km away 2 minutes cycle</div>	

Journey times are indicative only and are estimated using Google Maps, from The Denizen.

Computer generated image is indicative only



Left: The Ned is home to nine exquisite restaurants, all housed in a beautifully restored architectural masterpiece.
Bottom Left: St. Paul's Cathedral holds its own alongside the City's spectacular modern architecture.



Above: Yauatcha, at Broadgate Circle, is the Hakkasan Group's Cantonese dim sum teahouse and patisserie.



All information was correct at the time of print.



Left: Workshop Coffee at White Collar Factory, in Old Street, are passionate, and, to prove it, they have their own roastery.

Below: In the heart of the city, Albion offers a curated selection of groceries and also prepares crisp, home-baked croissants.



The area

People who live and work here know there's more to the City than finance and business. Look a little closer, and you'll find a diverse area to explore and enjoy. From artisan coffee to Michelin stars on your doorstep, you couldn't hope to be better served. With both Underground and Crossrail a casual stride away, you could hardly be better connected.

Right: The Modern Pantry, in Farringdon, offers a relaxed atmosphere perfectly suited for a weekend brunch and cocktails.





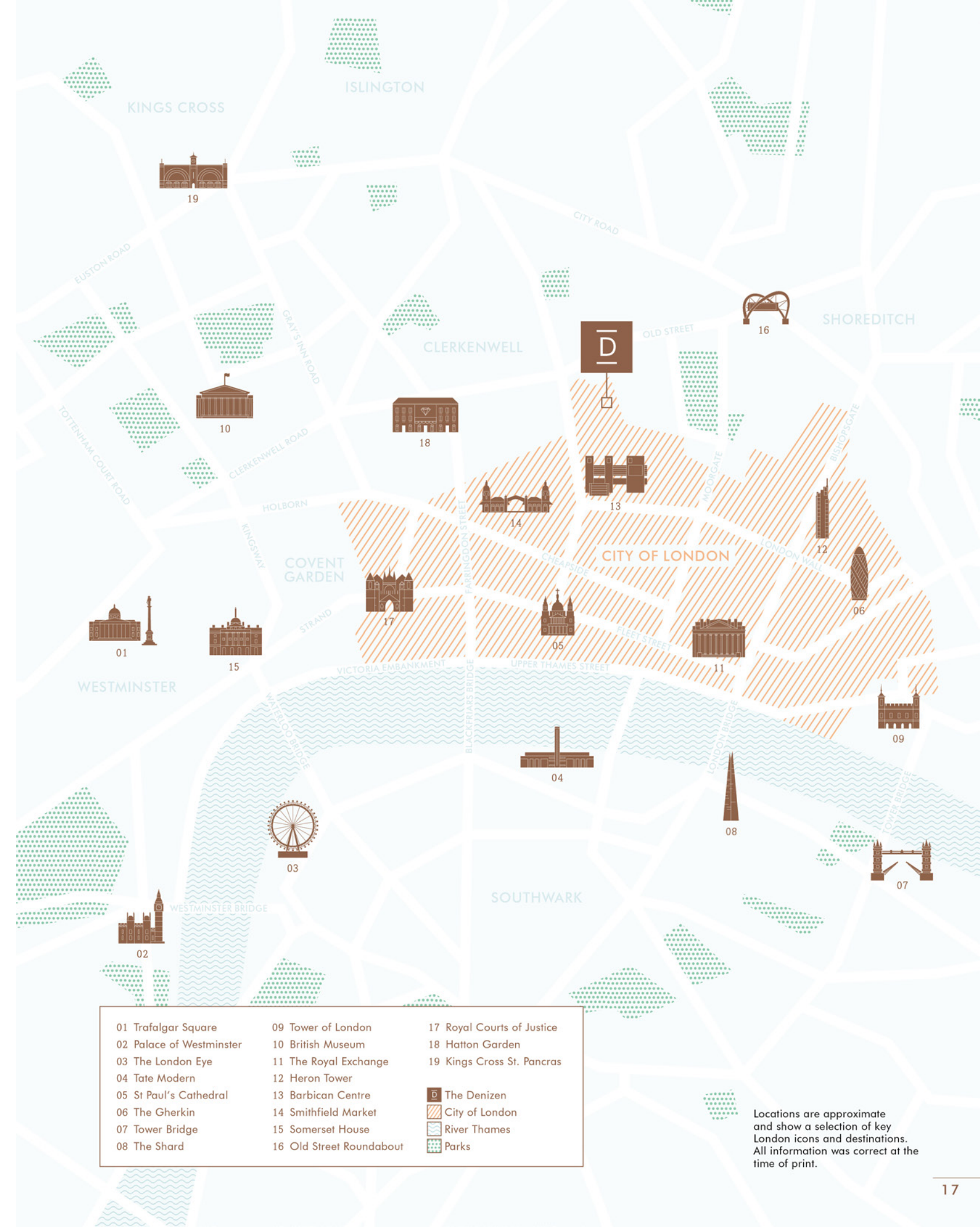
Left: The Shakespeare monument outside the Guildhall Art Gallery in the City of London



The Barbican — where commerce meets culture



The Barbican is the ancient heart of the City of London, a place steeped in history. During the 17th Century, it attracted the entrepreneurial, the conspiring and the artistic. In the area's many coffeehouses, plans were laid, and great minds met. William Shakespeare, Ben Johnson and John Milton all worked here. It's a legacy we see today in the Barbican Centre and the City's enterprising spirit.



Explore your life within



Dining

- 01 Angler*
- 02 Bleeding Heart
- 03 Bread Street Kitchen
- 04 City Social*
- 05 Club Gascon*
- 06 Granger & Co
- 07 Hix Oyster & Chop House
- 08 HKK*
- 09 José Pizarro
- 10 Oxo
- 11 Roka
- 12 Skylon
- 13 Sosharu
- 14 St. John*
- 15 Sushi Samba
- 16 The Grill on the Market
- 17 The Jugged Hare
- 18 The Modern Pantry
- 19 Wahaca
- 20 Yauatcha



Culture

- 01 Art Moorhouse
- 02 Barbican Centre
- 03 Barbican Cinema
- 04 BFI IMAX
- 05 Dreamspace Gallery
- 06 Guildhall Art Gallery
- 07 Hayward Gallery
- 08 London Symphony Orchestra
- 09 National Theatre
- 10 Sadler's Wells
- 11 Shakespeare's Globe
- 12 Signal Gallery
- 13 Somerset House
- 14 Southbank Centre
- 15 Tate Modern

*Michelin star
The Denizen
River Thames
Parks



Drinks & private members clubs

- 01 Baranis
- 02 Bounce
- 03 Coq d'Argent
- 04 The Curtain
- 05 Devonshire Club
- 06 Eight Club Moorgate
- 07 Kanaloa
- 08 Madison
- 09 The Ned
- 10 Oriole
- 11 The Secret Garden
- 12 Shoreditch House
- 13 The Walbrook Club
- 14 The Zetter Townhouse
- 15 Vertigo 42
- 16 1 Lombard Street
- 17 28-50 Wine Workshop & Kitchen
- 18 155 Bar & Kitchen



Shopping

- 01 Clerkenwell London
- 02 House of Hackney
- 03 Ochre
- 04 Oliver Spencer
- 05 One New Change including: Hugo Boss, L.K.Bennett, Reiss, Sweaty Betty
- 06 Persephone Books
- 07 Royal Exchange including: Boodles, Aspinall, Hermes, Paul Smith
- 08 SCP
- 09 Spitalfields Market
- 10 Sunspel
- 11 Universal Works
- 12 Viaduct
- 13 Vitra
- 14 Waitrose



Health & lifestyle

- 01 Barry's Bootcamp
- 02 Blue Cow Yoga
- 03 Boom Cycle
- 04 CitySport
- 05 Fight City Gym
- 06 Golden Lane Sport & Fitness
- 07 Matt Roberts Personal Training
- 08 Nuffield Health & Fitness
- 09 Virgin Active Moorgate
- 10 Virgin Active Barbican
- 11 1Rebel



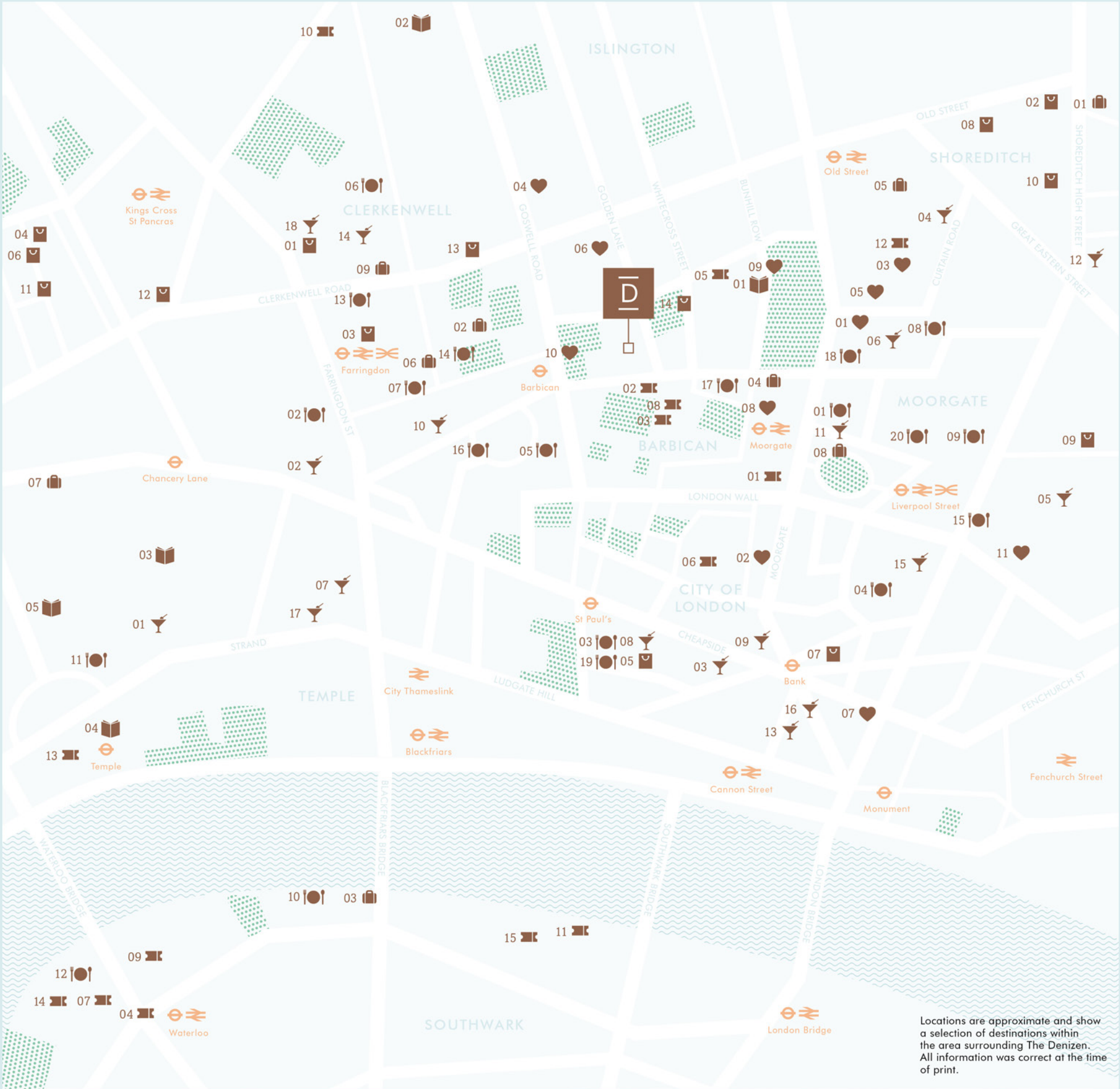
Hotels

- 01 Ace Hotel
- 02 Malmaison
- 03 Mondrian London
- 04 The Montcalm
- 05 Nobu Hotel
- 06 The Rookery
- 07 Rosewood London
- 08 South Place Hotel
- 09 The Zetter Hotel



Education

- 01 Cass Business School
- 02 City, University of London
- 03 Maughan Library
- 04 King's College London
- 05 LSE



Locations are approximate and show a selection of destinations within the area surrounding The Denizen. All information was correct at the time of print.

A food-lover's paradise

In the City, food is always beautifully crafted, with no fewer than five Michelin starred restaurants within walking distance. For a perfect foodie weekend, catch a casual breakfast at The Modern Pantry, stroll over to Broadgate for tapas and a Rioja at José Pizarro and finally drop into the Jugged Hare for a late supper with a pint. From The Denizen, something good to eat is never very far away.

*Right: Sushi Samba
Below: City Social*



Top: Hermes, Royal Exchange
 Middle: Church's
 Bottom: Connock & Lockie
 Right: Louis Vuitton, Royal Exchange



A showcase for the world's favourite brands



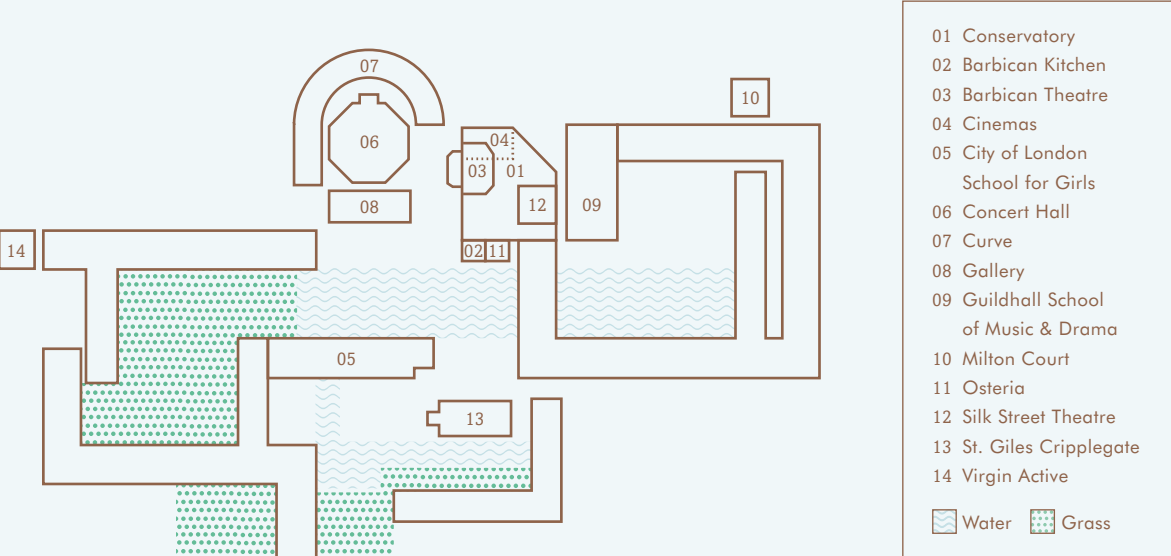
The City is a neighbourhood for those in the know. Corners and side streets play host to a plethora of top-notch brands, independent boutiques and heritage outfitters. The Royal Exchange makes a statement of refined sophistication, showcasing the world's favourite jewellery and luxury accessory brands, while nearby Clerkenwell is the undisputed centre of furniture design.



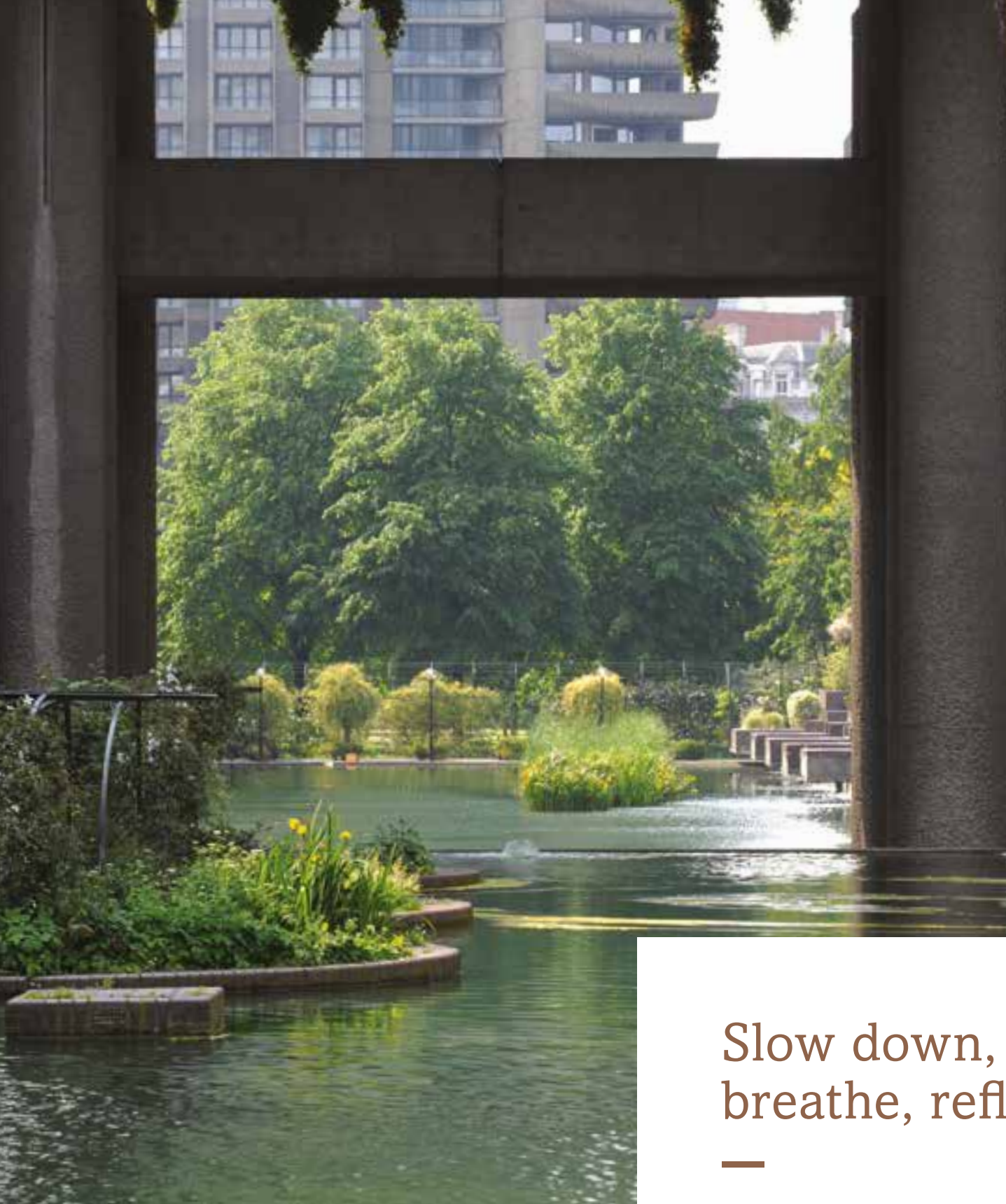
Top: Barbican Kitchen
Right: Lakeside, Barbican
copyright Lee Mawdsley

The Barbican Centre

Not only a hub of cultural activity, the Barbican Centre has much more to offer. Kick start your day with a workout at the centre’s Virgin Gym, followed by a trip to Barbican Kitchen’s deli counter for a light snack. For lunchtime and evening dining, Osteria serves up refined Italian food whilst Bonfire is home to succulent burgers and rotisserie chicken. At the end of the day, catch one of the latest releases or a special screening at the Barbican’s independent cinema.



- 01 Conservatory
- 02 Barbican Kitchen
- 03 Barbican Theatre
- 04 Cinemas
- 05 City of London School for Girls
- 06 Concert Hall
- 07 Curve
- 08 Gallery
- 09 Guildhall School of Music & Drama
- 10 Milton Court
- 11 Osteria
- 12 Silk Street Theatre
- 13 St. Giles Cripplegate
- 14 Virgin Active



Slow down, breathe, reflect

Outside space is the antidote to a busy working day, providing us with a place to relax and unwind. And it’s easy to escape urban life in London, with its abundant green spaces, riverside walks and rooftop bars. For your very own outdoor sanctuary in the City, look no further than our pocket park, terraces and balconies.

Your new home

In the vibrant heart of the City of London, an area rich in culture and architectural history, The Denizen offers a calm, sophisticated environment that delivers the very best of modern city living.

A contemporary and elegant landmark, it was crucial that The Denizen felt like more than a piece of architecture. With every detail considered, it is a haven for residents to unwind, with private terraces perfect for a morning coffee in the summer sun.

Green space is plentiful, with a landscaped courtyard and sunken gardens. The accompanying pocket park offers a secluded area away from the hustle and bustle of The City. A private residents' lounge, games room and cinema cement The Denizen as a home where residents can both relax and socialise.



Above: Artist's impression



Computer generated image is indicative only



Left: Concierge

Design and detail make the difference

With the interiors of our apartments and communal areas, our designers have achieved an eloquent articulation of contemporary City luxury. Using meticulously chosen materials and finishes, light, colour, texture and tone blend harmoniously to create an atmosphere that both uplifts and calms.



Computer generated images are indicative only

Above: Games room
 Left: Cinema room
 Right: Residents' study



Inviting communal spaces

The Denizen is much more than a beautiful home. Through the provision of wonderful communal spaces, it invites relaxation, offers entertainment and welcomes guests.



Computer generated images are indicative only

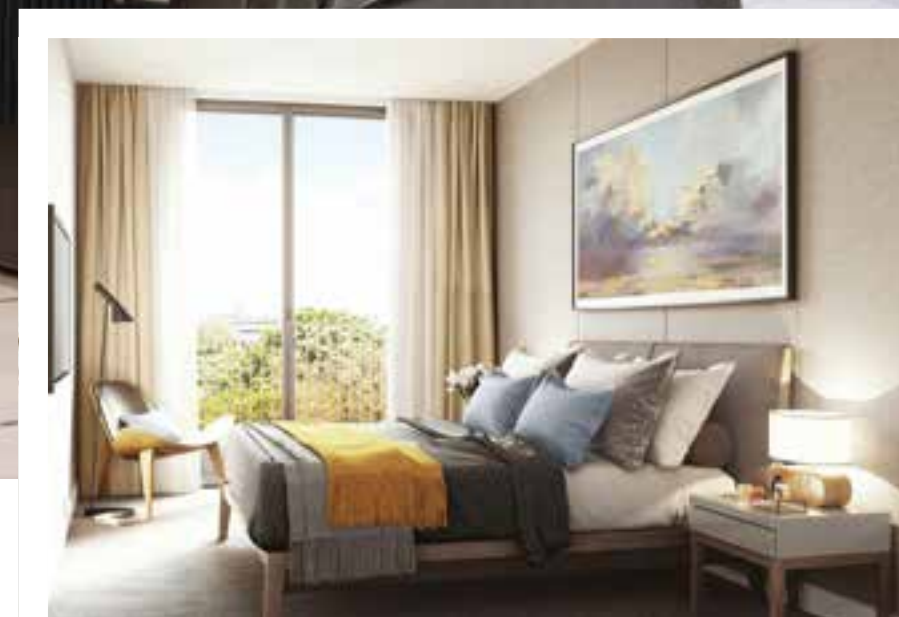
The entrance has been designed to immediately offer respite from the outside world. Backing on to the lush green trees of Fortune Street Park, a 24-hour concierge is there to greet you as you retreat into the privacy of your apartment.



Inspiring interiors

The beginning and end of every day is spent in the bedroom, so we've designed it to be as comfortable and practical as possible. Floor-to-ceiling windows let in the morning light and spacious wardrobes have been fitted to ensure a calm, clean space to rest.

Each bathroom or ensuite is fitted with a fixed shower and bath, perfect to revitalise in the morning or unwind after a long day.





Regardless of its position in the building, each main room has been designed to let light flood into its open plan space during the long summer days, whilst underfloor heating will keep you warm during the winter months.

Kitchen workspace is aplenty with stone worktops and integrated appliances for whipping up culinary delights.

The specification

We've considered everything, from the feel of each surface, to the ambiance of each room. Every detail has been expressed, with only high-quality furnishings used.



Computer generated images are indicative only



Kitchen

- Bespoke kitchen with stone worktop and tiled splashback
- Siemens stainless steel oven
- Siemens induction hob
- Siemens microwave oven
- Siemens integrated fridge/freezer
- Siemens integrated dishwasher
- Siemens freestanding washer/dryer (provided in cupboard)
- Penthouse includes all Miele appliances and Miele wine cooler

Joinery

- Veneered interior doors
- Designer door furniture

Wall and floor finishes

- Engineered hardwood flooring to hallway, kitchen/living/dining area
- Carpet to all bedrooms
- High quality porcelain floor and wall tiles to bathroom and en suite
- Painted walls and ceilings

Bathroom & ensuites

- Duravit sanitaryware
- Kaldewei bath and shower
- Hansgrohe fixed showerhead, adjustable shower head and riser rail to walk-in shower
- Glass shower and bath screen
- Wall-hung mirrored vanity unit
- Shaver socket

Bedrooms

- Fitted wardrobe to the master bedroom with sliding or hinged doors, automatic lighting and bespoke drawer set

Balconies and terraces

- Decking to balcony or terrace

Electrical and lighting

- Downlights throughout
- Antique bronze finish switch plates
- 5amp sockets
- BT points to all principal living areas and master bedroom
- Hyperoptic broadband connection instantly available (purchaser subscription required)
- TV points to all principal living areas and master bedroom
- Communal satellite dish (purchaser subscription required)
- Communal TV aerial

Mechanical systems

- Comfort cooling to living area and master bedroom
- Underfloor heating throughout

Security

- Video door entry system
- Electronic controlled access to building entrance doors and courtyard doors

Residents' amenities

- Concierge
- Residents' lounge and terrace
- Cinema room
- Games room
- Cycle store



These details are intended to give a general indication of the proposed specification. The developer operates a policy of continuous product development and reserves the right to alter any part of the development specification at any time. Where brands are specified the developer reserves the right to replace the brand with another of equal quality or better.

Floorplan directory

Lower Ground

Apartment No.	No. of Bedrooms	Page No.
1	1	69
2	1	69
3	2	69
4	1	69
5	1	69
6	1	69
7	1	69

Ground

Apartment No.	No. of Bedrooms	Page No.
8	1	71
9	1	71
10	1	71
11	2	71
12	1	71
13	1	71
14	1	71
15	1	71
16	2	71

First

Apartment No.	No. of Bedrooms	Page No.
17	2	73
18	2	73
19	1	73
20	1	73
21	1	73
49	1	73
50	1	73
51	2	73
52	2	73
53	2	52
54	2	53
55	2	54
56	1	55
57	2	73

Fifth

Apartment No.	No. of Bedrooms	Page No.
37	2	81
38	2	81
39	1	81
40	1	81
41	1	81
75	1	81
76	1	81
77	2	81
78	2	81
79	2	61
80	2	62
81	2	63
82	2	64
83	3	65

Sixth

Apartment No.	No. of Bedrooms	Page No.
42	3	83
43	1	83
44	1	83
45	1	83
79	2	61
80	2	62
81	2	63
82	2	64
84	1	83
85	1	83
86	2	83
87	3	83

Seventh

Apartment No.	No. of Bedrooms	Page No.
46	3	85
47	1	85
48	1	85
88	1	85
89	1	85
90	2	85
91	2	85
92	1	85
93	3	85

Second

Apartment No.	No. of Bedrooms	Page No.
22	2	75
23	2	75
24	1	75
25	1	75
26	1	75
53	2	52
54	2	53
55	2	54
56	1	55
58	1	75
59	1	75
60	2	75
61	3	75
70	3	60

Third

Apartment No.	No. of Bedrooms	Page No.
27	2	75
28	2	75
29	1	75
30	1	75
31	1	75
62	1	75
63	1	75
64	2	75
65	2	75
66	2	56
67	2	57
68	2	58
69	1	59
70	3	60

Fourth

Apartment No.	No. of Bedrooms	Page No.
32	2	79
33	2	79
34	1	79
35	1	79
36	1	79
66	2	56
67	2	57
68	2	58
69	1	59
71	1	79
72	1	79
73	2	79
74	3	79
83	2	65

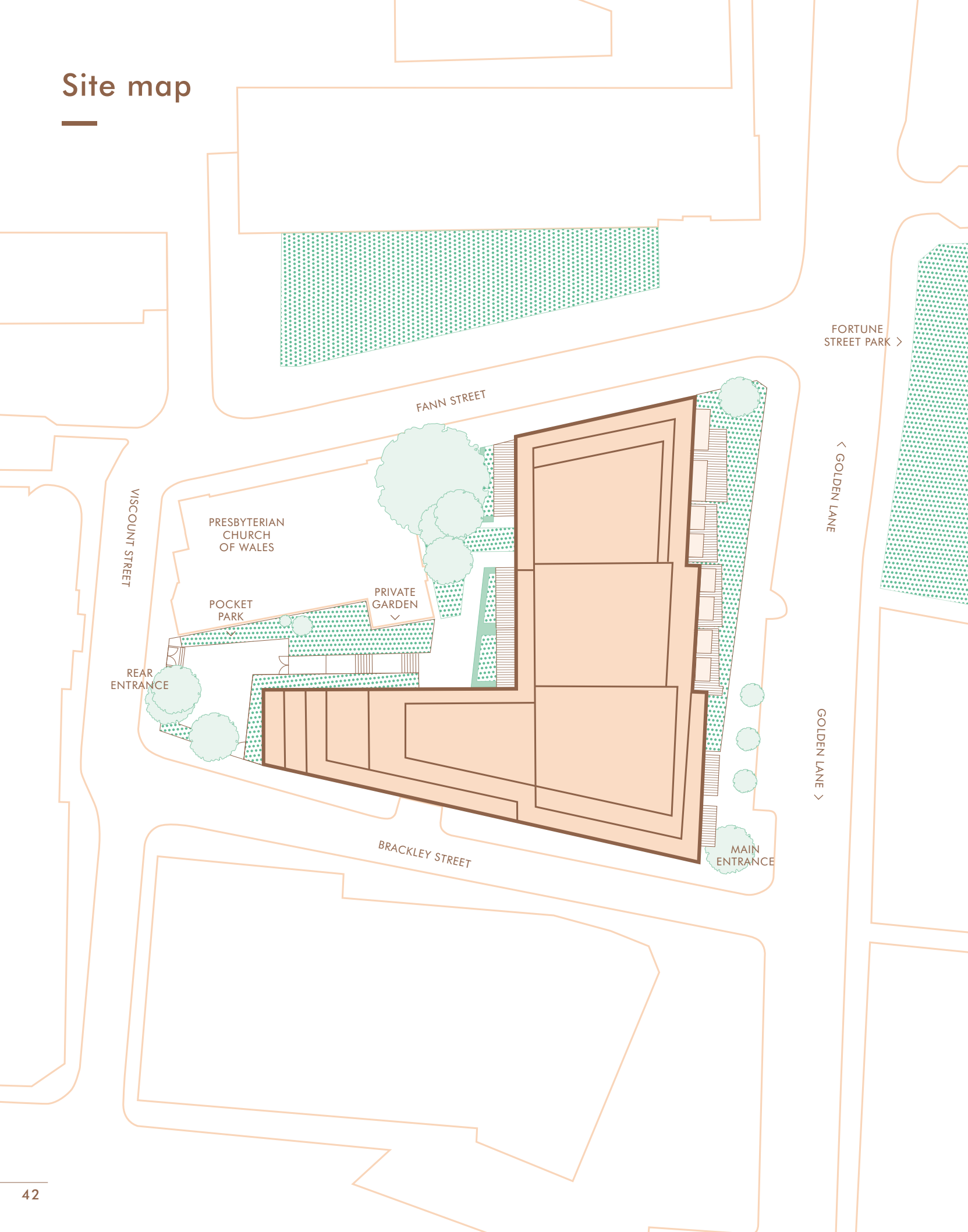
Eighth

Apartment No.	No. of Bedrooms	Page No.
94	2	87
95	2	87
96	1	87
97	3	87
98	2	87

Ninth

Apartment No.	No. of Bedrooms	Page No.
99	3	89

Site map



The Denizen Floorplans

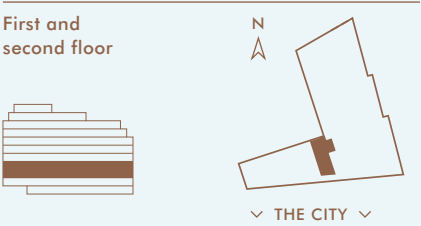
Duplex apartments

Apartment 53
— 2 bedroom

Total Internal Area	114.0m²	1227ft²
Total External Area	5.7m²	61.4ft²

First floor		
Living/Dining	4.89 x 4.80	16'0" x 15'9"
Kitchen	2.97 x 2.47	9'8" x 8'1"

Second floor		
Master Bedroom	4.02 x 3.81	13'2" x 12'6"
Bedroom one	4.29 x 4.35	14'1" x 14'3"
Balcony	4.43 x 1.59	14'6" x 5'2"



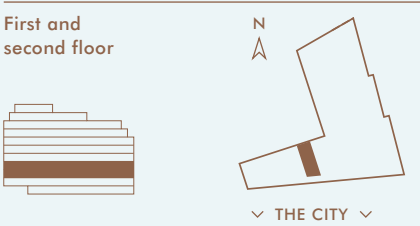
Apartment layouts provide approximate measurements only. Dimensions are for guidance only and all measurements and areas may vary within a tolerance of 5%.

Apartment 54
— 2 bedroom

Total Internal Area	86.5m²	931ft²
Total External Area	5.8m²	62.4ft²

First floor		
Living/Dining	4.19 x 4.80	13'9" x 15'9"
Kitchen	1.75 x 3.77	5'9" x 12'4"

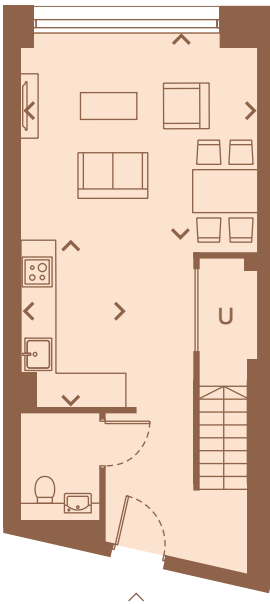
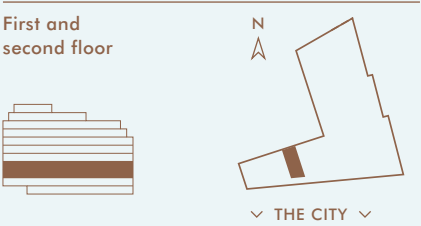
Second floor		
Master Bedroom	4.38 x 3.86	14'4" x 12'7"
Bedroom one	4.19 x 3.15	13'9" x 10'4"
Balcony	4.52 x 1.44	14'9" x 4'8"



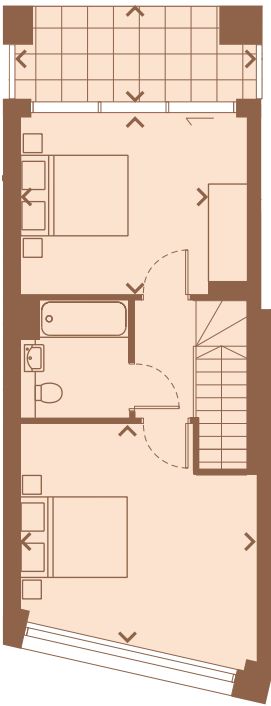
Apartment layouts provide approximate measurements only. Dimensions are for guidance only and all measurements and areas may vary within a tolerance of 5%.

Apartment 55
— 2 bedroom

Total Internal Area	78.8m²	848ft²
Total External Area	5.8m²	62.4ft²
First floor		
Living/Dining	4.38 x 3.80	14'4" x 12'5"
Kitchen	1.94 x 3.08	6'4" x 10'1"
Second floor		
Master Bedroom	3.50 x 3.30	11'5" x 10'10"
Bedroom one	4.44 x 4.38	14'7" x 14'4"
Terrace	4.52 x 1.55	14'9" x 5'1"



First floor

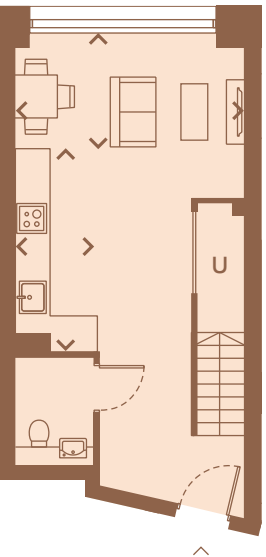
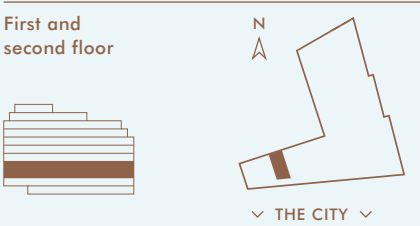


Second floor

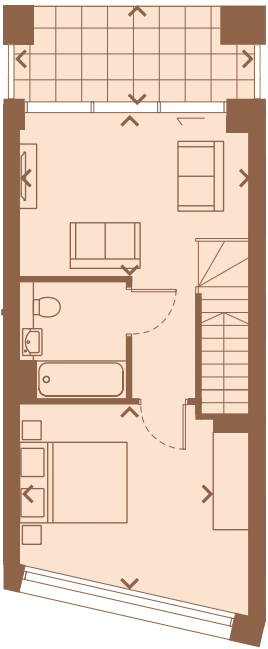
Apartment layouts provide approximate measurements only. Dimensions are for guidance only and all measurements and areas may vary within a tolerance of 5%.

Apartment 56
— 1 bedroom

Total Internal Area	69.2m²	745ft²
Total External Area	5.8m²	62.4ft²
First floor		
Living/Dining	4.27 x 2.09	14'0" x 6'10"
Kitchen	1.50 x 3.75	4'11" x 12'3"
Second floor		
Living	4.29 x 2.94	14'1" x 9'7"
Master Bedroom	3.60 x 3.46	11'9" x 11'4"
Terrace	4.62 x 1.55	15'2" x 5'1"



First floor



Second floor

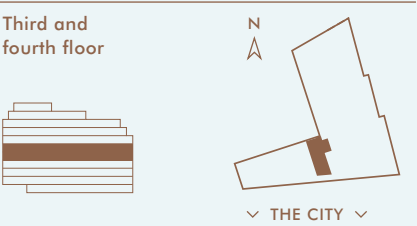
Apartment layouts provide approximate measurements only. Dimensions are for guidance only and all measurements and areas may vary within a tolerance of 5%.

Apartment 66
— 2 bedroom

Total Internal Area	114.0m²	1227ft²
Total External Area	5.7m²	61.4ft²

Third floor		
Living/Dining	4.89 x 4.80	16'0" x 15'9"
Kitchen	2.97 x 2.47	9'8" x 8'1"

Fourth floor		
Master Bedroom	4.02 x 3.81	13'2" x 12'6"
Bedroom one	4.29 x 4.35	14'1" x 14'3"
Balcony	4.43 x 1.59	14'6" x 5'2"



Third floor

Fourth floor

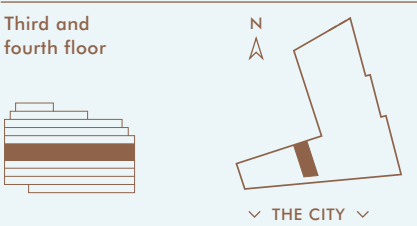
Apartment layouts provide approximate measurements only. Dimensions are for guidance only and all measurements and areas may vary within a tolerance of 5%.

Apartment 67
— 2 bedroom

Total Internal Area	86.5m²	931ft²
Total External Area	5.8m²	62.4ft²

Third floor		
Living/Dining	4.19 x 4.80	13'9" x 15'9"
Kitchen	1.75 x 3.77	5'9" x 12'4"

Fourth floor		
Master Bedroom	4.38 x 3.86	14'4" x 12'7"
Bedroom one	4.19 x 3.15	13'9" x 10'4"
Balcony	4.52 x 1.44	14'9" x 4'8"



Third floor

Fourth floor

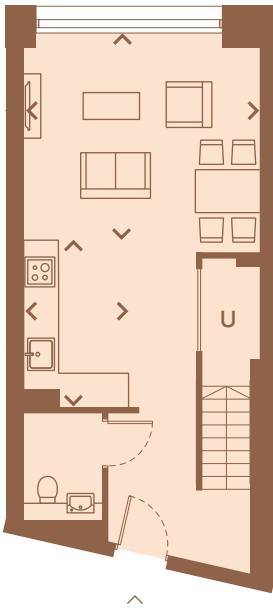
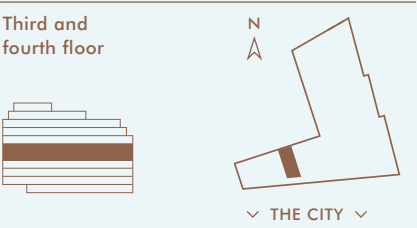
Apartment layouts provide approximate measurements only. Dimensions are for guidance only and all measurements and areas may vary within a tolerance of 5%.

Apartment 68
— 2 bedroom

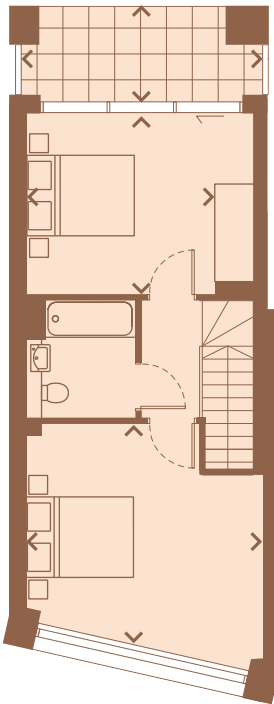
Total Internal Area	78.8m²	848ft²
Total External Area	5.8m²	62.4ft²

Third floor		
Living/Dining	4.38 x 3.80	14'4" x 12'5"
Kitchen	1.94 x 3.08	6'4" x 10'1"

Fourth floor		
Master Bedroom	3.50 x 3.30	11'5" x 10'10"
Bedroom one	4.44 x 4.38	14'7" x 14'4"
Terrace	4.52 x 1.55	14'9" x 5'1"



Third floor



Fourth floor

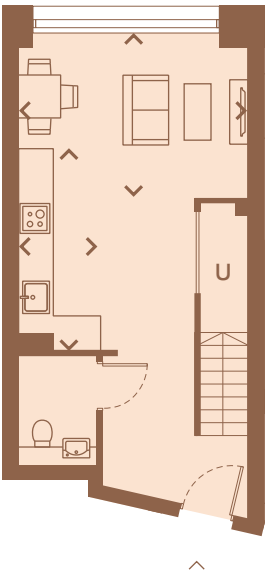
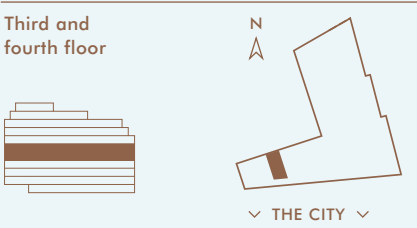
Apartment layouts provide approximate measurements only. Dimensions are for guidance only and all measurements and areas may vary within a tolerance of 5%.

Apartment 69
— 1 bedroom

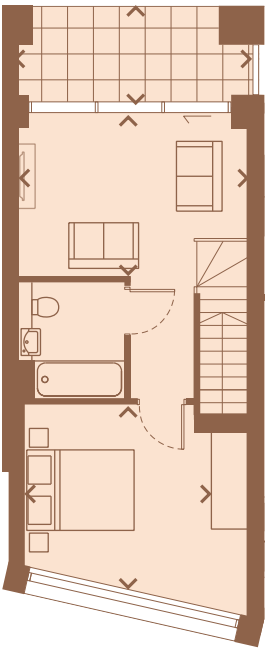
Total Internal Area	69.2m²	745ft²
Total External Area	5.8m²	62.4ft²

Third floor		
Living/Dining	4.27 x 2.09	14'0" x 6'10"
Kitchen	1.50 x 3.75	4'11" x 12'3"

Fourth floor		
Living	4.29 x 2.94	14'1" x 9'7"
Master Bedroom	3.60 x 3.46	11'9" x 11'4"
Terrace	4.62 x 1.55	15'2" x 5'1"



Third floor

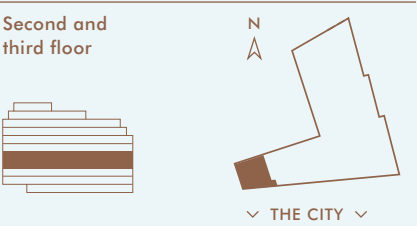


Fourth floor

Apartment layouts provide approximate measurements only. Dimensions are for guidance only and all measurements and areas may vary within a tolerance of 5%.

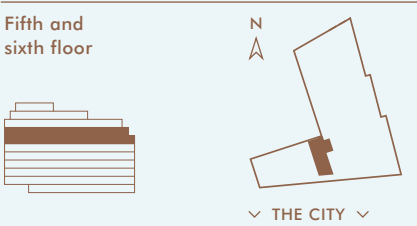
Apartment 70
— 3 bedroom

Total Internal Area	138.8m²	1494ft²
Total External Area	10.6m²	114.1ft²
Second floor		
Master Bedroom	4.43 x 2.72	14'6" x 8'11"
Terrace	3.98 x 1.45	13'0" x 4'9"
Bedroom one	3.73 x 2.92	12'2" x 9'6"
Bedroom two	4.13 x 3.12	13'6" x 10'2"
Third floor		
Living/Dining	4.38 x 8.23	14'4" x 27'0"
Kitchen	4.28 x 2.56	14'0" x 8'4"
Terrace	4.07 x 1.53	13'4" x 5'0"



Apartment 79
— 2 bedroom

Total Internal Area	112.4m²	1210ft²
Total External Area	7.1m²	76.4ft²
Fifth floor		
Living/Dining	6.98 x 4.83	22'11" x 15'10"
Kitchen	2.97 x 2.47	9'8" x 8'1"
Sixth floor		
Master Bedroom	4.46 x 3.75	14'7" x 12'3"
Bedroom one	3.07 x 5.25	10'1" x 17'2"
Terrace	4.85 x 1.72	15'10" x 5'7"



Apartment layouts provide approximate measurements only. Dimensions are for guidance only and all measurements and areas may vary within a tolerance of 5%.

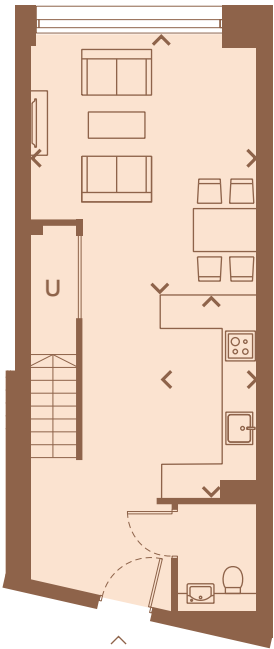
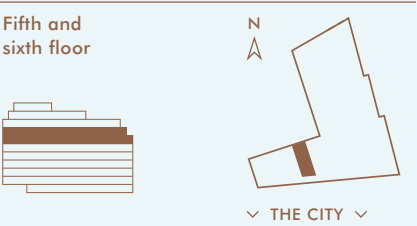
Apartment layouts provide approximate measurements only. Dimensions are for guidance only and all measurements and areas may vary within a tolerance of 5%.

Apartment 80
— 2 bedroom

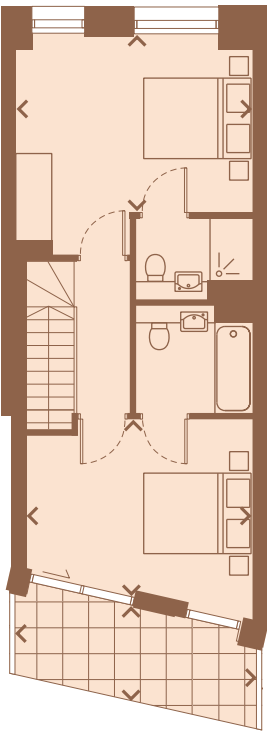
Total Internal Area	84.4m ²	908ft ²
Total External Area	66.0m ²	71ft ²

Fifth floor			
Living/Dining	4.19 x 4.77	13'9" x 15'7"	
Kitchen	1.75 x 3.77	5'9" x 12'4"	

Sixth floor			
Master Bedroom	4.38 x 3.25	14'4" x 10'8"	
Bedroom one	4.19 x 3.23	13'9" x 10'7"	
Terrace	4.65 x 1.76	15'3" x 5'9"	



Fifth floor



Sixth floor

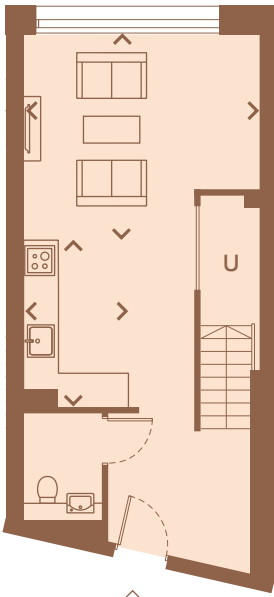
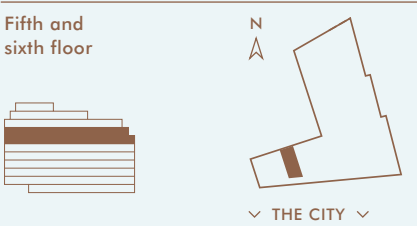
Apartment layouts provide approximate measurements only. Dimensions are for guidance only and all measurements and areas may vary within a tolerance of 5%.

Apartment 81
— 2 bedroom

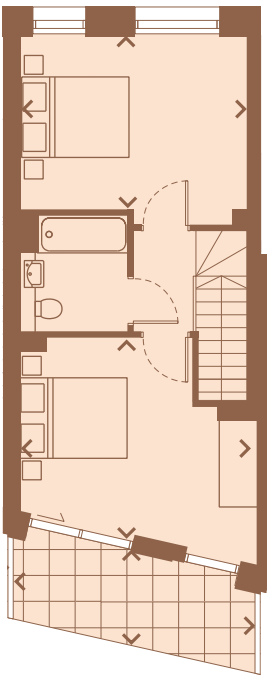
Total Internal Area	77.1m ²	830ft ²
Total External Area	6.9m ²	74.3ft ²

Fifth floor			
Living/Dining	4.38 x 3.10	14'4" x 10'2"	
Kitchen	1.94 x 3.10	6'4" x 10'2"	

Sixth floor			
Master Bedroom	3.69 x 3.71	12'1" x 12'2"	
Bedroom one	3.20 x 4.19	10'6" x 13'9"	
Terrace	4.65 x 1.76	15'3" x 5'9"	



Fifth floor



Sixth floor

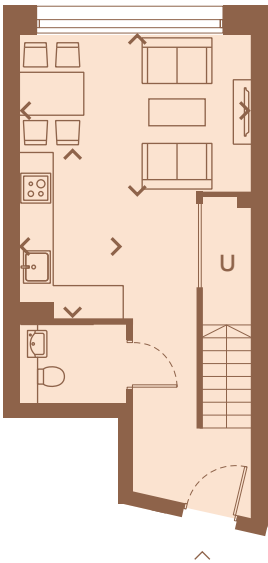
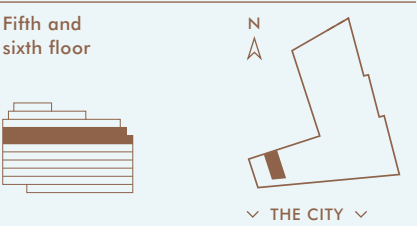
Apartment layouts provide approximate measurements only. Dimensions are for guidance only and all measurements and areas may vary within a tolerance of 5%.

Apartment 82
— 2 bedroom

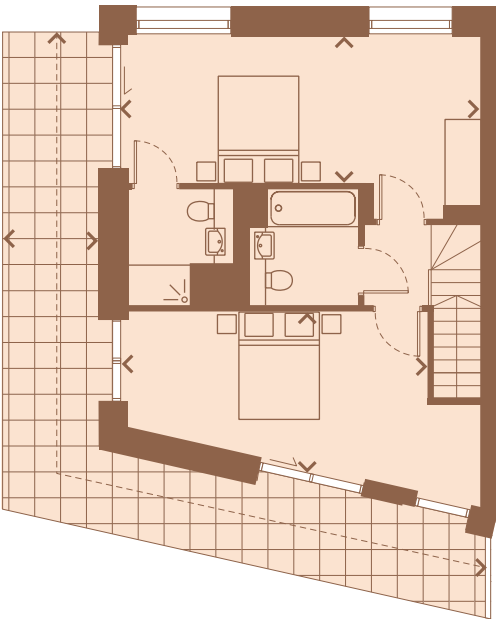
Total Internal Area	81.9m²	882ft²
Total External Area	25.9m²	278.8ft²

Fifth floor			
Living/Dining	4.29 x 2.16	14'1" x 7'1"	
Kitchen	1.94 x 3.10	6'4" x 10'2"	

Sixth floor			
Master Bedroom	6.56 x 2.72	21'6" x 8'11"	
Bedroom one	5.56 x 2.69	18'3" x 8'10"	
Terrace	1.87 x 16.28	6'1" x 53'5"	



Fifth floor



Sixth floor

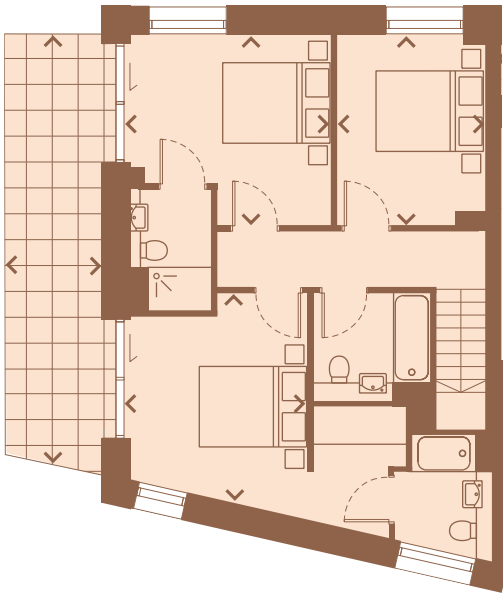
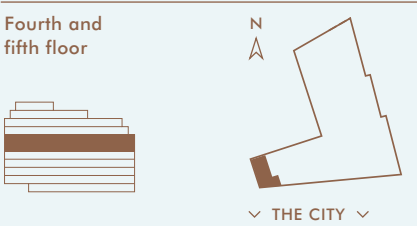
Apartment layouts provide approximate measurements only. Dimensions are for guidance only and all measurements and areas may vary within a tolerance of 5%.

Apartment 83
— 3 bedroom

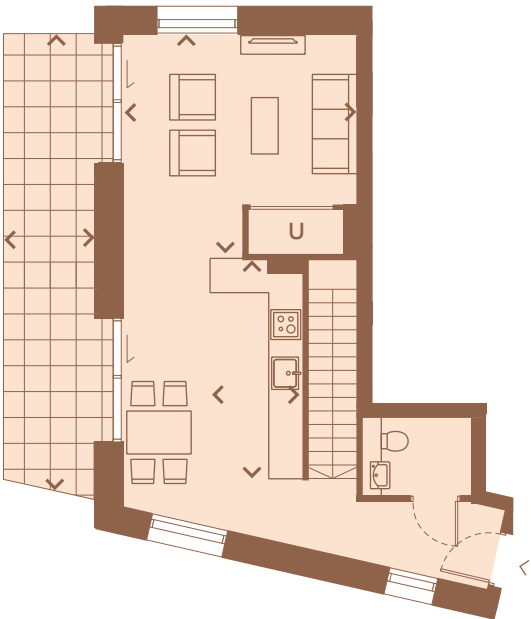
Total Internal Area	100.0m²	1076ft²
Total External Area	27.4m²	294.9ft²

Fourth floor			
Master Bedroom	3.30 x 3.85	10'9" x 12'7"	
Bedroom one	3.73 x 3.53	12'2" x 11'7"	
Bedroom two	2.72 x 3.53	8'11" x 11'7"	
Terrace	1.77 x 7.98	5'9" x 26'2"	

Fifth floor			
Living/Dining	4.32 x 8.87	14'2" x 29'1"	
Kitchen	1.75 x 3.70	5'8" x 12'1"	
Terrace	1.70 x 8.44	5'6" x 27'8"	



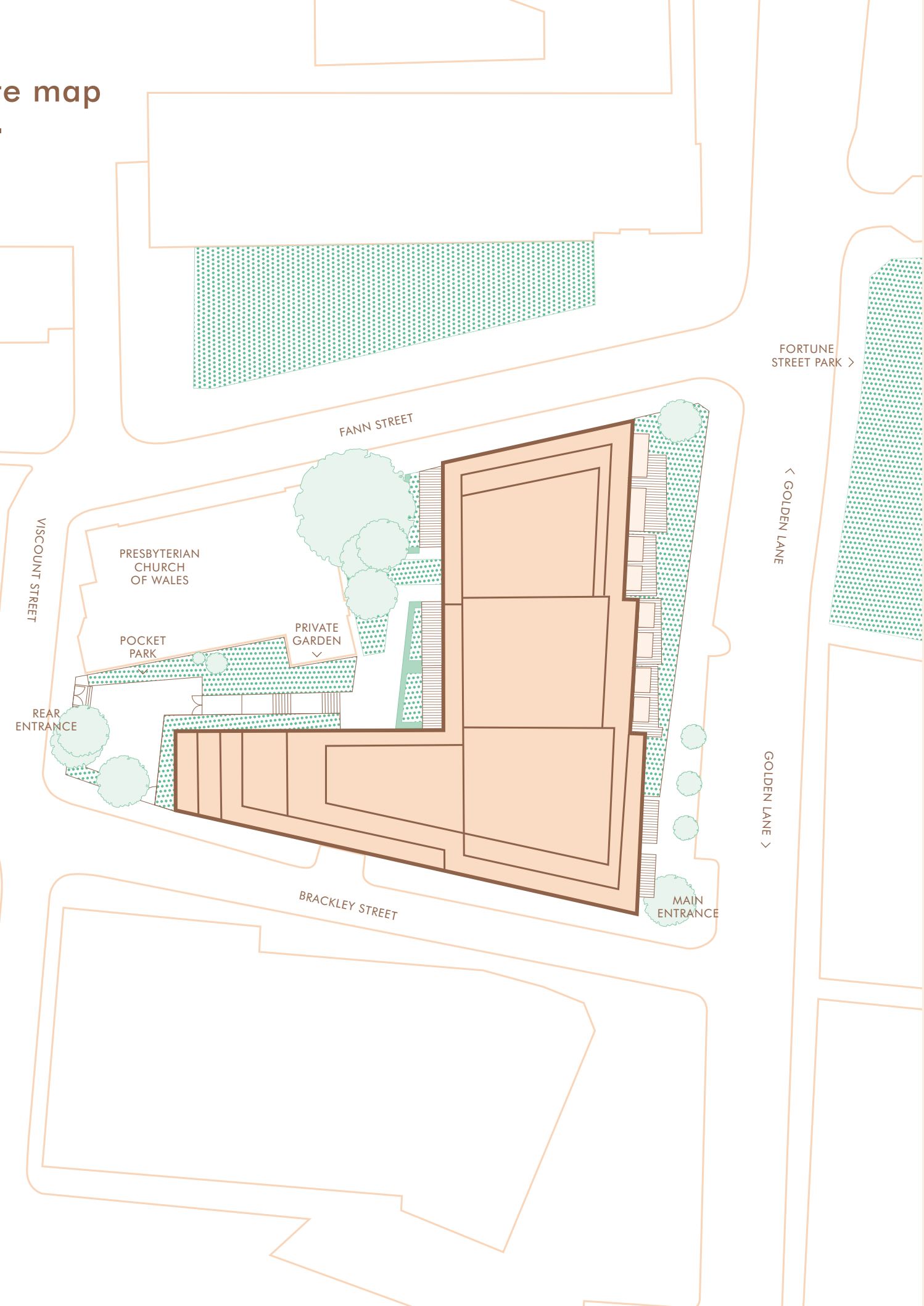
Fourth floor



Fifth floor

Apartment layouts provide approximate measurements only. Dimensions are for guidance only and all measurements and areas may vary within a tolerance of 5%.

Site map



The Denizen Floorplans

Apartments



Lower ground floor

Apartment 01 — 1 bedroom

Total Internal Area	59.8m²	644ft²
Total External Area	10.5m²	113ft²
Living/Dining	4.46 x 3.28	14'7" x 10'9"
Kitchen	4.02 x 1.62	13'2" x 5'3"
Master Bedroom	5.16 x 4.98	16'11" x 16'4"
Terrace	1.98 x 5.65	6'5" x 18'6"

Apartment 04 — 1 bedroom

Total Internal Area	49.5m²	533ft²
Total External Area	10.0m²	107ft²
Living/Dining	4.44 x 3.49	14'7" x 11'5"
Kitchen	3.35 x 1.94	10'11" x 6'4"
Master Bedroom	3.61 x 2.87	11'10" x 9'5"
Terrace	1.97 x 6.20	6'5" x 20'4"

Apartment 07* — 1 bedroom

Total Internal Area	61.4m²	661ft²
Total External Area	7.0m²	75.3ft²
Living/Dining	5.51 x 3.41	18'0" x 11'2"
Kitchen	4.16 x 1.91	13'7" x 6'3"
Master Bedroom	5.55 x 3.03	18'2" x 9'11"
Terrace	1.25 x 6.61	4'1" x 21'8"

Apartment 02 — 1 bedroom

Total Internal Area	52.9m²	569ft²
Total External Area	12.0m²	129.2ft²
Living/Dining	4.46 x 3.51	14'7" x 11'6"
Kitchen	4.02 x 1.62	13'2" x 5'3"
Master Bedroom	5.18 x 2.77	17'0" x 9'1"
Terrace	1.98 x 6.41	6'5" x 21'0"

Apartment 05* — 1 bedroom

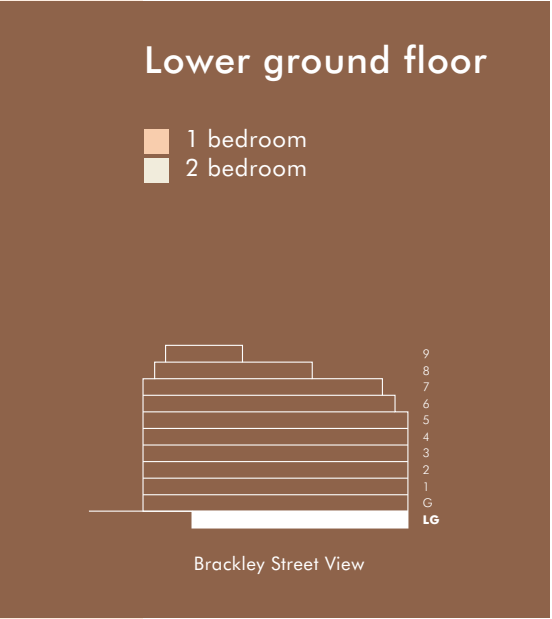
Total Internal Area	57.1m²	615ft²
Total External Area	16.0m²	172.2ft²
Living/Dining	4.38 x 3.30	14'4" x 10'9"
Kitchen	4.35 x 1.80	14'3" x 5'10"
Master Bedroom	4.92 x 3.10	16'1" x 10'2"
Terrace	2.75 x 6.69	9'0" x 21'11"

Apartment 03 — 2 bedroom

Total Internal Area	79.0m²	850ft²
Total External Area	13.0m²	139.9ft²
Living/Dining	5.77 x 4.25	18'11" x 13'11"
Kitchen	2.00 x 4.02	6'6" x 13'2"
Master Bedroom	4.49 x 1.97	14'8" x 6'5"
Bedroom one	3.38 x 3.09	11'1" x 10'1"
Terrace	1.97 x 7.67	6'5" x 25'2"

Apartment 06 — 1 bedroom

Total Internal Area	54.2m²	583ft²
Total External Area	14.0m²	150.7ft²
Living/Dining	4.35 x 3.59	14'3" x 11'9"
Kitchen	4.00 x 1.95	13'1" x 6'4"
Master Bedroom	4.57 x 2.77	14'11" x 9'1"
Terrace	2.59 x 6.18	8'5" x 20'3"



*Wheelchair accessible dwellings

Apartment layouts provide approximate measurements only. Dimensions are for guidance only and all measurements and areas may vary within a tolerance of 5%.

Ground floor

Apartment 08 — 1 bedroom

Total Internal Area	59.8m²	644ft²
Living/Dining	4.46 x 3.28	14'7" x 10'9"
Kitchen	4.02 x 1.62	13'2" x 5'3"
Master Bedroom	5.16 x 4.98	16'11" x 16'4"

Apartment 11 — 2 bedroom

Total Internal Area	76.1m²	819ft²
Total External Area	6.5m²	70ft²
Living/Dining	4.39 x 4.86	14'5" x 15'11"
Kitchen	1.92 x 3.20	6'3" x 10'6"
Master Bedroom	5.83 x 2.32	19'1" x 7'7"
Bedroom one	3.47 x 3.09	11'4" x 10'1"
Terrace	1.44 x 4.33	4'8" x 14'2"

Apartment 14 — 1 bedroom

Total Internal Area	49.4m²	532ft²
Total External Area	4.2m²	45.2ft²
Living/Dining	3.62 x 3.32	11'10" x 10'10"
Kitchen	3.35 x 1.94	10'11" x 6'4"
Master Bedroom	4.32 x 3.05	14'2" x 10'0"
Terrace	1.65 x 3.24	5'5" x 10'7"

Apartment 09 — 1 bedroom

Total Internal Area	53.0m²	570ft²
Living/Dining	4.46 x 3.47	14'7" x 11'4"
Kitchen	4.02 x 1.62	13'2" x 5'3"
Master Bedroom	4.47 x 2.81	14'8" x 9'2"

Apartment 12 — 1 bedroom

Total Internal Area	44.2m²	476ft²
Total External Area	4.2m²	45.2ft²
Living/Dining	2.82 x 3.59	9'3" x 11'9"
Kitchen	3.35 x 1.94	10'11" x 6'4"
Master Bedroom	3.85 x 2.74	12'7" x 9'0"
Terrace	1.41 x 3.14	4'7" x 10'3"

Apartment 15 — 1 bedroom

Total Internal Area	56.5m²	608ft²
Total External Area	4.4m²	47.4ft²
Living/Dining	3.91 x 3.43	12'10" x 11'3"
Kitchen	4.00 x 1.95	13'1" x 6'4"
Master Bedroom	5.47 x 2.97	17'11" x 9'9"
Terrace	1.65 x 2.77	5'4" x 9'1"

Apartment 10 — 1 bedroom

Total Internal Area	61.6m²	663ft²
Total External Area	11.6m²	124.9ft²
Living/Dining	4.51 x 5.03	14'9" x 16'6"
Kitchen	3.70 x 1.94	12'1" x 6'4"
Master Bedroom	3.87 x 3.23	12'8" x 10'7"
Balcony	2.34 x 4.96	7'8" x 16'3"

Apartment 13 — 1 bedroom

Total Internal Area	52.2m²	562ft²
Total External Area	4.2m²	45.2ft²
Living/Dining	3.33 x 3.34	10'11" x 10'11"
Kitchen	4.00 x 1.95	13'1" x 6'4"
Master Bedroom	4.74 x 3.05	15'6" x 10'0"
Terrace	1.70 x 2.97	5'6" x 9'8"

Apartment 16 — 2 bedroom

Total Internal Area	69.5m²	748ft²
Total External Area	4.8m²	51.7ft²
Living/Dining	4.41 x 3.75	14'5" x 12'3"
Kitchen	1.76 x 4.16	5'9" x 13'7"
Master Bedroom	3.84 x 2.72	12'7" x 8'11"
Bedroom one	4.32 x 2.95	14'2" x 9'8"
Terrace	3.44 x 1.62	11'3" x 5'3"

Apartment layouts provide approximate measurements only. Dimensions are for guidance only and all measurements and areas may vary within a tolerance of 5%.



First floor

Apartment 17* — 2 bedroom

Total Internal Area	77.0m²	829ft²
Total External Area	11.6m²	124.9ft²
Living/Dining	3.71 x 4.41	12'2" x 14'5"
Kitchen	3.67 x 2.45	12'0" x 8'0"
Master Bedroom	3.87 x 4.50	12'8" x 14'9"
Bedroom one	2.69 x 3.74	8'9" x 12'3"
Balcony	2.34 x 4.96	7'8" x 16'3"

Apartment 20 — 1 bedroom

Total Internal Area	56.8m²	611ft²
Total External Area	3.6m²	38.8ft²
Living/Dining	5.28 x 3.62	17'4" x 11'10"
Kitchen	3.40 x 2.03	11'2" x 6'7"
Master Bedroom	4.80 x 2.77	15'9" x 9'1"
Balcony	1.62 x 2.27	5'3" x 7'5"

Apartment 50 — 1 bedroom

Total Internal Area	54.5m²	587ft²
Total External Area	3.6m²	38.8ft²
Living/Dining	4.35 x 3.59	14'3" x 11'9"
Kitchen	4.00 x 1.95	13'1" x 6'4"
Master Bedroom	4.56 x 2.77	14'11" x 9'1"
Balcony	1.62 x 2.27	5'3" x 7'5"

Apartment 57 — 2 bedroom

Total Internal Area	72.0m²	775ft²
Total External Area	5.2m²	56ft²
Living/Dining	3.98 x 7.50	13'0" x 24'7"
Kitchen	1.50 x 3.75	4'11" x 12'3"
Master Bedroom	4.10 x 3.03	13'5" x 9'11"
Bedroom one	4.50 x 2.72	14'9" x 8'11"
Terrace	3.61 x 1.61	11'10" x 5'3"

Apartment 18 — 2 bedroom

Total Internal Area	83.0m²	893ft²
Total External Area	6.6m²	71ft²
Living/Dining	4.37 x 5.79	14'4" x 18'11"
Kitchen	3.57 x 1.62	11'8" x 5'3"
Master Bedroom	2.86 x 4.19	9'4" x 13'8"
Bedroom one	3.40 x 3.37	11'2" x 11'0"
Balcony	1.64 x 4.15	5'4" x 13'7"

Apartment 21 — 1 bedroom

Total Internal Area	57.3m²	617ft²
Living/Dining	4.92 x 3.51	16'1" x 11'6"
Kitchen	3.73 x 1.73	12'3" x 5'8"
Master Bedroom	4.49 x 2.77	14'9" x 9'1"

Apartment 51 — 2 bedroom

Total Internal Area	106.5m²	1146ft²
Total External Area	3.6m²	38.8ft²
Living/Dining	6.53 x 5.38	21'5" x 17'7"
Kitchen	2.62 x 4.45	8'7" x 14'7"
Master Bedroom	4.41 x 3.10	14'5" x 10'2"
Bedroom one	5.03 x 2.82	16'6" x 9'3"
Balcony	1.62 x 2.27	5'3" x 7'5"

Apartment 19 — 1 bedroom

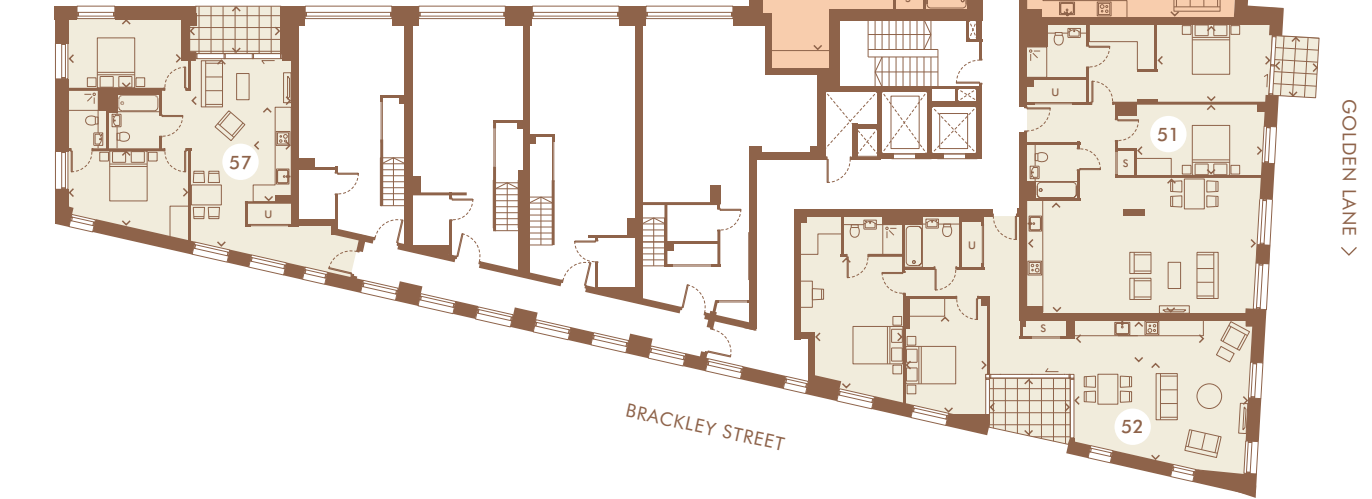
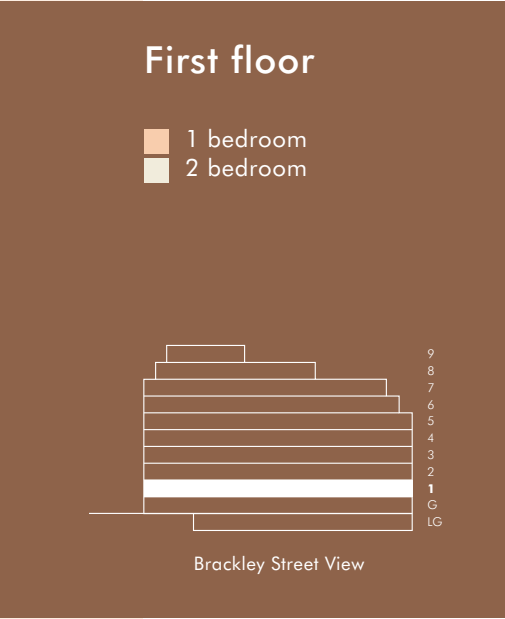
Total Internal Area	49.3m²	531ft²
Total External Area	3.6m²	38.8ft²
Living/Dining	4.53 x 3.46	14'10" x 11'4"
Kitchen	3.35 x 1.94	10'11" x 6'4"
Master Bedroom	3.61 x 2.87	11'10" x 9'5"
Balcony	1.64 x 2.24	5'4" x 7'4"

Apartment 49 — 1 bedroom

Total Internal Area	62.3m²	671ft²
Living/Dining	4.92 x 3.28	16'1" x 10'9"
Kitchen	3.73 x 1.73	12'3" x 5'8"
Master Bedroom	5.18 x 4.43	17'0" x 14'6"

Apartment 52 — 2 bedroom

Total Internal Area	103.7m²	1116ft²
Total External Area	7.0m²	75.3ft²
Living/Dining	6.91 x 3.80	22'8" x 12'5"
Kitchen	5.13 x 1.62	16'9" x 5'3"
Master Bedroom	4.08 x 5.22	13'4" x 17'1"
Bedroom one	3.27 x 4.51	10'8" x 14'9"
Terrace	3.17 x 2.17	10'5" x 7'1"



*Wheelchair accessible dwellings

Apartment layouts provide approximate measurements only. Dimensions are for guidance only and all measurements and areas may vary within a tolerance of 5%.

Second floor

Apartment 22 — 2 bedroom

Total Internal Area	76.5m²	823ft²
Total External Area	11.6m²	124.9ft²
Living/Dining	3.83 x 4.95	12'6" x 16'2"
Kitchen	3.80 x 1.95	12'5" x 6'4"
Master Bedroom	3.03 x 3.30	9'11" x 10'9"
Bedroom one	2.72 x 3.45	8'11" x 11'3"
Balcony	2.34 x 4.96	7'8" x 16'3"

Apartment 25* — 1 bedroom

Total Internal Area	57.0m²	614ft²
Total External Area	3.6m²	38.8ft²
Living/Dining	4.64 x 3.30	15'2" x 10'9"
Kitchen	4.30 x 1.82	14'1" x 5'11"
Master Bedroom	4.85 x 3.10	15'10" x 10'2"
Balcony	1.64 x 2.27	5'4" x 7'5"

Apartment 59 — 1 bedroom

Total Internal Area	54.0m²	581ft²
Total External Area	3.6m²	38.8ft²
Living/Dining	4.43 x 3.59	14'6" x 11'9"
Kitchen	4.09 x 2.00	13'5" x 6'6"
Master Bedroom	4.18 x 2.77	13'8" x 9'1"
Balcony	1.62 x 2.27	5'3" x 7'5"

Apartment 23 — 2 bedroom

Total Internal Area	83.2m²	896ft²
Total External Area	6.6m²	71ft²
Living/Dining	6.17 x 4.86	20'2" x 15'11"
Kitchen	1.60 x 4.30	5'2" x 14'1"
Master Bedroom	5.89 x 2.59	19'3" x 8'6"
Bedroom one	3.47 x 3.09	11'4" x 10'1"
Balcony	1.64 x 4.18	5'4" x 13'8"

Apartment 26 — 1 bedroom

Total Internal Area	57.3m²	617ft²
Living/Dining	4.92 x 3.51	16'1" x 11'6"
Kitchen	3.73 x 1.73	12'3" x 5'8"
Master Bedroom	4.49 x 2.77	14'9" x 9'1"

Apartment 60* — 2 bedroom

Total Internal Area	106.7m²	1149ft²
Total External Area	7.7m²	82.9ft²
Living/Dining	6.91 x 4.77	22'8" x 15'7"
Kitchen	2.50 x 2.99	8'2" x 9'9"
Master Bedroom	4.84 x 3.41	15'10" x 11'2"
Bedroom one	5.32 x 3.12	17'5" x 10'3"
Balcony	1.62 x 4.97	5'3" x 16'3"

Apartment 24 — 1 bedroom

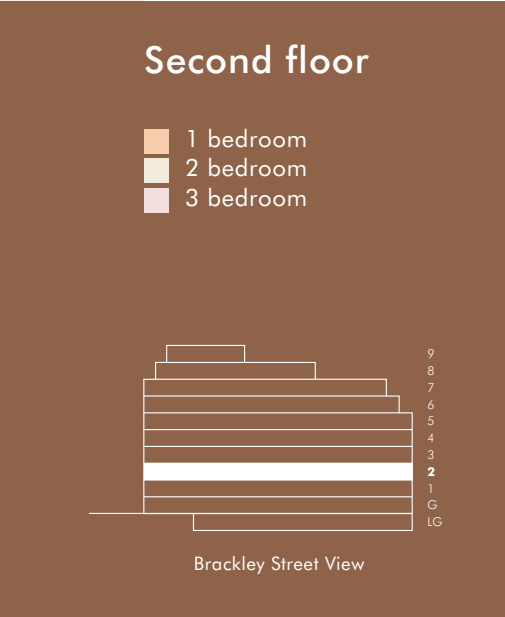
Total Internal Area	49.5m²	533ft²
Total External Area	3.6m²	38.8ft²
Living/Dining	4.27 x 3.59	14'0" x 11'9"
Kitchen	3.35 x 1.94	10'11" x 6'4"
Master Bedroom	3.82 x 2.75	12'6" x 9'0"
Balcony	1.64 x 2.27	5'4" x 7'5"

Apartment 58 — 1 bedroom

Total Internal Area	62.7m²	675ft²
Living/Dining	4.92 x 3.28	16'1" x 10'9"
Kitchen	3.73 x 1.73	12'3" x 5'8"
Master Bedroom	5.16 x 4.32	16'11" x 14'2"

Apartment 61 — 3 bedroom

Total Internal Area	128.8m²	1386ft²
Total External Area	6.3m²	67.8ft²
Living/Dining	10.40 x 5.83	34'1" x 19'1"
Kitchen	4.96 x 1.82	16'3" x 5'11"
Master Bedroom	2.82 x 7.03	9'3" x 23'0"
Bedroom one	3.22 x 5.72	10'6" x 18'9"
Bedroom two	2.87 x 4.09	9'5" x 13'5"
Balcony	1.62 x 4.18	5'3" x 13'8"



*Wheelchair accessible dwellings

Apartment layouts provide approximate measurements only. Dimensions are for guidance only and all measurements and areas may vary within a tolerance of 5%.

Third floor

Apartment 27* — 2 bedroom

Total Internal Area	77.0m²	829ft²
Total External Area	11.6m²	124.9ft²
Living/Dining	3.71 x 4.41	12'2" x 14'5"
Kitchen	3.67 x 2.45	12'0" x 8'0"
Master Bedroom	3.87 x 4.50	12'8" x 14'9"
Bedroom one	2.69 x 3.74	8'9" x 12'3"
Balcony	2.34 x 4.96	7'8" x 16'3"

Apartment 30 — 1 bedroom

Total Internal Area	56.8m²	611ft²
Total External Area	3.6m²	38.8ft²
Living/Dining	5.28 x 3.62	17'4" x 11'10"
Kitchen	3.40 x 2.03	11'2" x 6'7"
Master Bedroom	4.80 x 2.77	15'9" x 9'1"
Balcony	1.62 x 2.27	5'3" x 7'5"

Apartment 63 — 1 bedroom

Total Internal Area	54.5m²	587ft²
Total External Area	3.6m²	38.8ft²
Living/Dining	4.35 x 3.59	14'3" x 11'9"
Kitchen	4.00 x 1.95	13'1" x 6'4"
Master Bedroom	4.56 x 2.77	14'11" x 9'1"
Balcony	1.62 x 2.27	5'3" x 7'5"

Apartment 28 — 2 bedroom

Total Internal Area	83.0m²	893ft²
Total External Area	6.6m²	71ft²
Living/Dining	4.37 x 5.79	14'4" x 18'11"
Kitchen	3.57 x 1.62	11'8" x 5'3"
Master Bedroom	2.86 x 4.19	9'4" x 13'8"
Bedroom one	3.40 x 3.37	11'2" x 11'0"
Balcony	1.64 x 4.15	5'4" x 13'7"

Apartment 31 — 1 bedroom

Total Internal Area	57.3m²	617ft²
Living/Dining	4.92 x 3.51	16'1" x 11'6"
Kitchen	3.73 x 1.73	12'3" x 5'8"
Master Bedroom	4.49 x 2.77	14'9" x 9'1"

Apartment 64 — 2 bedroom

Total Internal Area	106.5m²	1146ft²
Total External Area	9.9m²	106.6ft²
Living/Dining	6.54 x 5.38	21'5" x 17'7"
Kitchen	2.62 x 4.45	8'7" x 14'7"
Master Bedroom	4.41 x 3.10	14'5" x 10'2"
Bedroom one	5.05 x 2.62	16'6" x 8'7"
Balcony one	1.62 x 2.27	5'3" x 7'5"
Balcony two	1.62 x 4.18	5'3" x 13'8"

Apartment 29 — 1 bedroom

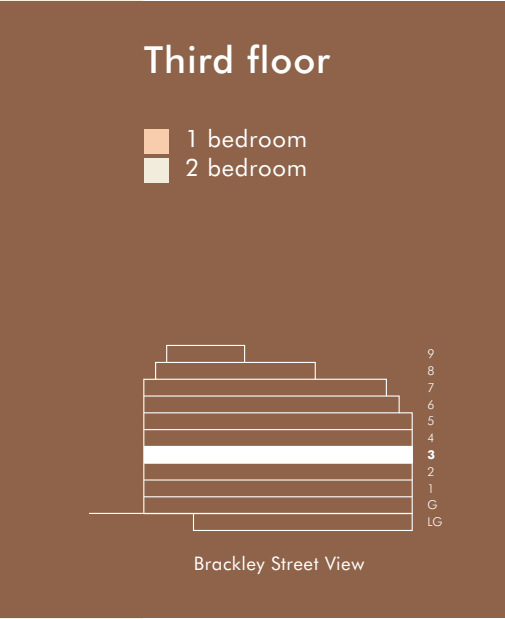
Total Internal Area	49.3m²	531ft²
Total External Area	3.6m²	38.8ft²
Living/Dining	4.53 x 3.46	14'10" x 11'4"
Kitchen	3.35 x 1.94	10'11" x 6'4"
Master Bedroom	3.61 x 2.87	11'10" x 9'5"
Balcony	1.64 x 2.24	5'4" x 7'4"

Apartment 62 — 1 bedroom

Total Internal Area	62.3m²	671ft²
Living/Dining	4.92 x 3.28	16'1" x 10'9"
Kitchen	3.73 x 1.73	12'3" x 5'8"
Master Bedroom	5.18 x 4.43	17'0" x 14'6"

Apartment 65 — 2 bedroom

Total Internal Area	103.7m²	1116ft²
Total External Area	7.0m²	75.3ft²
Living/Dining	6.91 x 3.80	22'8" x 12'5"
Kitchen	5.13 x 1.62	16'9" x 5'3"
Master Bedroom	4.08 x 5.22	13'4" x 17'1"
Bedroom one	3.27 x 4.51	10'8" x 14'9"
Balcony	3.17 x 2.17	10'5" x 7'1"



*Wheelchair accessible dwellings

Apartment layouts provide approximate measurements only. Dimensions are for guidance only and all measurements and areas may vary within a tolerance of 5%.

Fourth floor

Apartment 32 — 2 bedroom

Total Internal Area	59.m²	823ft²
Total External Area	11.6m²	124.9ft²
Living/Dining	3.83 x 4.95	12'6" x 16'2"
Kitchen	3.80 x 1.95	12'5" x 6'4"
Master Bedroom	3.03 x 3.30	9'11" x 10'9"
Bedroom one	2.72 x 3.45	8'11" x 11'3"
Balcony	2.34 x 4.96	7'8" x 16'3"

Apartment 35* — 1 bedroom

Total Internal Area	57.0m²	614ft²
Total External Area	3.6m²	38.8ft²
Living/Dining	4.64 x 3.30	15'2" x 10'9"
Kitchen	4.30 x 1.82	14'1" x 5'11"
Master Bedroom	4.85 x 3.10	15'10" x 10'2"
Balcony	1.64 x 2.27	5'4" x 7'5"

Apartment 72 — 1 bedroom

Total Internal Area	54.0m²	581ft²
Total External Area	3.6m²	38.8ft²
Living/Dining	4.43 x 3.59	14'6" x 11'9"
Kitchen	4.09 x 2.00	13'5" x 6'6"
Master Bedroom	4.18 x 2.77	13'8" x 9'1"
Balcony	1.62 x 2.27	5'3" x 7'5"

Apartment 33 — 2 bedroom

Total Internal Area	83.2m²	896ft²
Total External Area	6.6m²	71ft²
Living/Dining	6.17 x 4.86	20'2" x 15'11"
Kitchen	1.60 x 4.30	5'2" x 14'1"
Master Bedroom	5.89 x 2.59	19'3" x 8'6"
Bedroom one	3.47 x 3.09	11'4" x 10'1"
Balcony	1.64 x 4.18	5'4" x 13'8"

Apartment 36 — 1 bedroom

Total Internal Area	57.3m²	617ft²
Living/Dining	4.92 x 3.51	16'1" x 11'6"
Kitchen	3.73 x 1.73	12'3" x 5'8"
Master Bedroom	4.49 x 2.77	14'9" x 9'1"

Apartment 73* — 2 bedroom

Total Internal Area	106.7m²	1149ft²
Total External Area	7.7m²	82.9ft²
Living/Dining	6.91 x 4.77	22'8" x 15'7"
Kitchen	2.50 x 2.99	8'2" x 9'9"
Master Bedroom	4.84 x 3.41	15'10" x 11'2"
Bedroom one	5.32 x 3.12	17'5" x 10'3"
Balcony	1.62 x 4.97	5'3" x 16'3"

Apartment 34 — 1 bedroom

Total Internal Area	49.5m²	533ft²
Total External Area	3.6m²	38.8ft²
Living/Dining	4.27 x 3.59	14'0" x 11'9"
Kitchen	3.35 x 1.94	10'11" x 6'4"
Master Bedroom	3.82 x 2.75	12'6" x 9'0"
Balcony	1.64 x 2.27	5'4" x 7'5"

Apartment 71 — 1 bedroom

Total Internal Area	62.7m²	675ft²
Living/Dining	4.92 x 3.28	16'1" x 10'9"
Kitchen	3.73 x 1.73	12'3" x 5'8"
Master Bedroom	5.16 x 4.32	16'11" x 14'2"

Apartment 74 — 3 bedroom

Total Internal Area	128.8m²	1386ft²
Total External Area	6.3m²	67.8ft²
Living/Dining	10.40 x 5.83	34'1" x 19'1"
Kitchen	4.96 x 1.82	16'3" x 5'11"
Master Bedroom	2.82 x 7.03	9'3" x 23'0"
Bedroom one	3.22 x 5.72	10'6" x 18'9"
Bedroom two	2.87 x 4.09	9'5" x 13'5"
Balcony	1.62 x 4.18	5'3" x 13'8"



*Wheelchair accessible dwellings

Apartment layouts provide approximate measurements only. Dimensions are for guidance only and all measurements and areas may vary within a tolerance of 5%.

Fifth floor

Apartment 37 — 2 bedroom

Total Internal Area	76.5m²	823ft²
Total External Area	11.6m²	124.9ft²
Living/Dining	3.83 x 4.95	12'6" x 16'2"
Kitchen	3.80 x 1.95	12'5" x 6'4"
Master Bedroom	3.03 x 3.30	9'11" x 10'9"
Bedroom one	2.72 x 3.45	8'11" x 11'3"
Balcony	2.34 x 4.96	7'8" x 16'3"

Apartment 40 — 1 bedroom

Total Internal Area	56.8m²	611ft²
Total External Area	3.6m²	38.8ft²
Living/Dining	5.28 x 3.62	17'4" x 11'10"
Kitchen	3.40 x 2.03	11'2" x 6'7"
Master Bedroom	4.80 x 2.77	15'9" x 9'1"
Balcony	1.62 x 2.27	5'3" x 7'5"

Apartment 76 — 1 bedroom

Total Internal Area	54.5m²	587ft²
Total External Area	3.6m²	38.8ft²
Living/Dining	4.35 x 3.59	14'3" x 11'9"
Kitchen	4.00 x 1.95	13'1" x 6'4"
Master Bedroom	4.56 x 2.77	14'11" x 9'1"
Balcony	1.62 x 2.27	5'3" x 7'5"

Apartment 38 — 2 bedroom

Total Internal Area	83.0m²	893ft²
Total External Area	6.6m²	71ft²
Living/Dining	4.37 x 5.79	14'4" x 18'11"
Kitchen	3.57 x 1.62	11'8" x 5'3"
Master Bedroom	2.86 x 4.19	9'4" x 13'8"
Bedroom one	3.40 x 3.37	11'2" x 11'0"
Balcony	1.64 x 4.15	5'4" x 13'7"

Apartment 41 — 1 bedroom

Total Internal Area	57.3m²	617ft²
Living/Dining	4.92 x 3.51	16'1" x 11'6"
Kitchen	3.73 x 1.73	12'3" x 5'8"
Master Bedroom	4.49 x 2.77	14'9" x 9'1"

Apartment 77 — 2 bedroom

Total Internal Area	106.5m²	1146ft²
Total External Area	9.9m²	106.6ft²
Living/Dining	6.54 x 5.38	21'5" x 17'7"
Kitchen	2.62 x 4.45	8'7" x 14'7"
Master Bedroom	4.41 x 3.10	14'5" x 10'2"
Bedroom one	5.05 x 2.62	16'6" x 8'7"
Balcony one	1.62 x 2.27	5'3" x 7'5"
Balcony two	1.62 x 4.18	5'3" x 13'8"

Apartment 39 — 1 bedroom

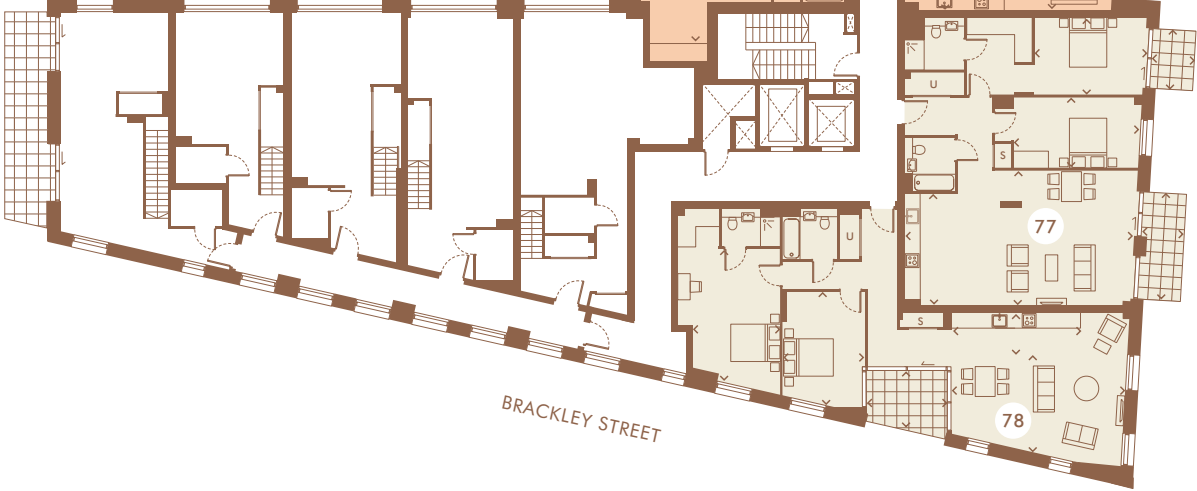
Total Internal Area	49.3m²	531ft²
Total External Area	3.6m²	38.8ft²
Living/Dining	4.53 x 3.46	14'10" x 11'4"
Kitchen	3.35 x 1.94	10'11" x 6'4"
Master Bedroom	3.61 x 2.87	11'10" x 9'5"
Balcony	1.64 x 2.24	5'4" x 7'4"

Apartment 75 — 1 bedroom

Total Internal Area	62.3m²	671ft²
Living/Dining	4.92 x 3.28	16'1" x 10'9"
Kitchen	3.73 x 1.73	12'3" x 5'8"
Master Bedroom	5.18 x 4.43	17'0" x 14'6"

Apartment 78 — 2 bedroom

Total Internal Area	103.7m²	1116ft²
Total External Area	7.0m²	75.3ft²
Living/Dining	6.91 x 3.80	22'8" x 12'5"
Kitchen	5.13 x 1.62	16'9" x 5'3"
Master Bedroom	4.08 x 5.22	13'4" x 17'1"
Bedroom one	3.27 x 4.51	10'8" x 14'9"
Balcony	3.17 x 2.17	10'5" x 7'1"



Sixth floor

Apartment 42 — 3 bedroom

Total Internal Area	91.3m²	983ft²
Total External Area	64.2m²	691ft²
Living/Dining	4.97 x 4.03	16'3" x 13'2"
Kitchen	4.97 x 1.49	16'3" x 4'10"
Master Bedroom	2.87 x 5.19	9'4" x 17'0"
Bedroom one	2.72 x 3.17	8'11" x 10'4"
Bedroom two	2.83 x 3.29	9'3" x 10'9"
Terrace	33.27 x 1.45	109'2" x 4'9"

Apartment 45 — 1 bedroom

Total Internal Area	57.3m²	617ft²
Living/Dining	4.92 x 3.51	16'1" x 11'6"
Kitchen	3.73 x 1.73	12'3" x 5'8"
Master Bedroom	4.49 x 2.77	14'9" x 9'1"

Apartment 86 — 2 bedroom

Total Internal Area	106.7m²	1149ft²
Total External Area	7.7m²	82.9ft²
Living/Dining	6.87 x 4.77	22'6" x 15'7"
Kitchen	2.47 x 4.33	8'1" x 14'2"
Master Bedroom	5.30 x 3.41	17'4" x 11'2"
Bedroom one	5.82 x 3.12	19'1" x 10'3"
Balcony	1.62 x 4.97	5'3" x 16'3"

Apartment 43 — 1 bedroom

Total Internal Area	44.3m²	477ft²
Total External Area	9.9m²	106.6ft²
Living/Dining	5.91 x 4.22	19'4" x 13'10"
Kitchen	3.35 x 1.94	10'11" x 6'4"
Master Bedroom	3.37 x 3.47	11'0" x 11'4"
Terrace	1.47 x 7.47	4'10" x 24'6"

Apartment 84 — 1 bedroom

Total Internal Area	62.4m²	672ft²
Living/Dining	4.92 x 3.28	16'1" x 10'9"
Kitchen	3.73 x 1.73	12'3" x 5'8"
Master Bedroom	5.16 x 4.90	16'11" x 16'1"

Apartment 87 — 3 bedroom

Total Internal Area	128.8m²	1386ft²
Total External Area	6.3m²	67.8ft²
Living/Dining	10.40 x 5.83	34'1" x 19'1"
Kitchen	4.96 x 1.82	16'3" x 5'11"
Master Bedroom	2.82 x 7.03	9'3" x 23'0"
Bedroom one	3.22 x 5.72	10'6" x 18'9"
Bedroom two	2.87 x 4.09	9'5" x 13'5"
Balcony	1.62 x 4.18	5'3" x 13'8"

Apartment 44* — 1 bedroom

Total Internal Area	57.0m²	614ft²
Total External Area	3.6m²	38.8ft²
Living/Dining	4.64 x 3.30	15'2" x 10'9"
Kitchen	4.30 x 1.82	14'1" x 5'11"
Master Bedroom	4.85 x 3.10	15'10" x 10'2"
Balcony	1.64 x 2.27	5'4" x 7'5"

Apartment 85 — 1 bedroom

Total Internal Area	54.0m²	581ft²
Total External Area	3.6m²	38.8ft²
Living/Dining	4.43 x 3.59	14'6" x 11'9"
Kitchen	4.09 x 2.00	13'5" x 6'6"
Master Bedroom	4.18 x 2.77	13'8" x 9'1"
Balcony	1.62 x 2.27	5'3" x 7'5"



*Wheelchair accessible dwellings

Apartment layouts provide approximate measurements only. Dimensions are for guidance only and all measurements and areas may vary within a tolerance of 5%.

Seventh floor

Apartment 46 — 3 bedroom

Total Internal Area	98.2m²	1057ft²
Total External Area	21.4m²	230.3ft²
Living/Dining	5.71 x 5.05	18'8" x 16'7"
Kitchen	3.76 x 2.71	12'4" x 8'10"
Master Bedroom	2.94 x 3.37	9'7" x 11'0"
Bedroom one	3.71 x 2.72	12'2" x 8'11"
Bedroom two	2.72 x 4.60	8'11" x 15'1"
Balcony	14.92 x 1.52	48'11" x 5'0"

Apartment 88 — 1 bedroom

Total Internal Area	59.5m²	640ft²
Living/Dining	4.93 x 3.28	16'2" x 10'9"
Kitchen	3.55 x 1.95	11'7" x 6'4"
Master Bedroom	4.39 x 4.94	14'5" x 16'2"

Apartment 91 — 2 bedroom

Total Internal Area	101.9m²	1097ft²
Total External Area	7.0m²	75.3ft²
Living/Dining	6.91 x 6.06	22'8" x 19'10"
Kitchen	5.13 x 2.14	16'10" x 7'0"
Master Bedroom	3.47 x 5.05	11'4" x 16'7"
Bedroom one	3.27 x 4.48	10'8" x 14'8"
Balcony	3.17 x 2.30	10'5" x 7'6"

Apartment 47 — 1 bedroom

Total Internal Area	52.3m²	563ft²
Total External Area	11.0m²	118.4ft²
Living/Dining	3.37 x 3.35	11'0" x 10'11"
Kitchen	3.55 x 1.95	11'7" x 6'4"
Master Bedroom	4.52 x 3.05	14'9" x 10'0"
Balcony	1.49 x 7.10	4'10" x 23'3"

Apartment 89 — 1 bedroom

Total Internal Area	49.6m²	534ft²
Total External Area	8.6m²	92.6ft²
Living/Dining	2.81 x 3.59	9'2" x 11'9"
Kitchen	3.55 x 1.95	11'7" x 6'4"
Balcony	1.44 x 5.82	4'8" x 19'1"

Apartment 92 — 1 bedroom

Total Internal Area	52.8m²	568ft²
Living/Dining	6.91 x 6.06	22'8" x 19'10"
Kitchen	5.13 x 2.14	16'10" x 7'0"
Master Bedroom	3.32 x 3.81	10'10" x 12'6"

Apartment 48 — 1 bedroom

Total Internal Area	52.7m²	567ft²
Living/Dining	4.93 x 2.77	16'2" x 9'1"
Kitchen	3.55 x 1.95	11'7" x 6'4"
Master Bedroom	4.39 x 2.77	14'5" x 9'1"

Apartment 90 — 2 bedroom

Total Internal Area	106.5m²	1146ft²
Total External Area	9.9m²	106.6ft²
Living/Dining	6.54 x 5.38	21'5" x 17'7"
Kitchen	2.62 x 4.45	8'7" x 14'7"
Master Bedroom	4.41 x 3.10	14'5" x 10'2"
Bedroom one	5.05 x 2.62	16'6" x 8'7"
Balcony one	1.62 x 2.27	5'3" x 7'5"
Balcony two	1.62 x 4.18	5'3" x 13'8"

Apartment 93* — 3 bedroom

Total Internal Area	120.4m²	1296ft²
Total External Area	30.0m²	322.9ft²
Living/Dining	4.03 x 8.56	13'2" x 28'1"
Kitchen	3.94 x 2.97	12'11" x 9'9"
Master Bedroom	4.19 x 3.09	13'8" x 10'1"
Bedroom one	3.59 x 2.97	11'9" x 9'9"
Bedroom two	4.88 x 2.97	16'0" x 9'9"
Balcony	4.03 x 7.71	13'2" x 25'3"



*Wheelchair accessible dwellings

Apartment layouts provide approximate measurements only. Dimensions are for guidance only and all measurements and areas may vary within a tolerance of 5%.

Eighth floor

Apartment 94 — 2 bedroom

Total Internal Area	77.1m²	830ft²
Total External Area	25.0m²	269.1ft²
Living/Dining	3.92 x 5.75	12'10" x 18'10"
Kitchen	2.12 x 5.14	6'11" x 16'10"
Master Bedroom	4.36 x 2.90	14'3" x 9'6"
Bedroom one	2.72 x 4.00	8'11" x 13'1"
Terrace	2.02 x 13.12	6'7" x 43'0"

Apartment 97 — 3 bedroom

Total Internal Area	96.6m²	1040ft²
Total External Area	38.4m²	413.3ft²
Living/Dining	4.53 x 5.58	14'10" x 18'3"
Kitchen	4.87 x 1.95	15'11" x 6'4"
Master Bedroom	2.76 x 3.85	9'0" x 12'7"
Bedroom one	3.19 x 3.64	10'5" x 11'11"
Bedroom two	3.72 x 3.23	12'2" x 10'7"
Terrace	28.78 x 1.50	94'5" x 4'11"

Apartment 95 — 2 bedroom

Total Internal Area	87.5m²	942ft²
Total External Area	46.0m²	495.1ft²
Living/Dining	5.01 x 6.05	16'5" x 19'10"
Kitchen	2.62 x 4.13	8'7" x 13'6"
Master Bedroom	3.69 x 3.56	12'1" x 11'8"
Bedroom one	3.89 x 3.36	12'9" x 11'0"
Terrace	6.59 x 7.32	21'7" x 24'0"

Apartment 98 — 2 bedroom

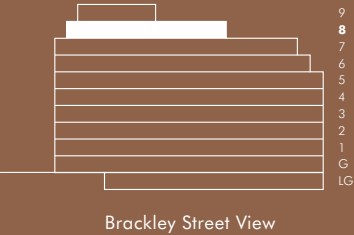
Total Internal Area	92.9m²	1000ft²
Total External Area	72.3m²	778.2ft²
Living/Dining	5.43 x 5.39	17'9" x 17'8"
Kitchen	3.40 x 2.77	11'1" x 9'1"
Master Bedroom	5.50 x 3.47	18'0" x 11'4"
Bedroom one	4.65 x 3.09	15'3" x 10'1"
Terrace	4.05 x 37.97	13'3" x 124'7"

Apartment 96 — 1 bedroom

Total Internal Area	55.2m²	594ft²
Total External Area	11.6m²	124.9ft²
Living/Dining	3.91 x 4.22	12'10" x 13'10"
Kitchen	3.70 x 2.84	12'1" x 9'4"
Master Bedroom	3.35 x 3.05	10'11" x 10'0"
Terrace	1.45 x 8.07	4'9" x 26'5"

Eighth floor

- 1 bedroom
- 2 bedroom
- 3 bedroom



Apartment layouts provide approximate measurements only. Dimensions are for guidance only and all measurements and areas may vary within a tolerance of 5%.

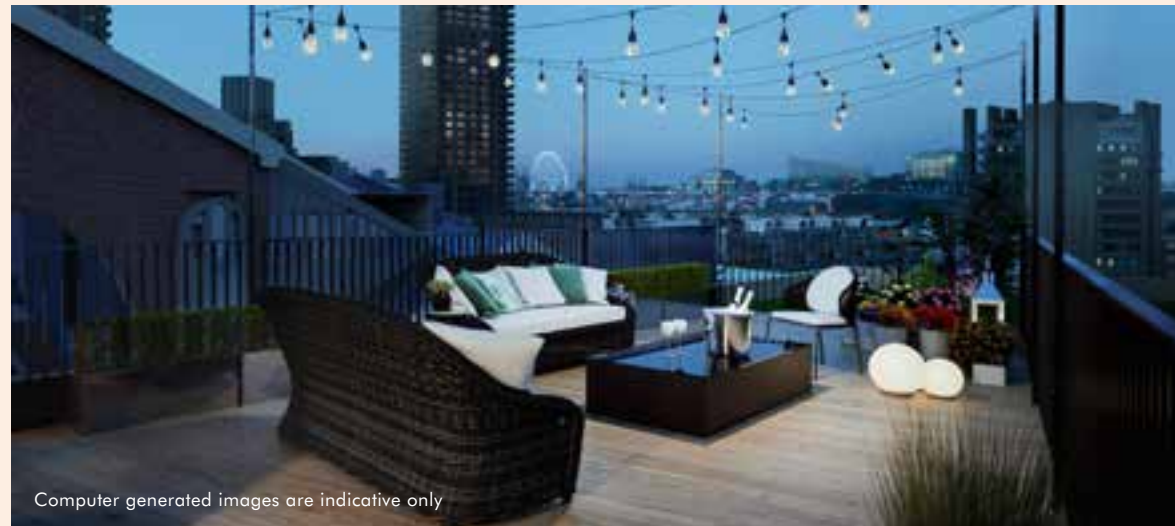
Ninth floor

— Penthouse

Penthouse

— 3 bedroom

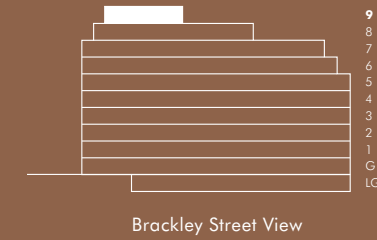
Total Internal Area	125.8m ²	1345ft ²
Total External Area	59.0m ²	635.1ft ²
Living/Dining	8.03 x 4.78	26'4" x 15'8"
Kitchen	6.24 x 3.36	20'5" x 11'0"
Master Bedroom	3.82 x 3.48	12'6" x 11'5"
Bedroom one	2.95 x 3.48	9'8" x 11'5"
Bedroom two	2.95 x 2.87	9'8" x 9'4"
Terrace one	9.25 x 4.52	30'4" x 14'10"
Terrace two	15.03 x 1.55	49'3" x 5'1"



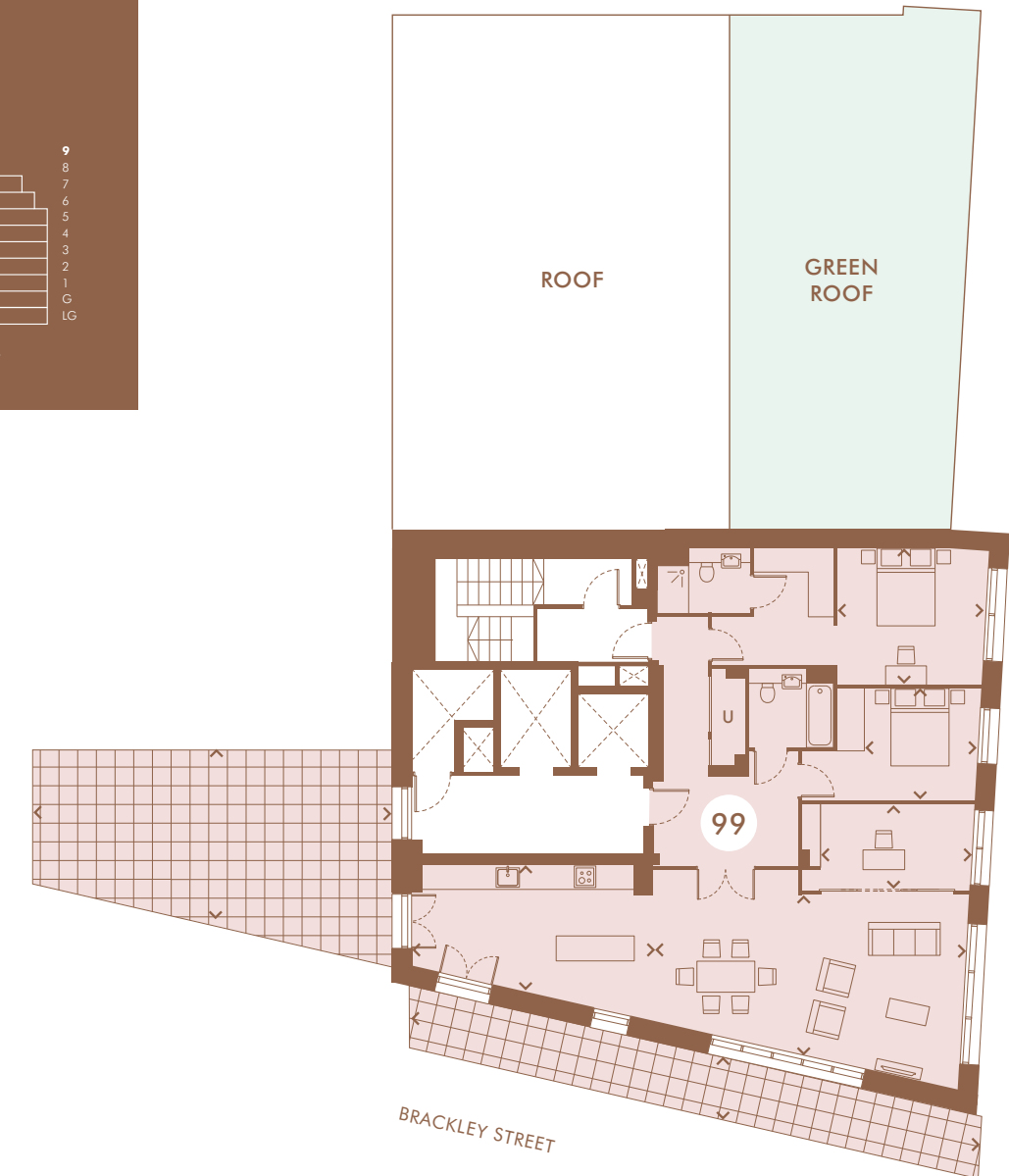
Apartment layouts provide approximate measurements only. Dimensions are for guidance only and all measurements and areas may vary within a tolerance of 5%.

Ninth floor

■ 3 bedroom



GOLDEN LANE >



▼ THE CITY ▼

The developer of choice

Taylor Wimpey Central London is part of Taylor Wimpey plc – one of the UK’s largest residential developers and a FTSE 100 listed company. We feel that being part of a recognised and respected company offers our customers stability and confidence in delivery, and our specialist Central London arm is dedicated to creating unique developments suited to the Central London market where attention to detail and a unique service is key. We believe this combination enables us to offer a personalized service to our varying range of customers all of whom have different requirements for where they want to call their own.

We recognise everyone is different and seek to reflect this in our bespoke development portfolio and create unique buildings where attention to detail is paramount. We recognise that sometimes it is not easy to choose your perfect home or investment, but we aim to provide a dedicated customer service throughout the process to help you make that choice. Our aim is that you are delighted that you chose Taylor Wimpey Central London.

We know that buying a home is a significant financial and personal investment. We aim to make the whole process as simple and straightforward as possible. The Taylor Wimpey Central London Customer Journey is a set of procedures designed to ensure all customers have the best possible experience, from reserving their home right through to aftercare once the purchase is completed. We pride ourselves on providing our customers with a personalised professional service on all aspects of their purchase.

We constantly achieve a high ranking with the Home Builders Federation star ratings for customer satisfaction. All of our homes come with a two-year Taylor Wimpey Warranty and a ten-year Buildmark cover from the National House Building Council. We are a customer-focused business with a firm commitment to build homes of the highest quality.



Photography and computer generated images are indicative only

Above: Show home photography at Postmark, Farringdon
Right: Computer generated image of Junction House, Battersea



Contact us



Taylor Wimpey Central London
thedenizen@taylorwimpey.com
taylorwimpeycentrallondon.co.uk

thedenizen.co.uk

† Copyright Tristan Fewings / Getty Images †† Copyright Chris Lee - New York Philharmonic

Floor plans are intended to give a general indication of the proposed floor layout only and apartment layouts provide approximate measurements only. Dimensions are for guidance only and all measurements and areas may vary within a tolerance of 5%. Dimensions are not intended to be used for carpet sizes, appliance space or items of furniture. Total areas are provided as GIA under the RICS measuring practice. Kitchen and bathroom layouts are indicative only and are subject to change. Furniture and landscaping is shown for illustrative purposes only. All images and dimensions are not intended to form part of any contract or warranty. All images used, including CGIs and view photography, are for illustrative purposes only. Individual features such as windows, brick and other materials'colours may vary, as may heating and electrical layouts. The name The Denizen is for marketing purposes and will not form part of the postal address. 2019 version.



Taylor
Wimpey
Central London