



Croftdown Road, NW5

£1,500,000

Dexters



Croftdown Road, NW5

A beautifully presented three bedroom, two bathroom garden apartment, set within an elegant period conversion. Arranged over two floors, the property offers an impressive mix of natural light and stylish living space.

On the raised ground floor, high-ceilings, original wood flooring and large sash windows create a bright and characterful feel. This level also houses two generous double bedrooms and a modern family bathroom.

The standout feature lies on the lower ground floor, a stunning, expansive open plan kitchen and reception room that opens directly onto a private south facing garden, perfect for entertaining or relaxing in the sun. A spacious third bedroom is also situated on this floor, with views of the garden.

Ideally located just a short stroll from the open green spaces of Hampstead Heath, the charming cafés and village atmosphere of Swains Lane, and the independent shops, delis, and restaurants of Fortress Road.

Features

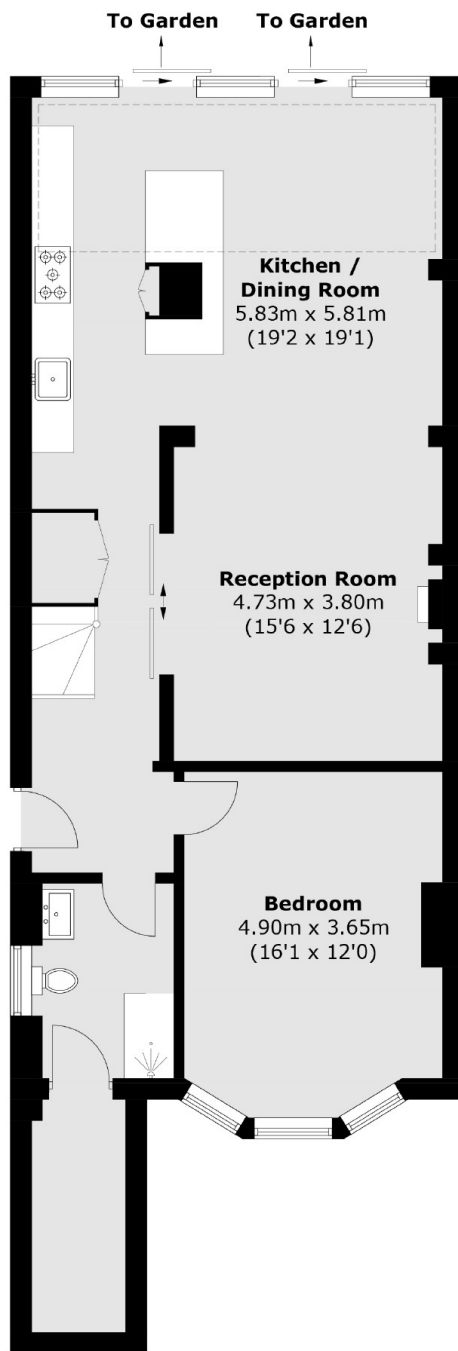
- South Facing Garden
- High Ceilings
- Expansive Kitchen/Diner
- Spacious Double Bedrooms
- Charming Period Character
- Prime Location



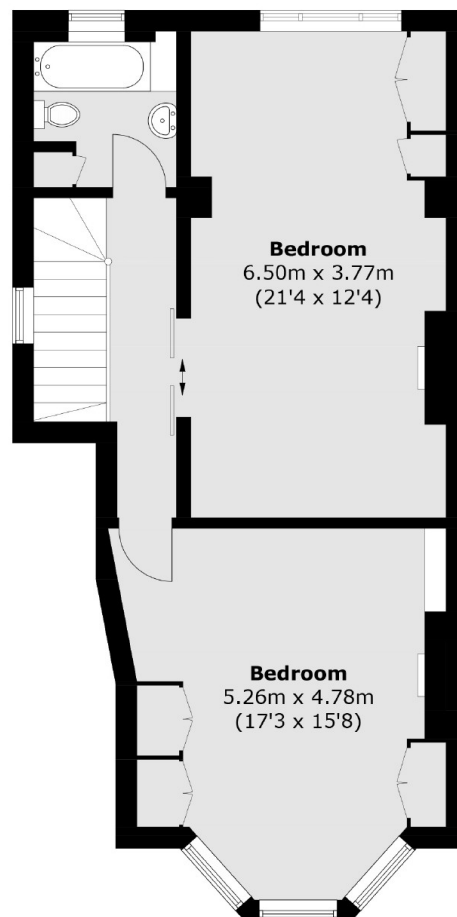




Croftdown Road, London, NW5



Lower Ground Floor



Raised Ground Floor

Total area (approx.): 147.6 sq. m (1,588.7 sq. ft)