



Gladys Road, NW6

£1,025,000

An exceptional two bedroom apartment with roof terrace offered in turnkey condition and situated in the heart of bustling West Hampstead. Located on a quiet residential road moments away from West Hampstead High Street.

Gladys Road is a quiet residential street conveniently located near to West Hampstead tube station (Jubilee Line), London Overground and Thameslink. The green open spaces of Kilburn Grange Park is within easy reach.

Features

- Two Double Bedrooms
- Two Bathrooms
- Private Terrace
- Recently Refurbished
- Share Of Freehold
- Private Entrance



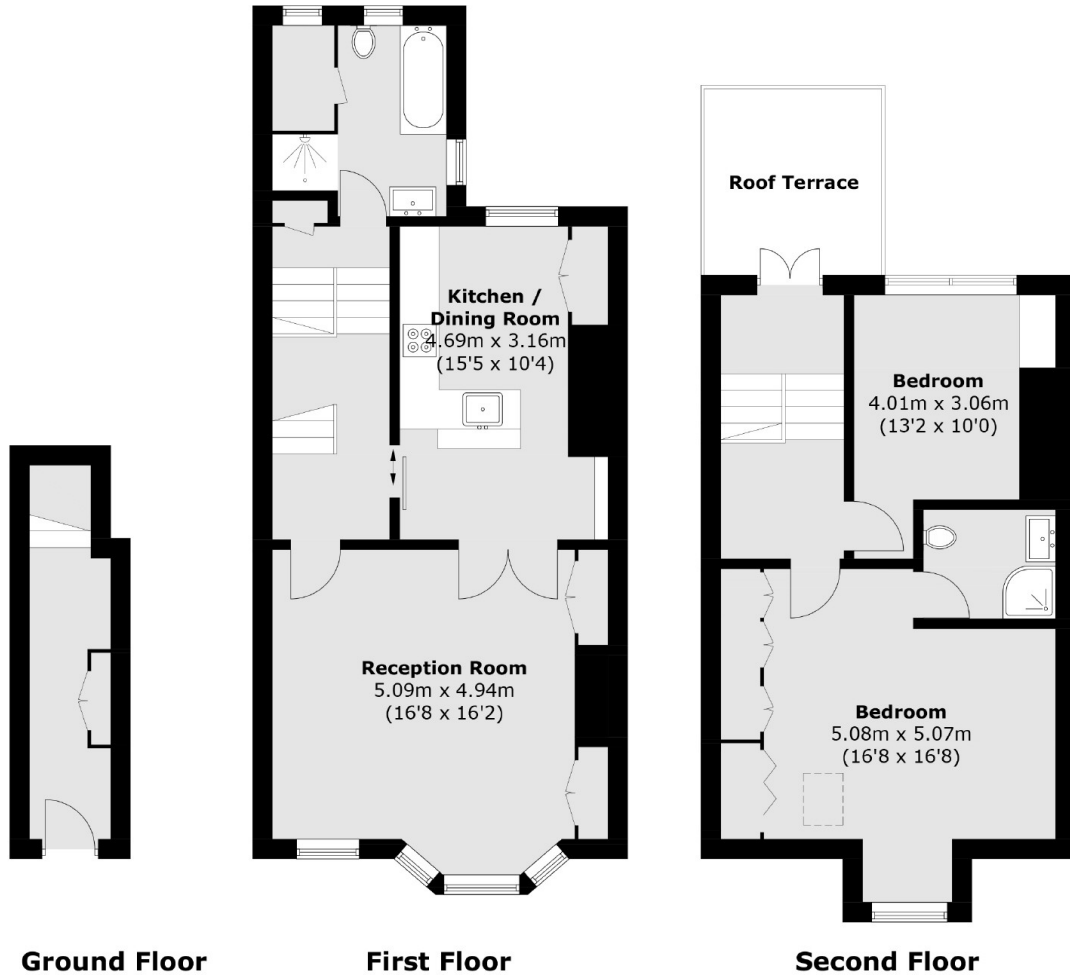
Gladys Road, NW6

This property has been beautifully designed by its current owners. The first floor offers a spacious open plan kitchen/reception room with large bay windows allowing natural light to flood in and a high quality integrated kitchen. On the second floor, two well proportioned double bedrooms, two top spec bathrooms, one shared bathroom as well as one en-suite.

The roof terrace offers a peaceful space to relax which comfortably fits a table and chairs allowing one to bask in the morning sun.



Gladys Road,
London, NW6



Total area (approx.): 106.6 sq. m (1,147.4 sq. ft)
Roof Terrace area (approx.): 7.6 sq. m (81.8 sq. ft)