



Hampstead Village, NW3

£1,000 Per week

A beautifully presented and spacious three bedroom, two bathroom duplex maisonette with split level garden accessed from the master bedroom and reception. There are two receptions and an open plan kitchen.

Enviably located in Hampstead Village sandwiched between Hampstead Heath and Hampstead High Street where you can eat at the award winning Goldfish Chinese or grab a crepe at the famous crepe stall.

Features

Three Bedrooms
Two Bathrooms
Split Level Garden
Two Receptions
Open Plan Kitchen
Over Two Floors



Denning Road, London, NW3

The apartment has an entrance on the raised ground floor via the main house and directly from the lower ground floor straight in. Arranged over two floors with the living areas on the upper level and the bedrooms and bathrooms on the lower level.

The front reception is a great size with hardwood floors, bay window and a feature fireplace. The second reception has the kitchen combined with a breakfast bar and plenty of space for sofa or dining area.

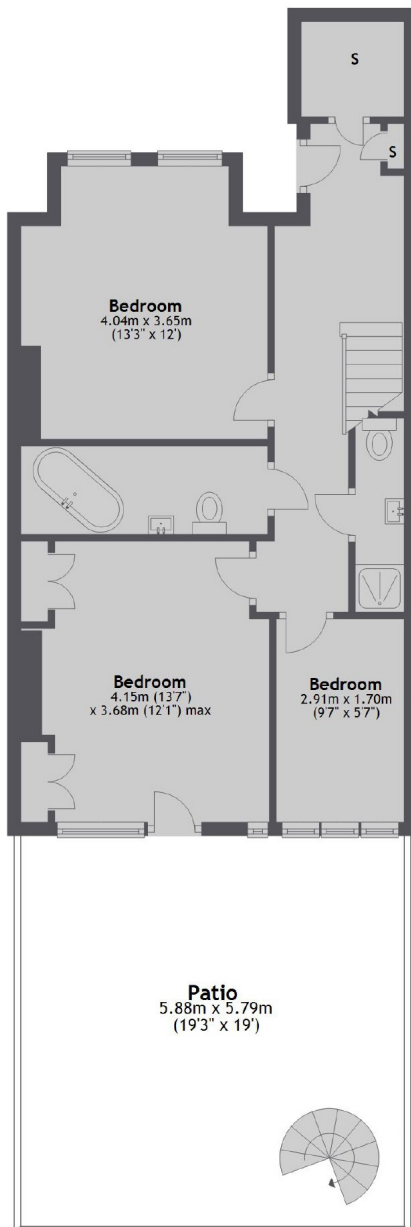
Downstairs are two good size bedrooms and a smaller bedroom/study and a separate bathroom and shower room. The garden is absolutely stunning with a patio on the lower level from the master bedroom up to the lawned area on the upper level.



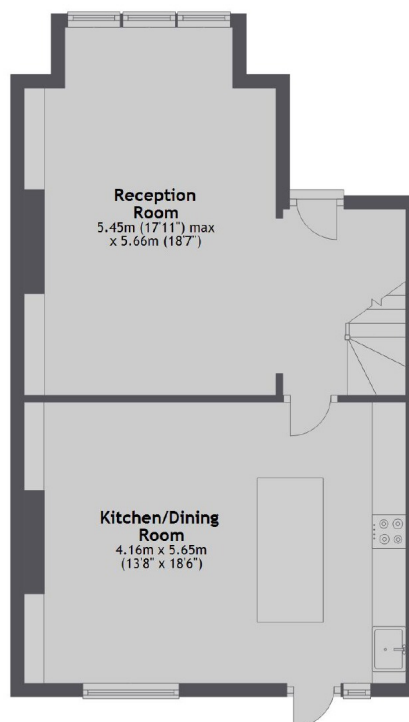


Denning Road, London, NW3

Lower Ground Floor



Ground Floor



Total area: approx. 104.1 sq. metres (1120.4 sq. feet)

Contact

To arrange a viewing call our office on the number below or visit our website.



Energy Rating: D. We aim to make our particulars both accurate and reliable. However they are not guaranteed; nor do they form part of an offer or contract. If you require clarification on any points then please contact us, especially if you're traveling some distance to view. Please note that appliances and heating systems have not been tested and therefore no warranties can be given as to their good working order.