



Hampstead, NW3

£3,500,000

Dexters



Carlingford Road, London, NW3

A substantial, character filled Victorian family house with well balanced accommodation of approximately 2815 square feet, quietly and conveniently located just off Hampstead High Street.

With generous high ceilings to the principal rooms the house retains many of the original Victorian features including stained glass, fireplaces and ceiling mouldings.

Comprising three reception rooms, kitchen and utility room over the ground and raised ground floors, five double bedrooms, two bathrooms, plus three separate wc's arranged over the upper three floors.

The entire second floor is dedicated to a spacious master suite which includes a dressing room, a generous ensuite bathroom and a study. To the rear there is a pretty patio garden and balcony off the top floor rear bedroom with breathtaking views towards Hampstead Heath.

Carlingford Road is a highly regarded road, equidistant between the charming, vibrant high street and the green open spaces of Hampstead Heath.

The vibrant centre of the Village and underground station is 0.2 miles away and the overground station is 0.3 miles away.

Features

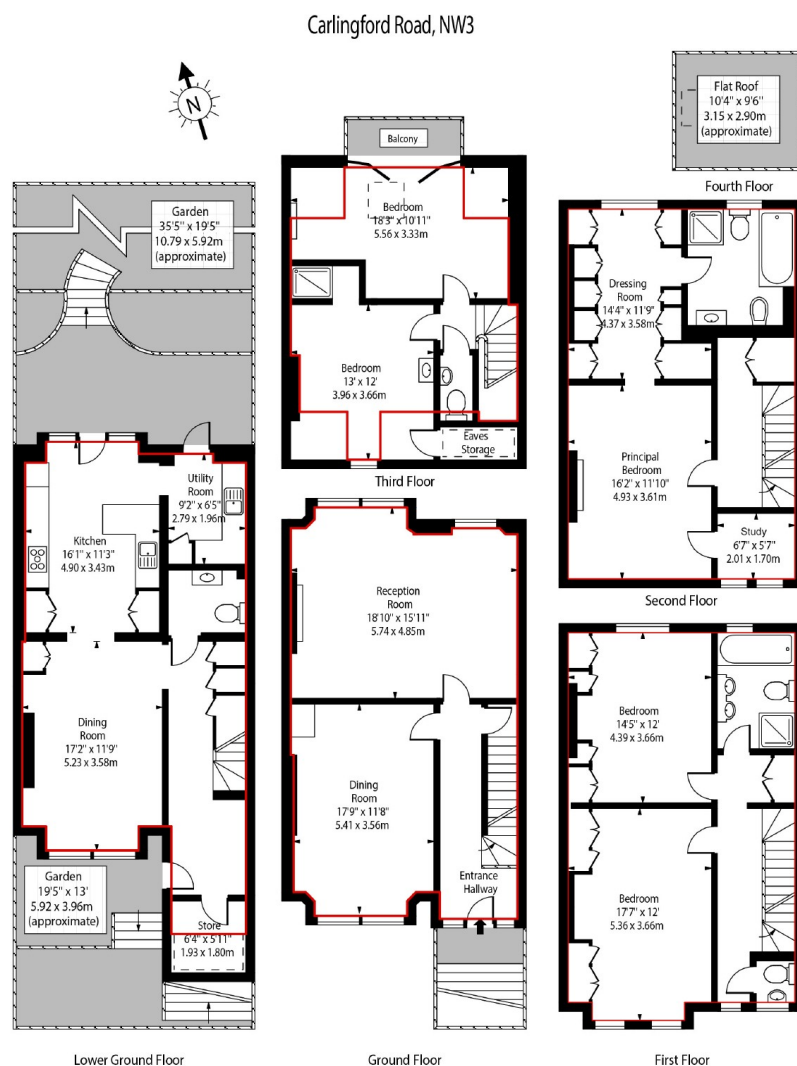
Victorian Family Home
2815 Square Feet
Three Reception Rooms
Five Bedrooms
Front and Rear Gardens
Fabulous Views







Carlingford Road, London, NW3



Approximate Square Footage Within Red Line

2815 Sq Ft - 261.52 Sq M

Approx Floor Area Including Restricted Heights

2935 Sq Ft - 272.67 Sq M

For Illustration Purposes Only - Not To Scale Floor Plan by www.nogaphotostudio.com Ref: No.38400

This floor plan should be used as a general outline for guidance only. Any intending purchaser or lessee should satisfy themselves by inspection, searches, enquiries and full survey as to the correctness of each statement. Any areas, measurements or distances quoted are approximate and should not be used to value a property or be the basis of any sale or let.

Dexters

Hampstead
56 Heath Street, Hampstead,
London, NW3 1DL

Sales
020 7435 9822

Energy Rating: E. We aim to make our particulars both accurate and reliable. However they are not guaranteed; nor do they form part of an offer or contract. If you require clarification on any points then please contact us, especially if you're traveling some distance to view. Please note that appliances and heating systems have not been tested and therefore no warranties can be given as to their good working order.

 **RICS** | Regulated
Estate Agent
and Letting Agent

dexters.co.uk