

HEATH PARK GARDENS  
HAMPSTEAD





A spectacular first floor apartment forming part of a contemporary gated purpose built block in a sought after location on the corner of Templewood Avenue and Grange Gardens, close to Hampstead Heath, within half a mile of Hampstead underground station, zone 2 Northern Line.

The internal communal areas have been renovated to an exceptionally high standard

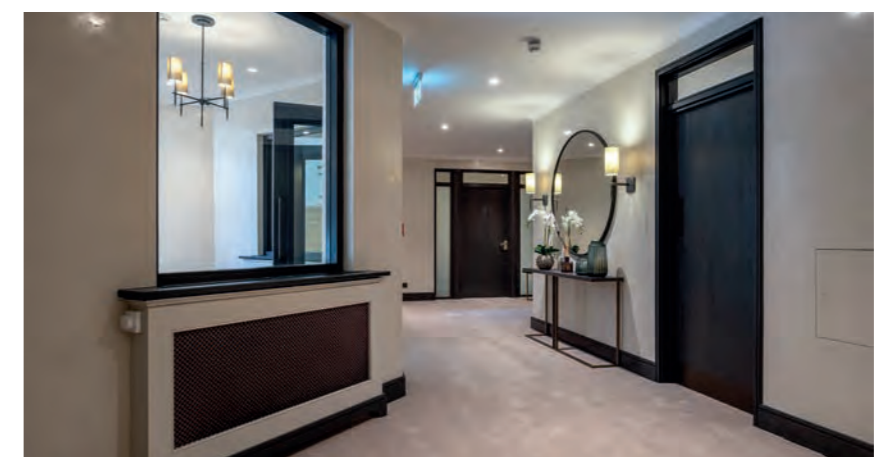
this year, making it one of the premier blocks in one of the premier roads in Hampstead. The property is quietly situated within the block and offers seclusion and privacy provided by the established trees.

The flat has been extensively improved by the current owner and features a wonderful 38' reception room which opens on to a private 37' x 21' secluded west facing patio, leading on to large



manicured communal gardens approaching 1 acre. It enjoys access to a gymnasium, indoor pool and sauna. In addition, the flat has two secure reserved underground car parking spaces with two large lock up storage cupboards, with visitor parking on the forecourt.



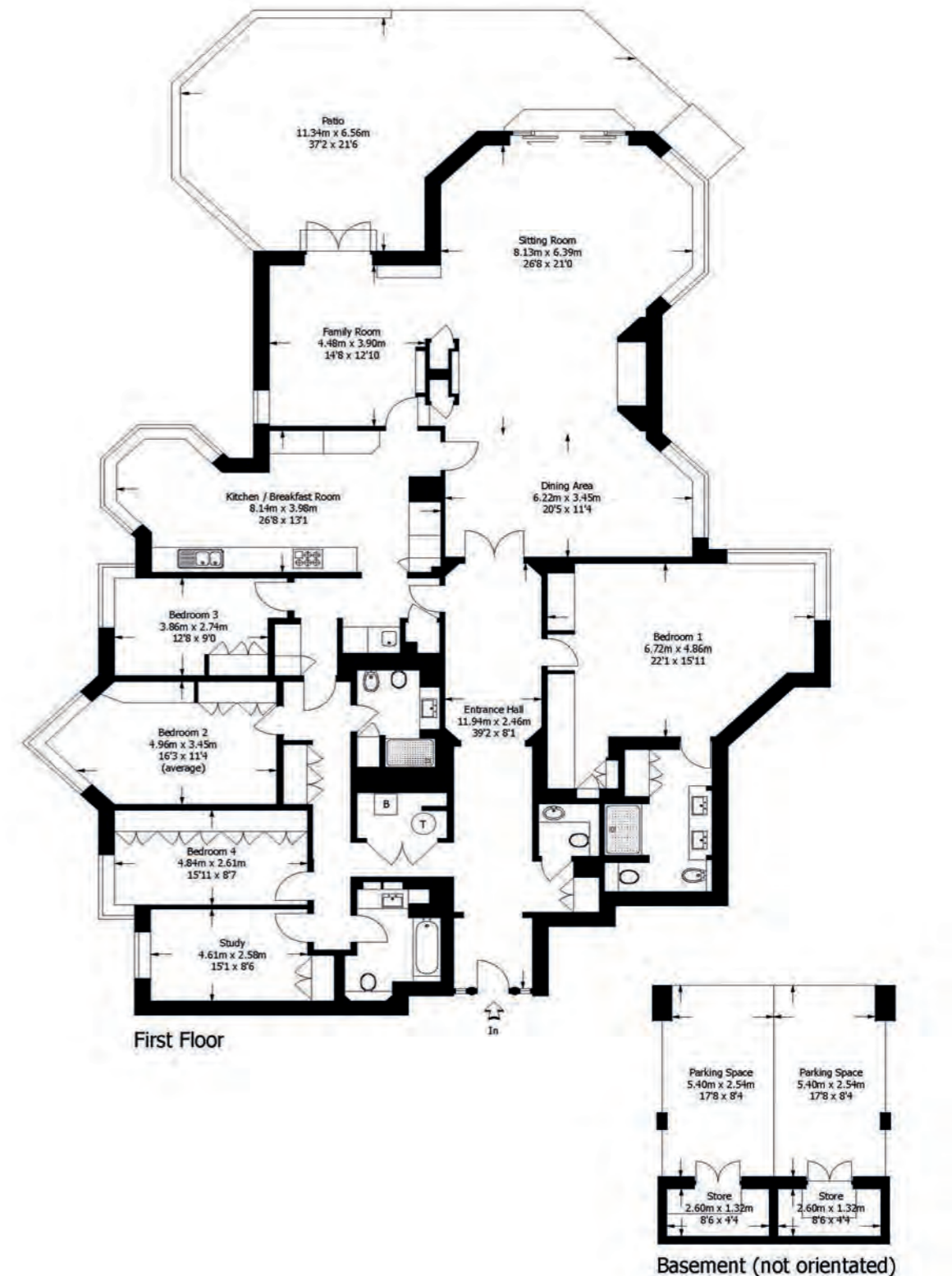


- Five Bedrooms
- Three Bathrooms
- Reception/Dining Room
- Share of Freehold
- 24-Hour Concierge
- Underground Parking





## Heath Park Gardens, Hampstead London, NW3



Dexters Hampstead  
56 Heath Street,  
London, NW3 1DL  
Sales  
+ 44 (0) 20 7435 9822

TOTAL APPROX. FLOOR AREA 3,165 SQ. FT (294 SQ. M)

Energy Rating: C. We aim to make our particulars both accurate and reliable. However they are not guaranteed, nor do they form part of an offer or contract. If you require clarification on any points then please contact us, especially if you're traveling some distance to view. Please note that appliances and heating systems have not been tested and therefore no warranties can be given as to their good working order.



Price on application

**Dexters**

Hampstead  
+ 44 (0) 20 7435 9822

[dexters.co.uk](https://dexters.co.uk)