



Willifield Way, NW11

£1,100,000

Designed by C M Crickmer and listed as Grade II by English Heritage. A particularly spacious (1,447 sq ft) cottage with beautiful garden, kitchen/breakfast room and generous sized reception, three double bedrooms, two bathrooms and a guest WC.

Perfectly placed on the south side of Hampstead Garden Suburb, close to local schools, shopping in Temple Fortune and Big Wood, there is a local (H2) bus to Golders Green underground station.

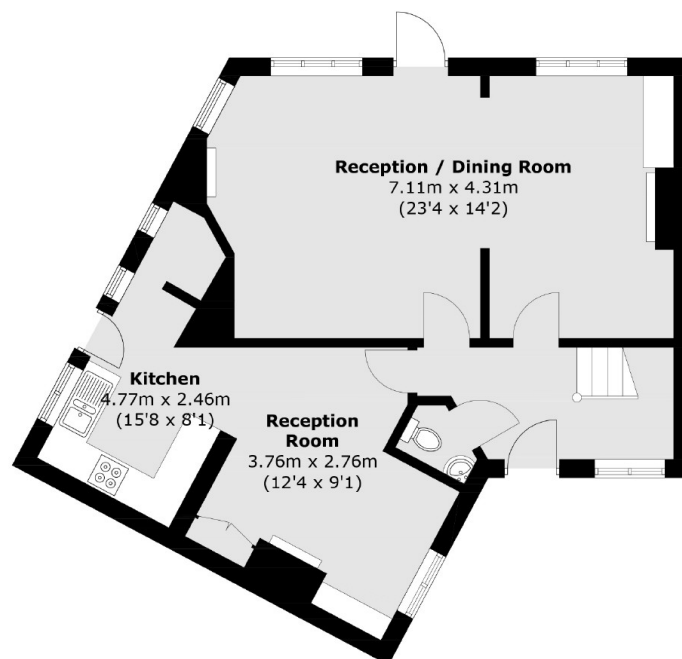
Features

- Large reception
- Kitchen/breakfast room
- Three double bedrooms
- Two bathrooms
- Guest WC
- Beautiful garden

Willifield Way,
London, NW11



First Floor



Ground Floor

Total area (approx.): 134.5 sq. m (1,447.7 sq. ft)

Dexters

Hampstead
56 Heath Street
London
NW3 1DL
Sales
020 7433 0273

Energy Rating: D. We aim to make our particulars both accurate and reliable. However they are not guaranteed; nor do they form part of an offer or contract. If you require clarification on any points then please contact us, especially if you're traveling some distance to view. Please note that appliances and heating systems have not been tested and therefore no warranties can be given as to their good working order.

 **RICS** | Regulated
Estate Agent
and Letting Agent

dexters.co.uk