



## Lower Terrace, NW3

£16,000 Per calendar month

This lateral three-bedroom apartment spans over 2,500 sq ft and offers generous living space. It features a grand double reception room, separate kitchen, large principal bedroom with en suite and separate shower, two additional bedrooms, guest cloakroom, utility room, and a private enclosed balcony.

Residents also enjoy exclusive amenities including a swimming pool, gym, landscaped communal gardens, 24-hour concierge, private storage, and two designated underground parking spaces.

Summit Lodge is located at the highest point in Central London, overlooking Whitestone Pond and Hampstead Heath, and is a short walk from Hampstead High Street and Hampstead Underground Station (Northern Line)

### Features

Exclusive Development  
Three Double Bedrooms  
Huge Lateral Apartment  
Two Parking Spaces  
24 Hour Concierge  
Pool and Gym

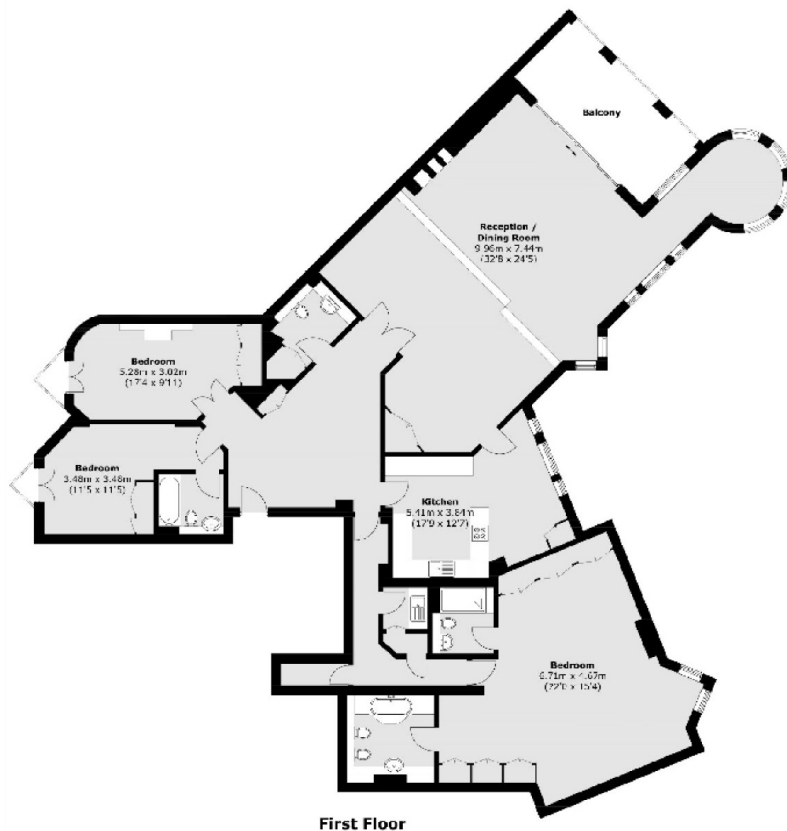


**Lower Terrace, NW3**





# Lower Terrace, London, NW3



Total area (approx.): 235.22 sq. m (2532 sq. ft)

## Dexters

Hampstead  
56 Heath Street  
London  
NW3 1DL  
Lettings  
020 7433 0274

Energy Rating: B. We aim to make our particulars both accurate and reliable. However they are not guaranteed; nor do they form part of an offer or contract. If you require clarification on any points then please contact us, especially if you're traveling some distance to view. Please note that appliances and heating systems have not been tested and therefore no warranties can be given as to their good working order.

 **RICS** | Regulated  
Estate Agent  
and Letting Agent

[dexters.co.uk](https://www.dexters.co.uk)