



Roderick Road, NW3

£3,500 Per calendar month

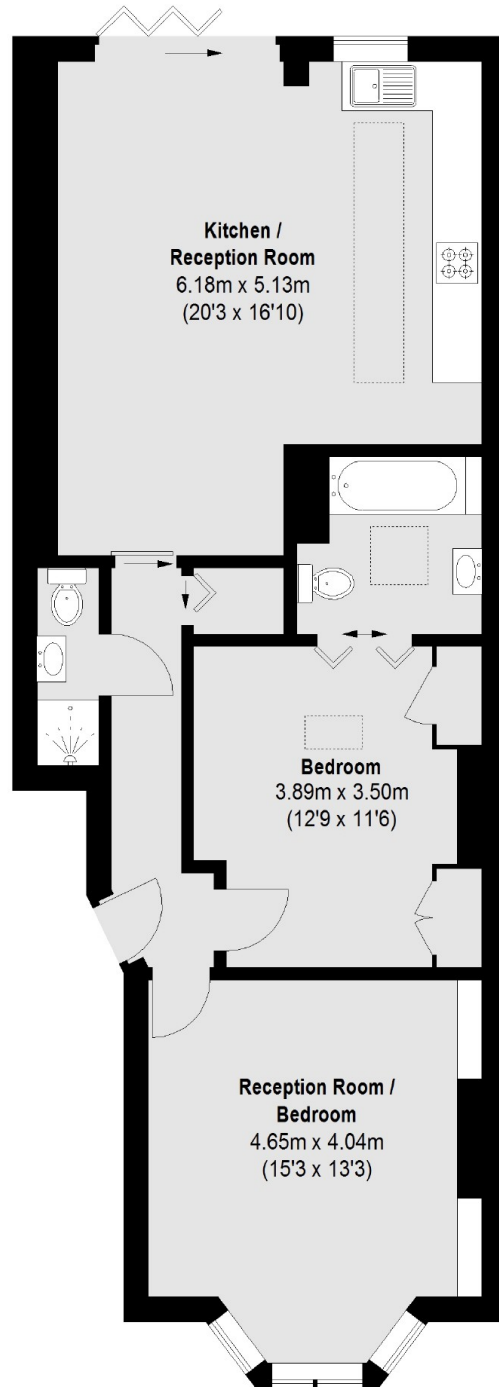
A charming two double bedroom flat located on the ground of this period conversion. The property has an open plan kitchen with direct access to a private garden, two bathrooms and wooden flooring throughout.

Roderick Road is a quiet residential street with Hampstead Heath around the corner. You are under a mile to Belsize Park tube and Hampstead Heath railway station is at the top of the road.

Features

- Ground Floor
- Two Double Bedrooms
- Two Bathrooms
- Wood Floor Throughout
- Private Garden
- Built In Storage

Roderick Road,
London, NW3



Total area (approx.): 73.70 sq. m (793 Sq. ft)

Dexters

Hampstead
56 Heath Street
London
NW3 1DL
Lettings
020 7433 0274

Energy Rating: D. We aim to make our particulars both accurate and reliable. However they are not guaranteed; nor do they form part of an offer or contract. If you require clarification on any points then please contact us, especially if you're traveling some distance to view. Please note that appliances and heating systems have not been tested and therefore no warranties can be given as to their good working order.

 **RICS** | Regulated
Estate Agent
and Letting Agent

dexters.co.uk