



Belsize Park, NW3
£3,200,000



Belsize Park, NW3

This elegant split-level garden maisonette is set within a charming period conversion in the heart of Belsize Park.

Accessed via its own private entrance, the property offers impressive ceiling heights and a sense of grandeur throughout.

The spacious open-plan kitchen and reception room opens directly onto a well-maintained shared garden, ideal for indoor-outdoor living. Accommodation comprises three generous bedrooms, three stylish bathrooms.

Thoughtfully laid out over two levels, the home combines period character with modern finishes. Offered with a share of freehold and sold chain free, it's an exceptional opportunity in a sought-after location.

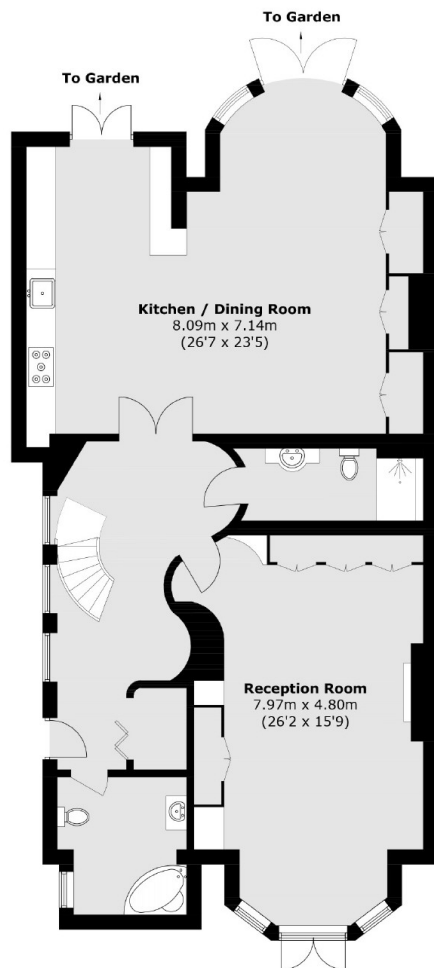
Belsize Park is a leafy, village-like enclave near independent cafés, boutiques, and gastropubs. The neighbourhood is well-connected: served directly by Belsize Park station (Northern line) and Swiss Cottage station (Jubilee line) plus easy bus links.

Features

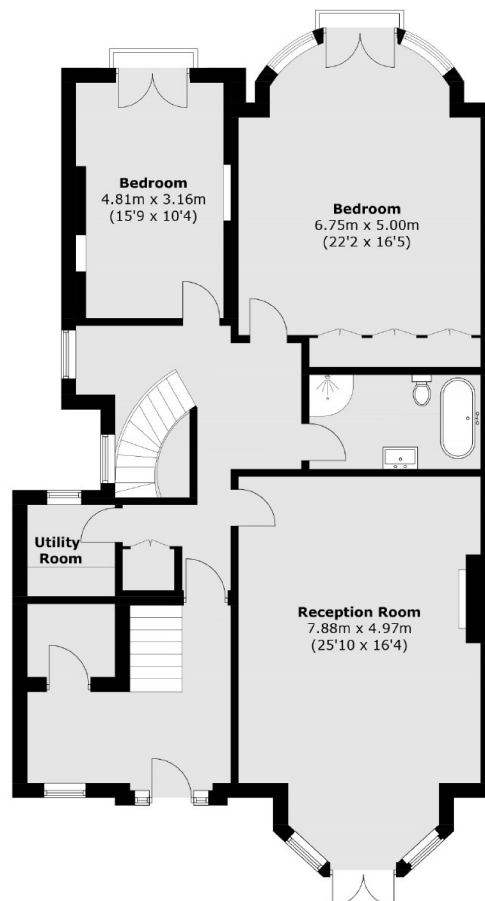
- Three Bedrooms
- Chain Free
- Share of Freehold
- High Ceilings
- Shared Garden
- Three Bathrooms



Belsize Park, London, NW3



Lower Ground Floor



Raised Ground Floor

Total area (approx.): 249.3 sq.m (2,683.3 sq. ft)

Dexters

Hampstead
56 Heath Street
London
NW3 1DL
Sales
020 7433 0273

Energy Rating: E. We aim to make our particulars both accurate and reliable. However they are not guaranteed; nor do they form part of an offer or contract. If you require clarification on any points then please contact us, especially if you're traveling some distance to view. Please note that appliances and heating systems have not been tested and therefore no warranties can be given as to their good working order.

 **RICS** | Regulated
Estate Agent
and Letting Agent

[dexters.co.uk](https://www.dexters.co.uk)