

Belsize Park, NW3

£4,000 Per calendar month

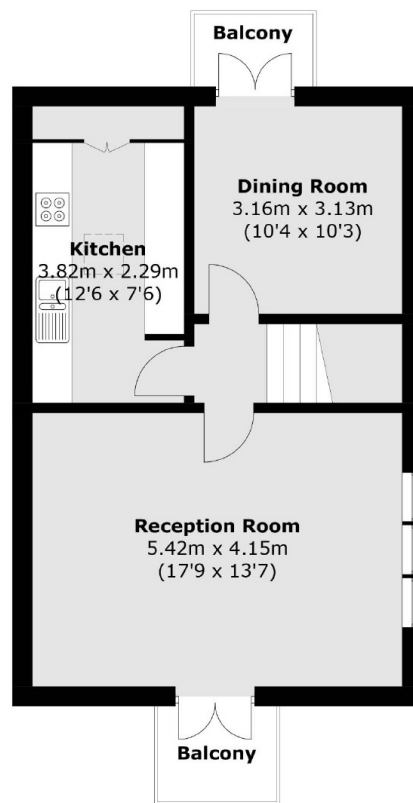
A three double bedroom duplex apartment arranged over the top two floors of this conversion with a large reception room, a separate dining room and two private balconies.

Belsize Park is located a short walk from Swiss Cottage tube station giving you quick access to the City and Central London on the Jubilee Line

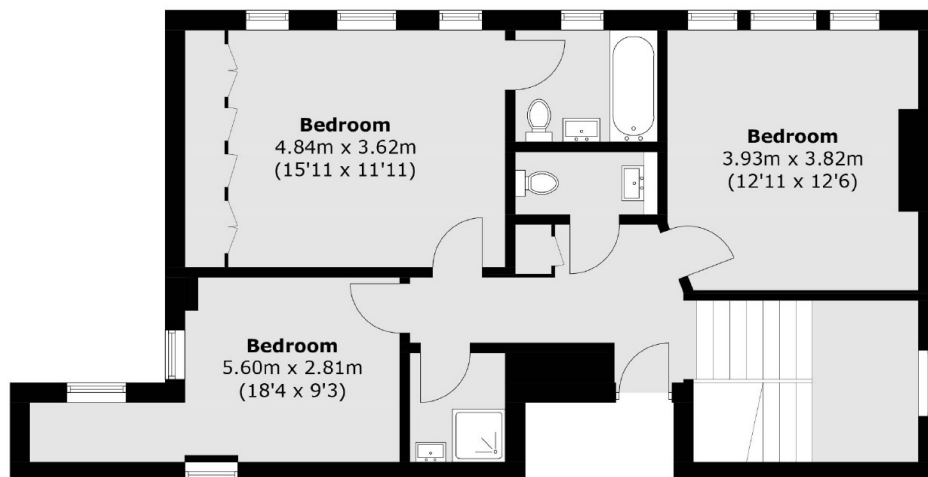
Features

- Split Level
- Three Double Bedrooms
- Two Bathrooms
- Private Balcony
- Built In Storage
- Great Location

Belsize Park, London, NW3



Second Floor



First Floor

Total area (approx.): 120.1 sq. m (1,292.8 sq. ft)
Balcony area (approx.): 4.6 sq. m (49.5 sq. ft)