



Highgate, N6

£2,000,000

Dexters



Langbourne Avenue, London, N6

Set back and elevated with far reaching views of the London skyline from the upper floors, a highly sought after family house on the popular Holly Lodge, just moments from the heath.

With an abundance of charm the property has a welcoming entrance hall and bay fronted reception with parquet flooring.

Also on the ground floor is a guest cloakroom and full width kitchen/diner leading to the garden. On the upper floors there are five bedrooms, and two bathrooms along with a dressing room.

The delightful rear garden has been lovingly tended and is an oasis of calm with a wide range of planting and a summer house.

Langbourne Avenue is perfectly located, just a short walk from the open acres of Hampstead Heath and the transport and shopping facilities of Swains Lane.

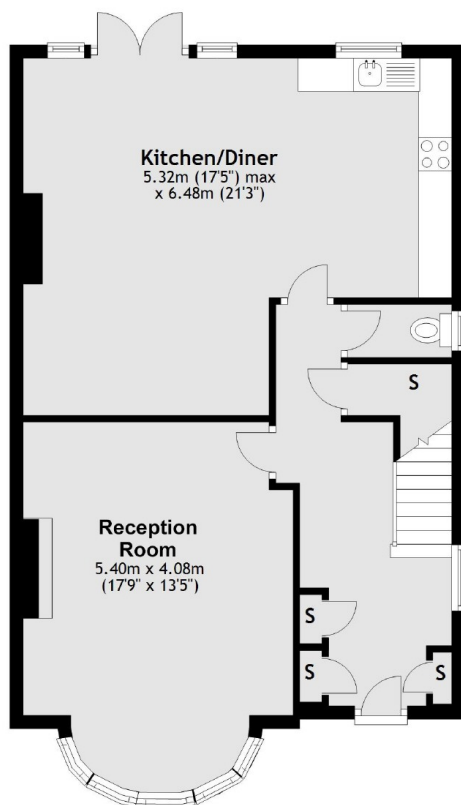
Features

- Five Bedrooms
- Two Bathrooms
- Kitchen/Diner
- Guest WC
- Gardens
- Far Reaching Views

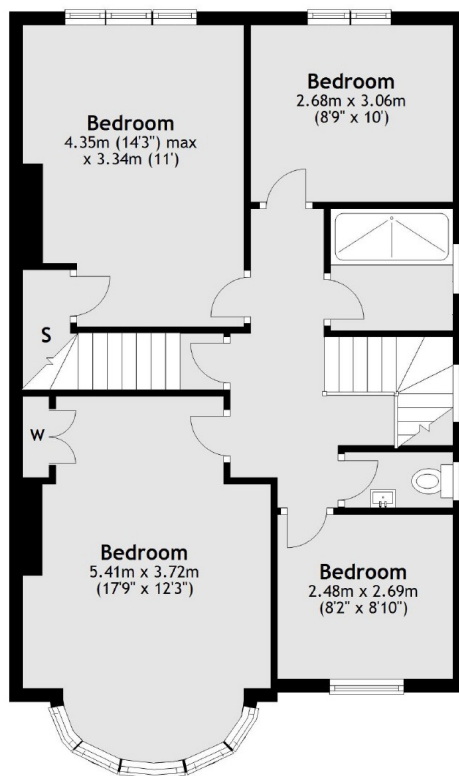


Langbourne Avenue, London, N6

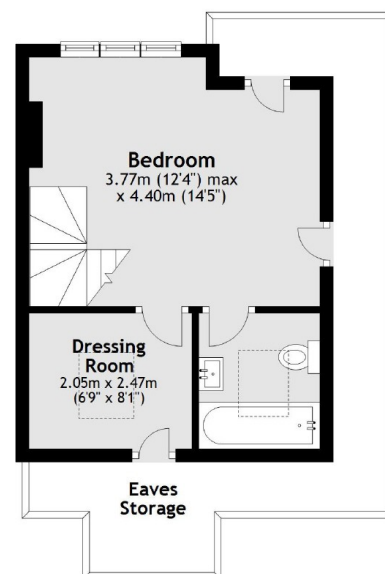
Ground Floor



First Floor



Second Floor



Total area: approx. 154.8 sq. metres (1666.7 sq. feet)