



Cholmeley Park, N6

£1,000 Per week

This spacious 1474 sq ft first floor apartment has a bright, dual aspect open plan living room, two double bedrooms and two sumptuous bathrooms.

Features

- Two Double Bedrooms
- Two Bathrooms
- Concierge
- Secure Parking
- Swimming Pool
- Gym



Cholmeley Park, London, N6

Furnival House is a luxury and unique development nestled in the heart of leafy Highgate with a concierge, gym, swimming pool, and spa.

These stunning apartments offer an abundance of space and light with oversized windows, large living spaces, bespoke Bulthaup kitchens and luxury bathrooms. The landscaped garden adds to the magnificent surroundings of this beautiful building.

Highgate Village is ideally placed for access to the City and West End, and the local restaurants and café culture along with the wide open spaces of Waterlow Park, Hampstead Heath and Kenwood located nearby. Highgate tube is within 0.4 mile.



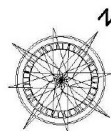
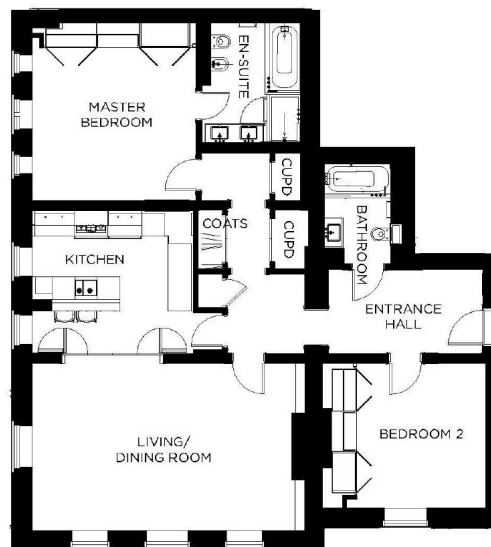
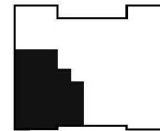


Cholmeley Park, London, N6

Apartment 7

2 Bedrooms – First Floor

Living/Dining Room	6.94m x 4.49m	22ft 9in x 14ft 9in
Kitchen	4.31m x 3.81m	14ft 2in x 12ft 6in
Master Bedroom	4.36m x 4.08m	14ft 5in x 13ft 5in
Bedroom 2	3.87m x 3.45m	12ft 9in x 11ft 4in
Total Area	136.9 sq m	1,474 sq ft



Contact

To arrange a viewing call our office on the number below or visit our website.



Energy Rating: B. We aim to make our particulars both accurate and reliable. However they are not guaranteed; nor do they form part of an offer or contract. If you require clarification on any points then please contact us, especially if you're traveling some distance to view. Please note that appliances and heating systems have not been tested and therefore no warranties can be given as to their good working order.