



Shepherds Hill, N6

£2,800,000

Dexters



Shepherds Hill, N6

An outstanding and rarely available detached double-fronted family home part a group of six houses constructed in the early 20th century by the church. This fine property is set back from the road with an exceptionally large, mature rear garden and outstanding views towards Muswell Hill.

Approached through a magical original panelled entrance hallway with fireplace, there is access to all major rooms. There are two formal reception rooms with herringbone parquet flooring, a kitchen breakfast room, utility room and direct access to the garage.

On the first floor there are four good size bedrooms, a large en suite, family bathroom with dual access and a separate wc. Scope for further house projects and extensions subject to any required consents and approvals. Including a large undeveloped loft space. A rare opportunity for heritage renovation.

Enviably located midway between Highgate Underground Station (0.5 miles away) and the bustling Broadway at Crouch End, there are a number of outstanding local schools, woodlands and parks within easy reach.

Features

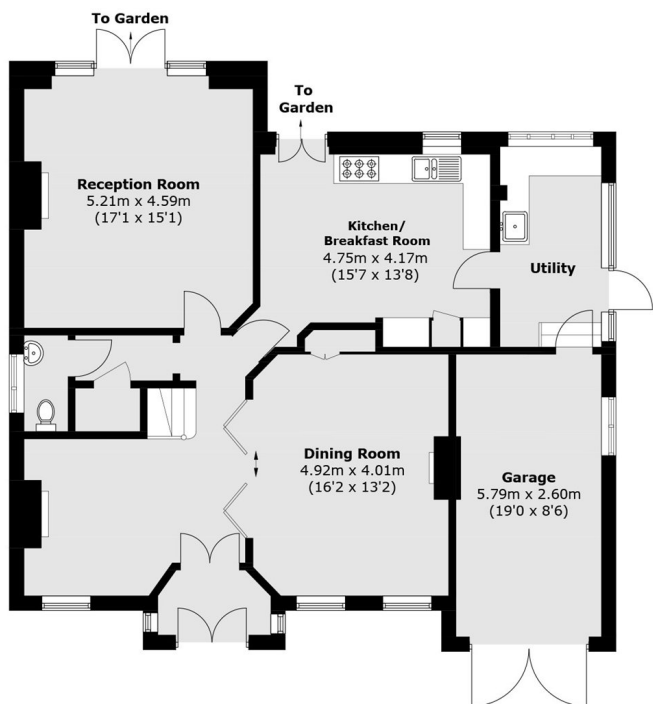
- Four Bedrooms
- Two Reception Rooms
- Kitchen Breakfast Room
- Exceptional Large Garden
- Garage & Further Parking
- Detached House



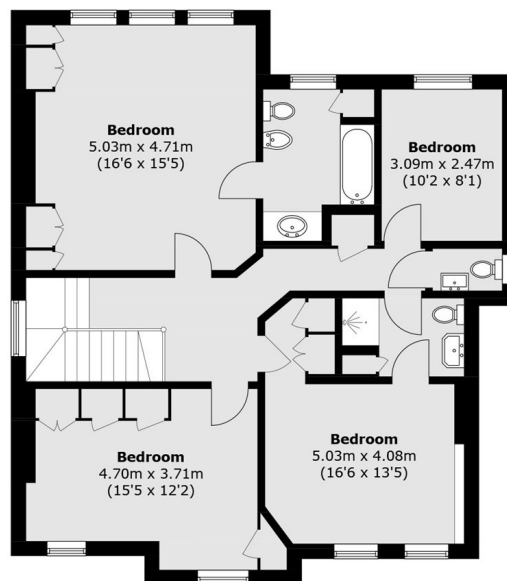




Shepherds Hill, London, N6



Ground Floor



First Floor

Total area (approx.): 215.5 sq. m (2,319.6 sq. ft)
(Including Garage)