



**Cholmeley Park, N6**

**£2,000,000**

**Dexters**



## Cholmeley Park, N6

This spacious first floor apartment has a bright, dual aspect semi - open plan living room with large sash windows, two double bedrooms and two sumptuous bathrooms.

Furnival House is a luxurious and unique development nestled in the heart of leafy Highgate Village with a concierge, gym, swimming pool, and spa.

This stunning apartments offers an abundance of space and light with oversized windows, large living spaces, bespoke Bulthaup kitchens and luxury bathrooms.

The superb development has a leisure centre with level deck swimming pool, sauna and steam room, air conditioned gymnasium and the landscaped garden adds to the magnificent surroundings of this beautiful building.

Highgate Village is ideally placed for access to the City and West End, and the local restaurants and café culture along with the wide open spaces of Waterlow Park, Hampstead Heath and Kenwood located nearby. Highgate tube is within 0.4 miles.

### Features

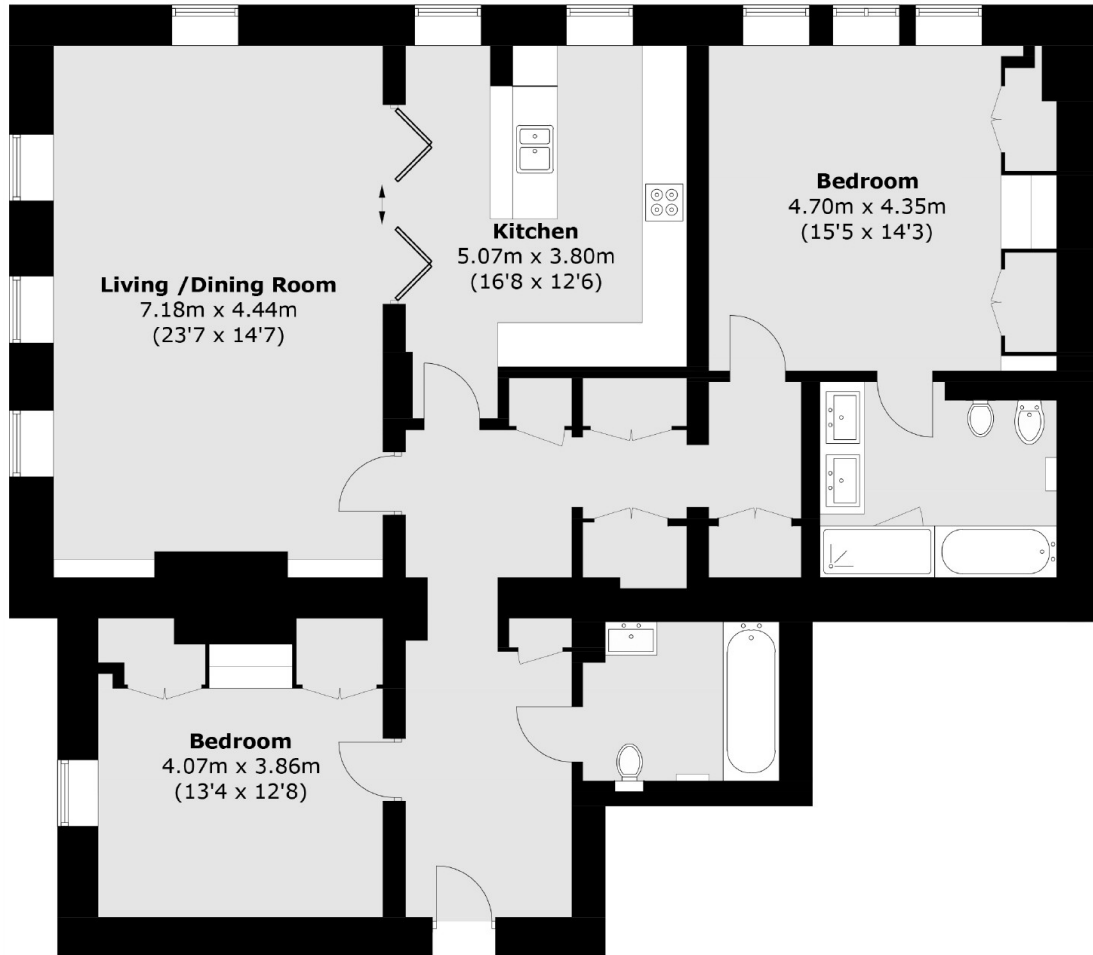
- Two Double Bedrooms
- Impressive Reception
- Two Bathrooms
- Swimming Pool
- Secure Parking
- Concierge







# Cholmeley Park, London, N6



Total area (approx.): 136.9 sq. m (1,474 sq. ft)