



Kentish Town, NW1

£3,850,000

In this prestigious Grade II listed terrace of spectacular Victorian houses, and approached via a private road set back from Oval Road, a substantial (circa 3,000 sq ft) terraced Victorian house.

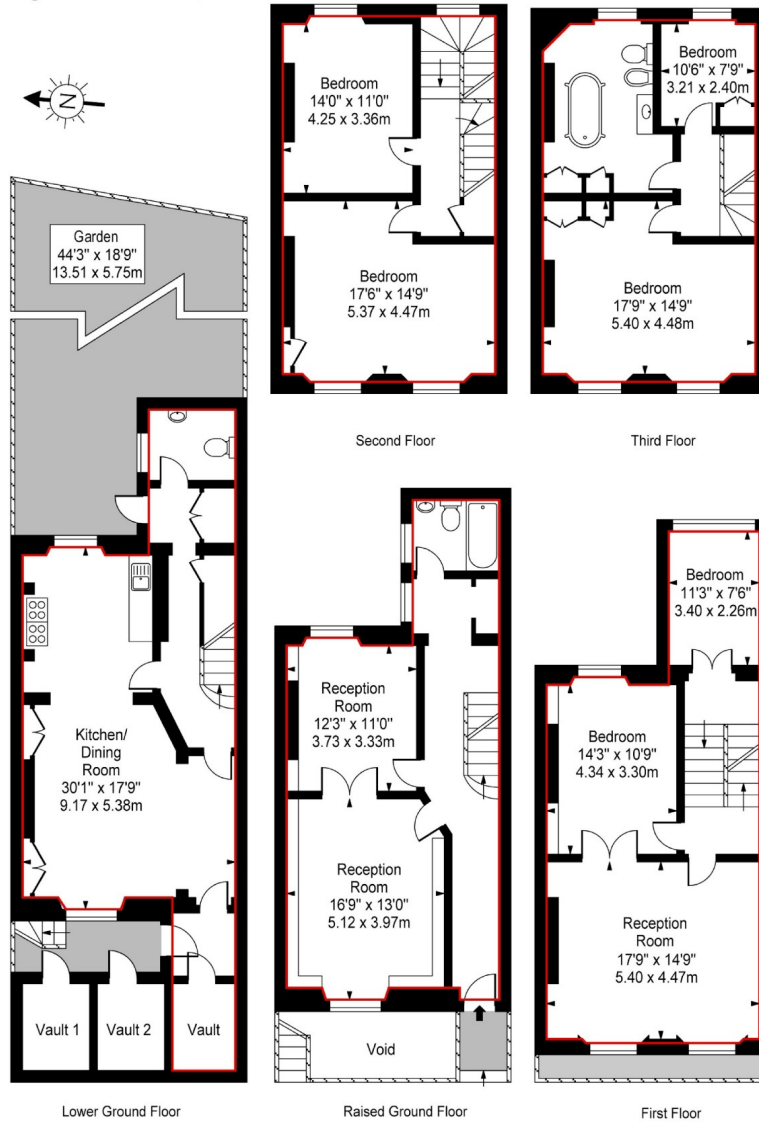
Regents Park Terrace is in a key position moments from the wonderful recreational areas of Regents Park and is close to all the facilities of both Camden Town and Primrose Hill.

Features

Three Reception Rooms
Kitchen/Dining Room
Six Bedrooms
Two Bathrooms
Three Vaults
Garden

Regents Park Terrace, London, NW1

Regents Park Terrace, NW1



Approximate Square Footage Within Red Line **2972 Sq Ft - 276.13 Sq M**

(Excluding Vault1 & Vault 2)

For Illustration Purposes Only - Not To Scale Floor Plan by www.nogaphotostudio.com Ref: No.35514

This floor plan should be used as a general outline for guidance only. Any intending purchaser or lessee should satisfy themselves by inspection, searches, enquiries and full survey as to the correctness of each statement. Any areas, measurements or distances quoted are approximate and should not be used to value a property or be the basis of any sale or let.

Contact

To arrange a viewing call our office on the number below or visit our website.



Energy Rating: F. We aim to make our particulars both accurate and reliable. However they are not guaranteed; nor do they form part of an offer or contract. If you require clarification on any points then please contact us, especially if you're traveling some distance to view. Please note that appliances and heating systems have not been tested and therefore no warranties can be given as to their good working order.