



Ascham Street, NW5

£1,750,000

Dexters



Ascham Street, NW5

This stunning freehold Victorian family home has been renovated to a very high standard throughout. The property is arranged over three floors and is situated on one of the most desirable roads in Kentish Town.

As you enter the house you are met with a 27' reception room with lovely wood flooring. Towards the rear of the house there is a modern fully fitted kitchen / dining room that has lots of natural light via a large skylight and has sliding doors leading out to a beautiful garden with a full functioning studio at the back.

The upper floors consist of three double bedrooms, a family bathroom and an en-suite marble bathroom to the master bedroom with a walk-in wardrobe.

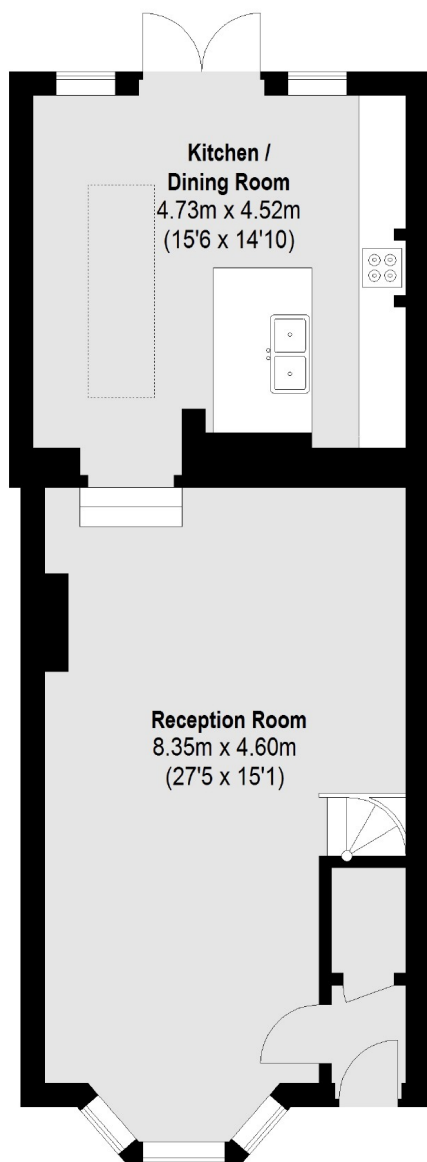
Ascham Street is well situated for Kentish Town and Tufnell Park stations (Northern Line), as well as Eleanor Palmer Primary School (Ofsted rating Outstanding), Camden School for Girls, local cafes, shops, pubs and restaurants. Hampstead Heath is approximately 0.8 miles walk away.

Features

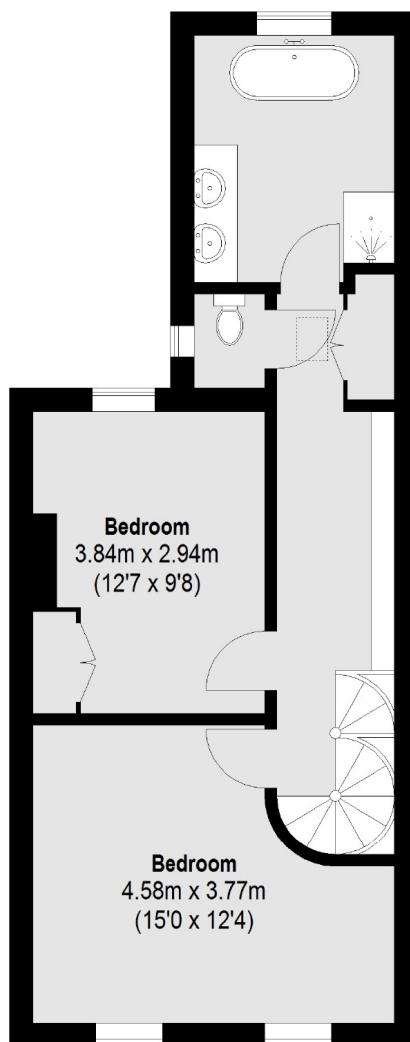
- Three Double Bedrooms
- Excellent Condition
- Private Garden
- Freehold
- Outhouse / Studio
- Two Bathrooms



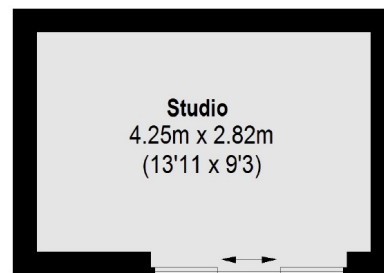
Ascham Street, London, NW5



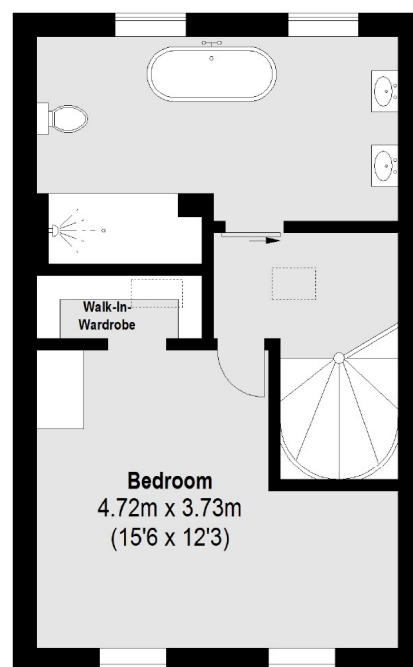
Ground Floor



First Floor



Outbuilding
(Not Shown In Actual
Location / Orientation)



Second Floor

Total area (approx.): 144.48 sq. m (1555 sq. ft)
Outbuilding: 12.4 sq. m (133 sq. ft)