



Jamestown Road, NW1
£1,250,000

Dexters



Jamestown Road, NW1

On the fifth and sixth floors in this highly sought after block in the heart of Camden is this three bedroom, three bathroom split-level apartment, measuring approximately 1,422 sq.ft.

On the fifth floor, you will find an impressive open plan kitchen/reception room with high-ceilings, complemented by a private terrace overlooking the canal.

The sixth floor offers two spacious double bedrooms, each accompanied by its own bathroom. The principal bedroom enjoys the added luxury of access to a second large private terrace.

Gilbey House, formerly a gin warehouse, is one of the premier blocks in Camden. It is very well-located to take advantage of the excellent local amenities. Both Primrose Hill Village and Regent's Park are in very close proximity.

Features

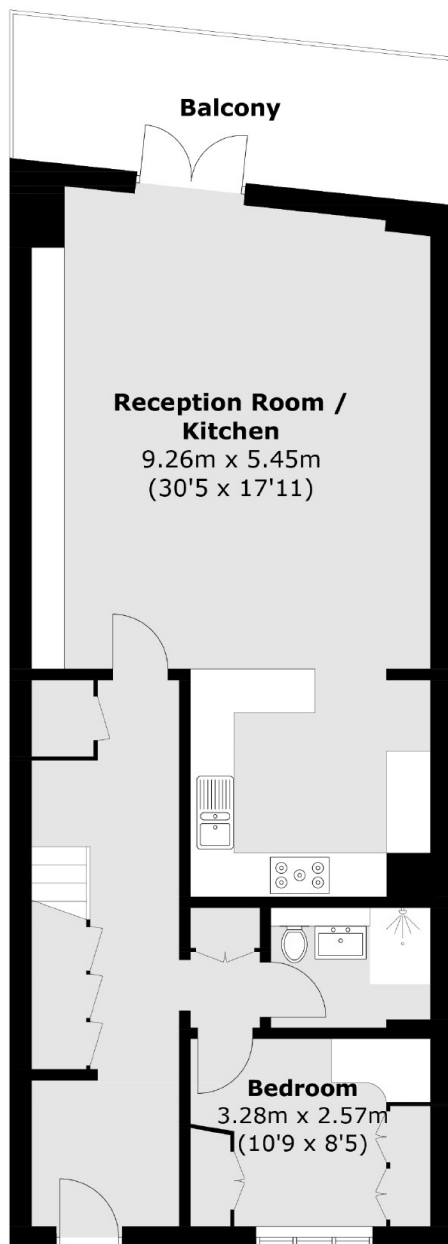
- Three Bedrooms
- Three Bathrooms
- Two Private Terraces
- Chain Free
- Porter and Gym
- Secure Underground Parking



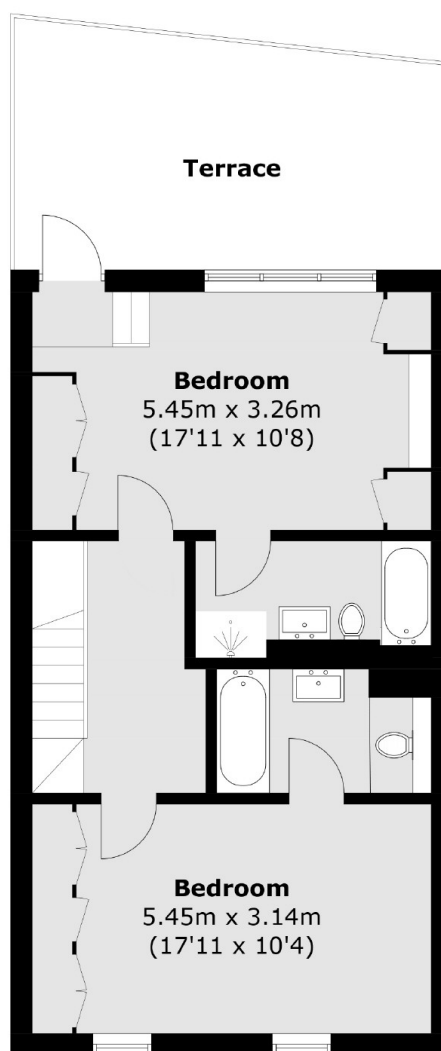




Jamestown Road, London, NW1



Fifth Floor



Sixth Floor

Total area (approx.): 132.1 sq. m (1421.9 sq. ft)
Balcony: 30.3 sq. m (326 sq. ft)