



Holmes Road, NW5

£4,450,000

A stunning four bedroom new build penthouse in Kentish Town with direct views over London's skyline. The apartment has been finished to a high standard boasting four spacious bedrooms all with en-suites, a large open reception room including a stylish kitchen plus an impressive triple aspect terrace with fabulous views over London.

Holmes Road is located within easy reach of the Northern line via Kentish Town Station as well as being in close proximity to the local amenities and open spaces of Regents Park and Hampstead Heath.

Features

- Penthouse
- Four Bedrooms
- Concierge
- Large Balcony
- Approximately 3,308 Sq.Ft
- Modern Design



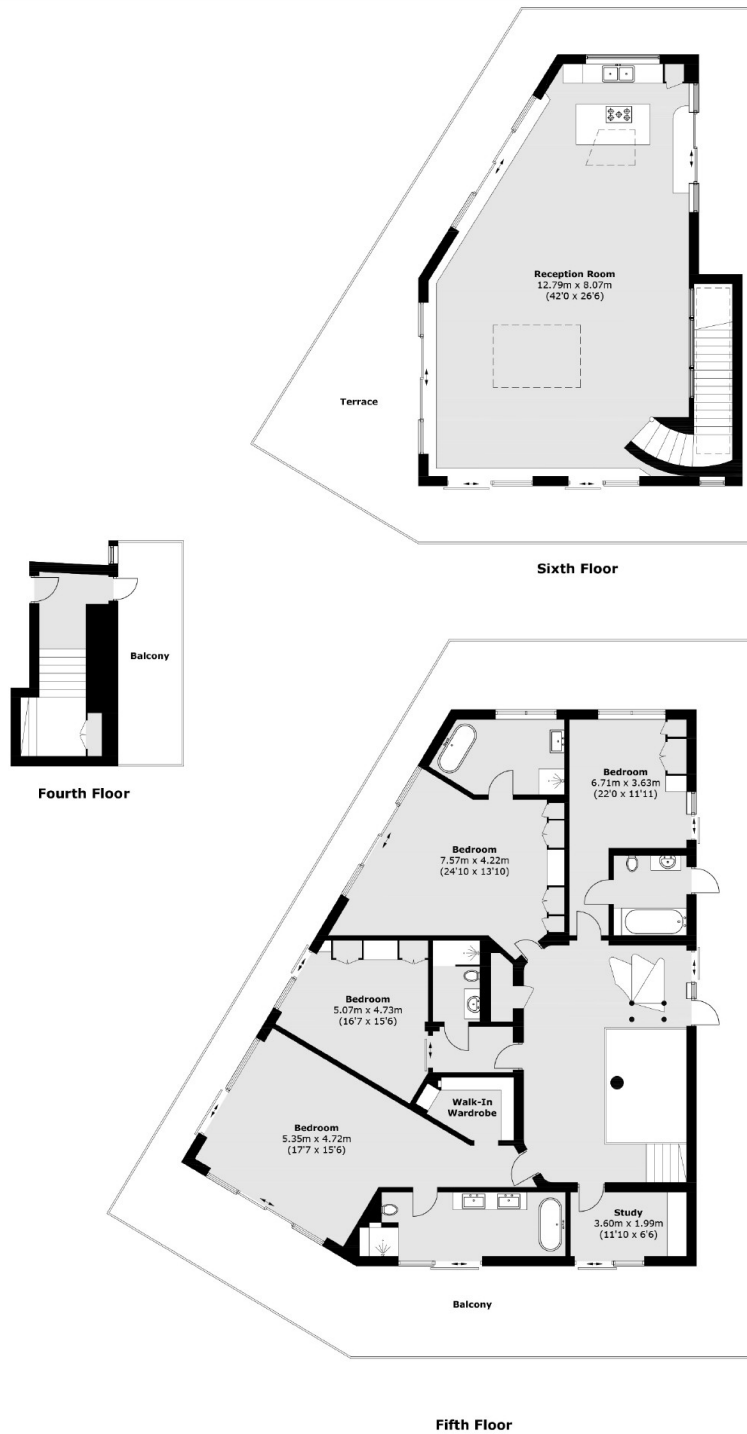
Holmes Road, NW5

The unique property boasts an abundance of natural light with meticulous refurbishment throughout including parquet flooring, a cast iron feature staircase and quality fixtures and fittings.

On the top floor is a large stylish high-specification kitchen with a generous open plan living area and access to one of two large wrap around balconies, perfect for entertaining. A bespoke iron staircase leads down to a spacious hall plus four spacious bedrooms all ensuite bathrooms plus access to the second balcony.



Holmes Road, London, NW5



Total area (approx.): 307.4 sq. m (3,308.9 sq. ft)
Balcony & Terrace: 224.5 sq. m (2,416.5 sq. ft)

Dexters

Kentish Town & Camden
274 Kentish Town Road
London
NW5 2AA
Sales
020 7483 6390

Energy Rating: B. We aim to make our particulars both accurate and reliable. However they are not guaranteed; nor do they form part of an offer or contract. If you require clarification on any points then please contact us, especially if you're traveling some distance to view. Please note that appliances and heating systems have not been tested and therefore no warranties can be given as to their good working order.

 **RICS** | Regulated
Estate Agent
and Letting Agent

[dexters.co.uk](https://www.dexters.co.uk)