



Oseney Crescent, NW5

£975,000

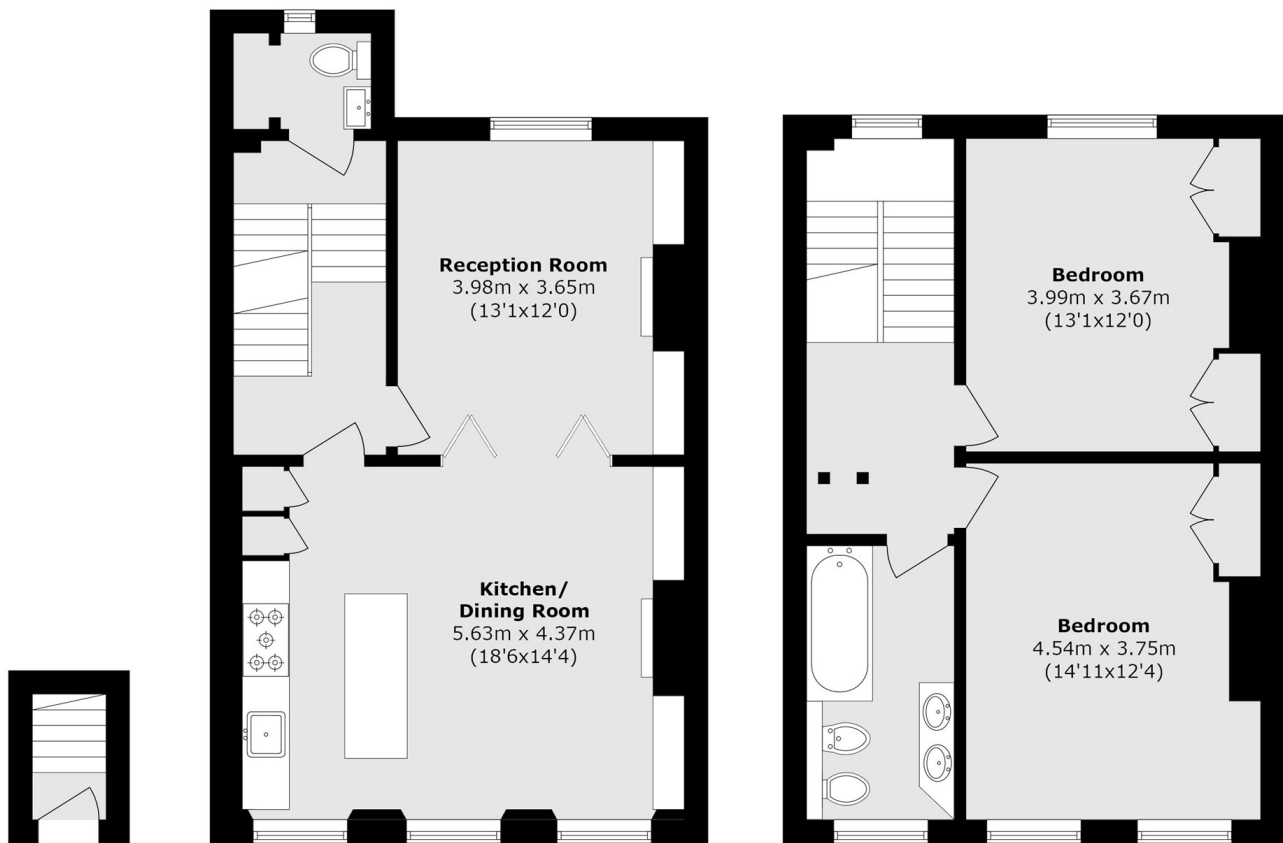
A beautiful two double bedroom split-level apartment with wood floors and impressive high-ceilings throughout. The apartment has a stunning modern kitchen/dining room and a separate reception room.

Oseney Crescent is one of the area's most sought after roads. Hampstead Heath and Primrose Hill are just a short walk away, as are excellent transport links at Kentish Town (Northern line, Overground and Thameslink).

Features

- Two Double Bedrooms
- Fantastic Condition
- Leasehold
- Chain Free
- One Bathroom
- Great Location

Oseney Crescent, London, NW5



Ground Floor

First Floor

Second Floor

Total area (approx.): 103.7 sq. m (1116.2 sq. ft)