



## Draycott Place, SW3

£3,500

SHORT LET. A fantastic split level flat on the first and second floors in this beautiful red brick building. The flat has three large bedrooms, three bathrooms, two reception rooms and direct lift access.

Parallel to the Kings Road and only a couple of streets from Sloane Square there really is plenty to get up to be it shopping in Peter Jones or grabbing some food on Duke of York Square.

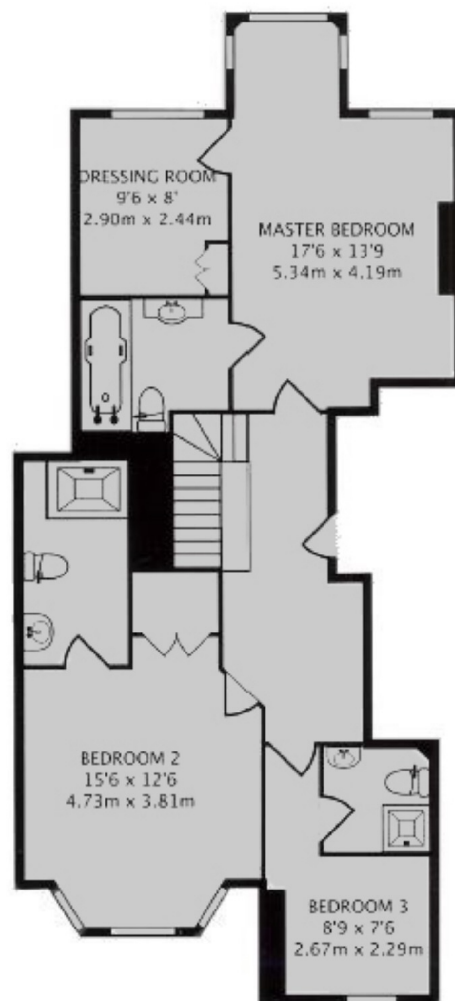
### Features

- All Bills Inclusive
- Three Bedrooms
- Four Bathrooms
- First and Second Floor
- Red Brick Period Building
- Popular Location

## Draycott Place, London, SW3



**FIRST FLOOR**  
**GROSS INTERNAL FLOOR AREA**  
**809 SQ FT/75.23 SQ M**



**SECOND FLOOR**  
**GROSS INTERNAL FLOOR AREA**  
**840 SQ FT/78.04 SQ M**

### Contact

To arrange a viewing call our office on the number below or visit our website.



Energy Rating: . We aim to make our particulars both accurate and reliable. However they are not guaranteed; nor do they form part of an offer or contract. If you require clarification on any points then please contact us, especially if you're traveling some distance to view. Please note that appliances and heating systems have not been tested and therefore no warranties can be given as to their good working order.