



Gloucester Avenue, NW1

£3,000 Per week

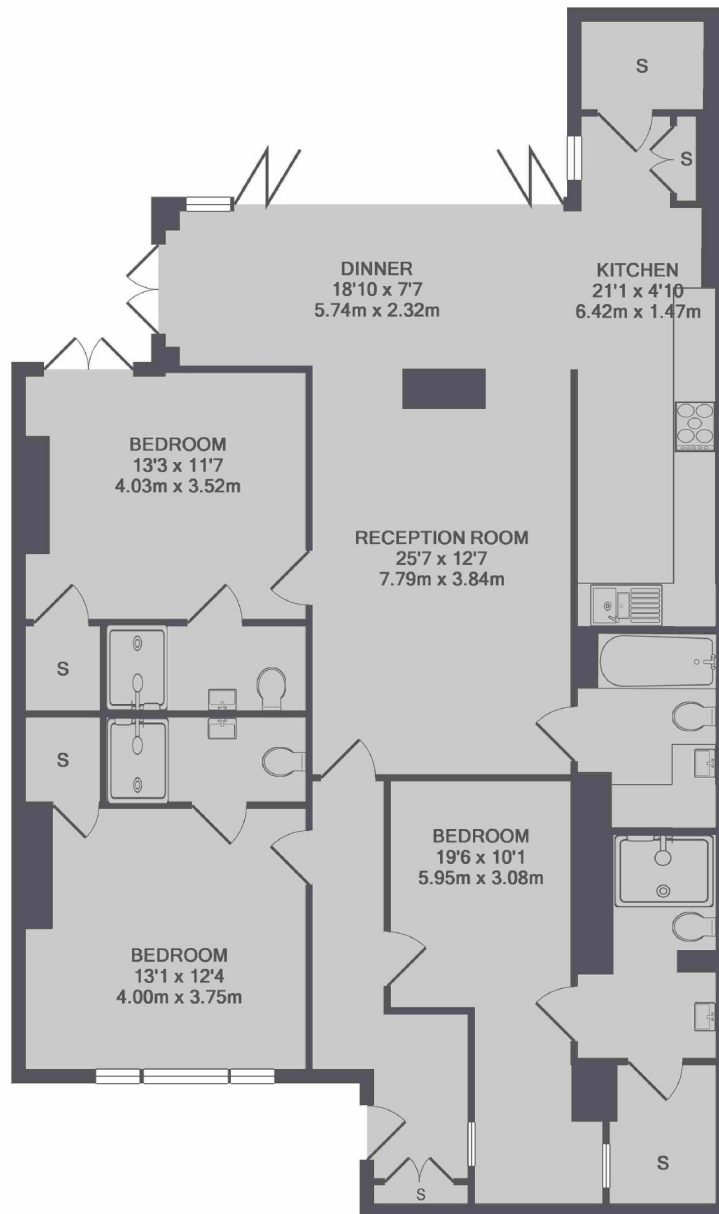
SHORT LET. A modern three bedroom, four bathroom ground floor flat located on Gloucester Avenue. With outside space and access to multi-room audio, a fully-equipped kitchen, wooden flooring and a steam room.

On the edge of Primrose Hill, this property has easy access to shops, bars, restaurants and 0.3miles to Camden station and Chalk Farm underground station is also 0.4miles away.

Features

SHORT LET
All Bills Inclusive
Contemporary
Multi Room Audio
Modern Kitchen
Steam Room

Gloucester Avenue, London, NW1



TOTAL APPROX. FLOOR AREA 1368 SQ.FT. (127.1 SQ.M.)

Contact

To arrange a viewing call our office on the number below or visit our website.



Energy Rating: D. We aim to make our particulars both accurate and reliable. However they are not guaranteed; nor do they form part of an offer or contract. If you require clarification on any points then please contact us, especially if you're traveling some distance to view. Please note that appliances and heating systems have not been tested and therefore no warranties can be given as to their good working order.