



Canonbury Square, N1

£625 Per week

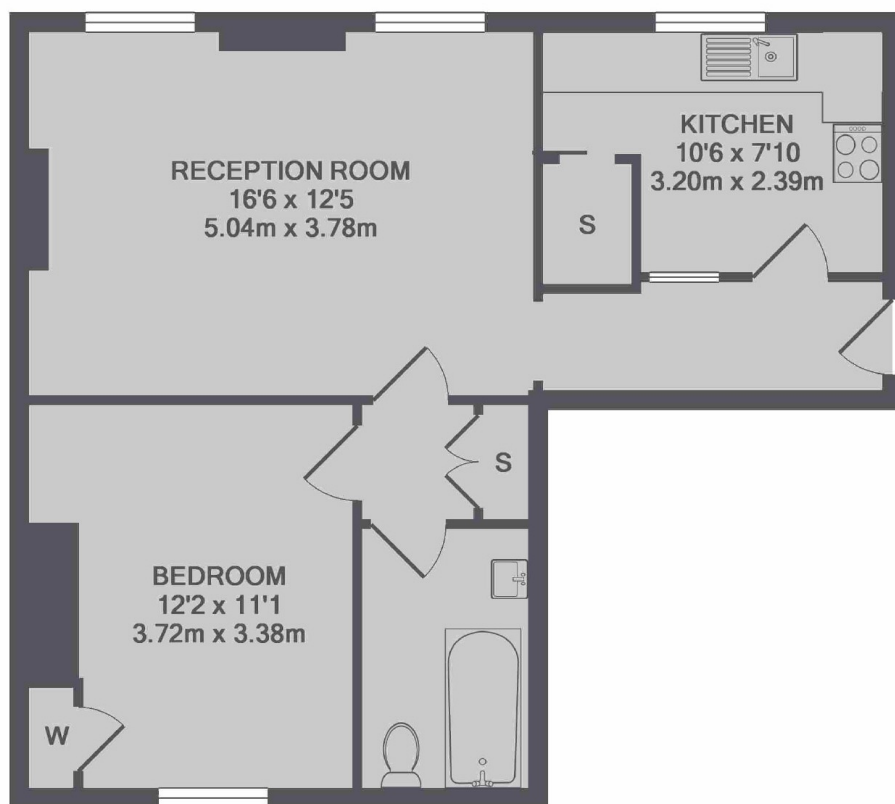
SHORT LET. A spacious one bedroom garden apartment on a fantastic garden square. The property has high ceilings with lots of light and there's access to a large communal garden to the rear.

Canonbury Square is just off Upper Street which has a great range of shops, restaurants and cafes. Highbury and Islington station is less than 300m away.

Features

SHORT LET
All Bills Inclusive
Private Garden
Separate Kitchen
One Bedroom
Great Location

Canonbury Square, London, N1



TOTAL APPROX. FLOOR AREA 578 SQ.FT. (53.7 SQ.M.)

Contact

To arrange a viewing call our office on the number below or visit our website.



Energy Rating: D. We aim to make our particulars both accurate and reliable. However they are not guaranteed; nor do they form part of an offer or contract. If you require clarification on any points then please contact us, especially if you're traveling some distance to view. Please note that appliances and heating systems have not been tested and therefore no warranties can be given as to their good working order.