

## Strype Street, E1

£795 Per week

SHORT LET. This light and airy one bedroom warehouse style apartment on the third floor of a desirable building, within walking distance to Spitalfields and the City and local bars/restaurants.

Close to Liverpool Street and Aldgate stations and many local amenities near by.

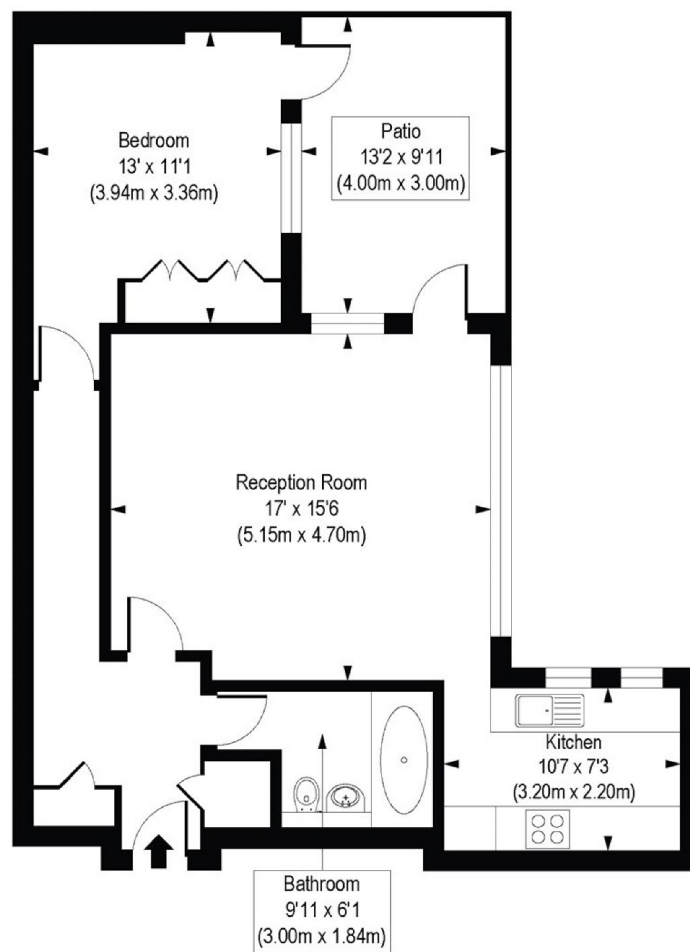
### Features

SHORT LET  
All Bills Inclusive  
Modern Warehouse Style  
Outside Space  
Close To The City  
Light

## Strype Street, London, E1

Wexner Building, E1

Approx. Gross Internal Floor Area 657 sq. ft / 61.02 sq. m



Third Floor

COMPLIANT WITH RICS CODE OF MEASURING PRACTICE. Floorplan is for illustrative purposes only and is not to scale. Every attempt has been made to ensure the accuracy of the floorplan shown, however all measurements, fixtures, fittings and data shown are an approximate interpretation for illustrative purposes only. Liability for errors, omissions or mis-statement through negligence or otherwise is hereby excluded.

### Contact

To arrange a viewing call our office on the number below or visit our website.



Energy Rating: D. We aim to make our particulars both accurate and reliable. However they are not guaranteed; nor do they form part of an offer or contract. If you require clarification on any points then please contact us, especially if you're traveling some distance to view. Please note that appliances and heating systems have not been tested and therefore no warranties can be given as to their good working order.