



Boston Gardens, TW8
£2,475,000



Boston Gardens, TW8

"Dorincourt" is an outstanding detached family house set on a beautifully landscaped plot adjacent to Boston Manor Park.

On arrival you will be impressed with the dual access gated driveway with ample parking. The smart porch leads to a wide reception hall. There is a formal reception room for relaxation before you find the show-stopper kitchen/dining room/family room which features four sets of bi-fold doors. A utility room, storage room and ground floor shower room completes the ground floor.

The first floor provides four double bedrooms served by a stylish bathroom with the second floor dedicated to a principal bedroom suite with bathroom and a South-West facing balcony.

Amongst the many extra features there is a two storey outbuilding suitable for many purposes separate from the main building.

Offered chain free, this is an opportunity to acquire a substantial residence in this desirable West London neighbourhood.

Features

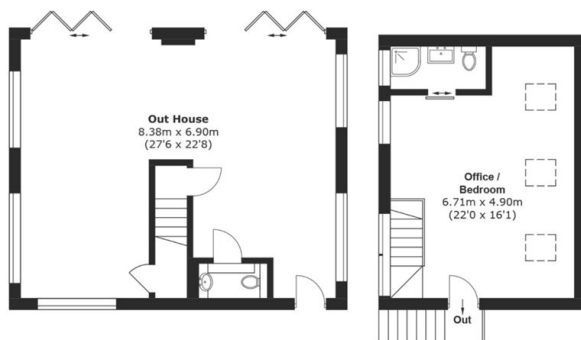
- Detached Residence
- Exceptional Condition
- Close to Tube and M4
- Fantastic Gardens
- Two Storey Annex
- No Onward Chain







Boston Gardens, Brentford, TW8



Outbuilding - Ground Floor

Outbuilding - First Floor



Ground Floor

First Floor

Second Floor

Total area (approx.): 321.6 sq. m (3,461.7 sq. ft)
 Outbuilding (approx.): 91.9 sq. m (989.2 sq. ft)
 Balcony (approx.): 4.4 sq. m (47.4 sq. ft)