



Anson Road, NW2

£646 Per week

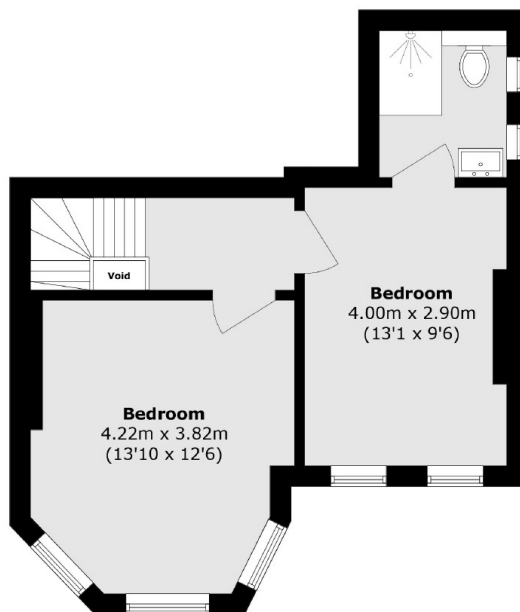
This newly refurbished two bedroom, two bathroom flat is spread over two floors. The property has well sized bedrooms, one primary with an en-suite shower room, a spacious open plan reception with a modern integrated kitchen, and a private front and rear garden.

Anson Road is located close to Gladstone Park, the Mapesbury Dell and a variety of local amenities. There is good transport links with Cricklewood Thameslink, Willesden Green, and Kilburn Station nearby.

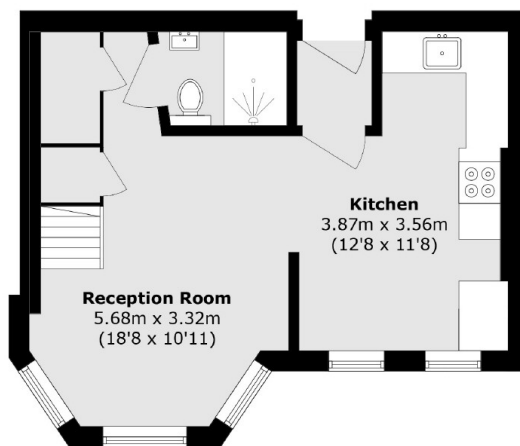
Features

- Two Bedrooms
- Open Plan
- Integrated Kitchen
- Two Bathrooms
- Period Features
- Front and Rear Garden

Anson Road, London, NW2



First Floor



Ground Floor

Total area (approx.): 70.6 sq. m (759.9 sq. ft)