



Dawson Road, NW2

£1,800,000

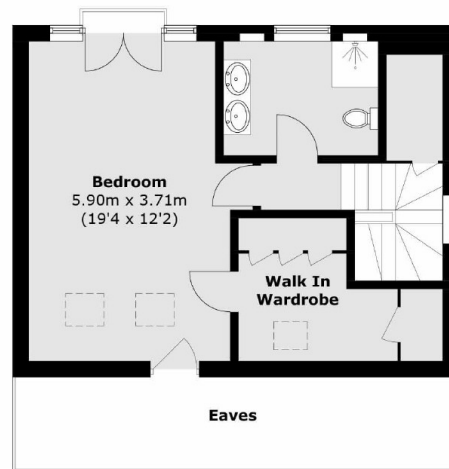
A beautifully presented five bedroom, two bathroom semi-detached family home. Arranged over three floors, the property offers an impressive mix of natural light and stylish living space.

Dawson Road is located close Gladstone Park and to many local amenities, delis, shops, and cafés. There are good transport links with Willesden Green station, Dollis Hill station, and Cricklewood Thameslink nearby.

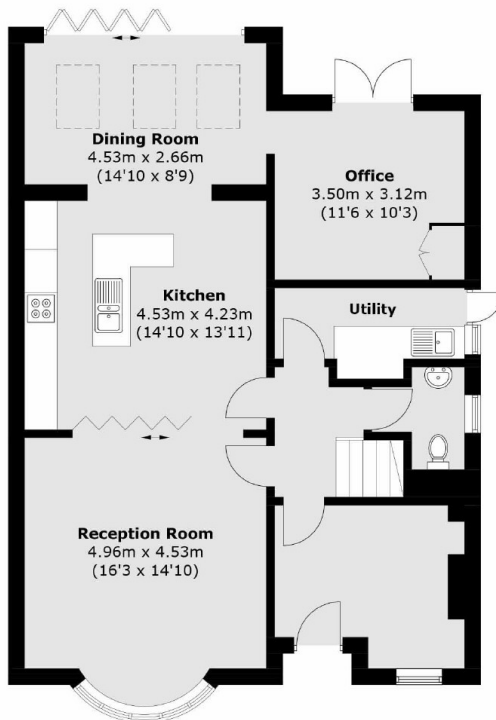
Features

- Semi-Detached House
- Five Bedrooms
- Two Bathrooms & Guest WC
- Driveway For Multiple Cars
- Excellent Condition Throughout
- Chain Free

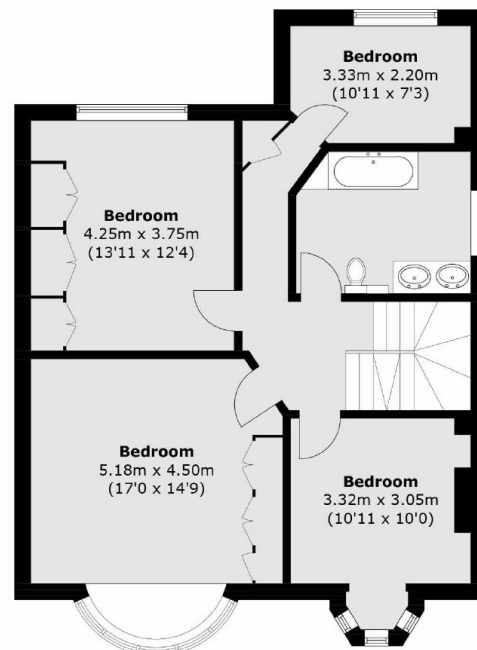
Dawson Road, London, NW2



Second Floor



Ground Floor



First Floor

Total area (approx.): 213.6 sq. m (2,299.1 sq. ft)
(Excluding Eaves / Void)