

King's Quay, SW10

£4,995 Per week

A truly stunning harbour and riverside penthouse in the sought after and prestigious Chelsea Harbour development. This impressive apartment spans in excess of 5100sqft with almost 2500sqft of lateral living space.

The mainline station at Imperial Wharf provides direct rail links to Clapham Junction, Shepherds Bush (for the Central line and Westfield shopping centre) and West Brompton. The River bus service at Chelsea Harbour Pier provides transport during peak hours to Putney and Blackfriars Millennium Pier.

Features

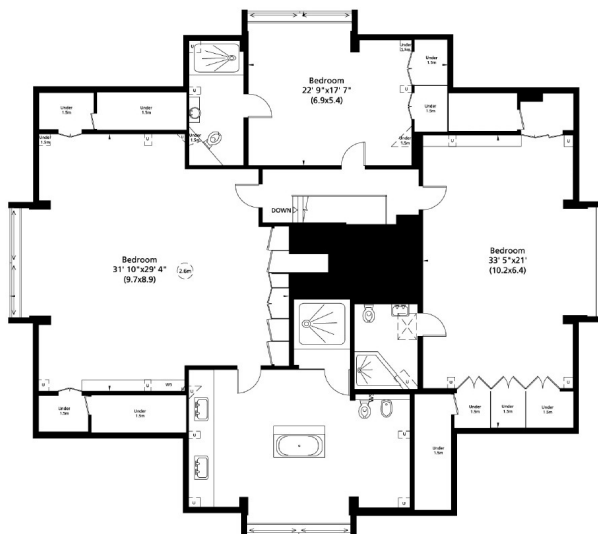
- Penthouse
- Four Double Bedrooms
- River Views/Harbour Views
- Porter
- Two Parking Spaces
- Chelsea Harbour

King's Quay, London, SW10

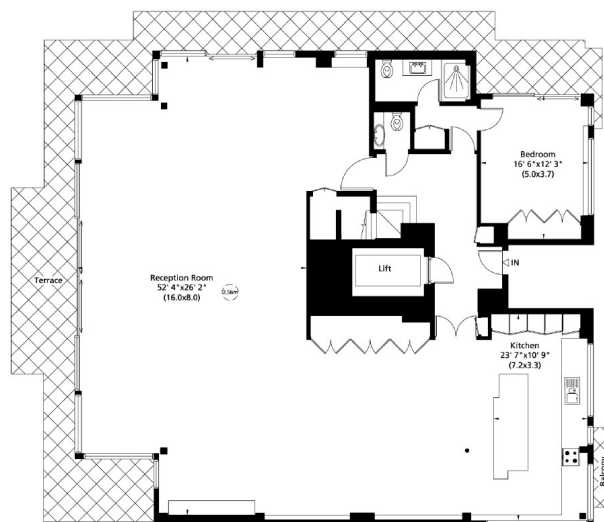
KINGS QUAY CHELSEA HARBOUR LONDON SW10

Gross internal area (approx.)
511 Sq m (5499 Sq ft) Including Under 1.5m
477 Sq m (5131 Sq ft) Excluding Under 1.5m

Terrace area (approx.)
62 Sq m (668 Sq ft)



Sixth Floor



Fifth Floor

Not to scale, for guidance only and must not be relied upon as a statement of fact. All measurements and areas are approximate only (and have been prepared in accordance with the current edition of the RICS Code of Measuring Practice).

Floor Plan by Capital Group 020 8011 7722

Contact

To arrange a viewing call our office on the number below or visit our website.



Energy Rating: C. We aim to make our particulars both accurate and reliable. However they are not guaranteed; nor do they form part of an offer or contract. If you require clarification on any points then please contact us, especially if you're traveling some distance to view. Please note that appliances and heating systems have not been tested and therefore no warranties can be given as to their good working order.