



King's Quay, SW10

£2,000 Per week

Dexters



King's Quay, SW10

An exceptional, interior designed three bedroom apartment covering 1,453 sq ft benefiting from wonderful south westerly views over the marina. This beautifully presented apartment is available on a fully furnished basis and includes a designated underground parking space.

As you enter the property you are welcomed by a generous living area which comprises a large reception room, kitchen, and dining area.

One of Chelsea's most prestigious developments with beautiful river views. The property is close to the shops and restaurants of Imperial Wharf and Kings Road.

Features

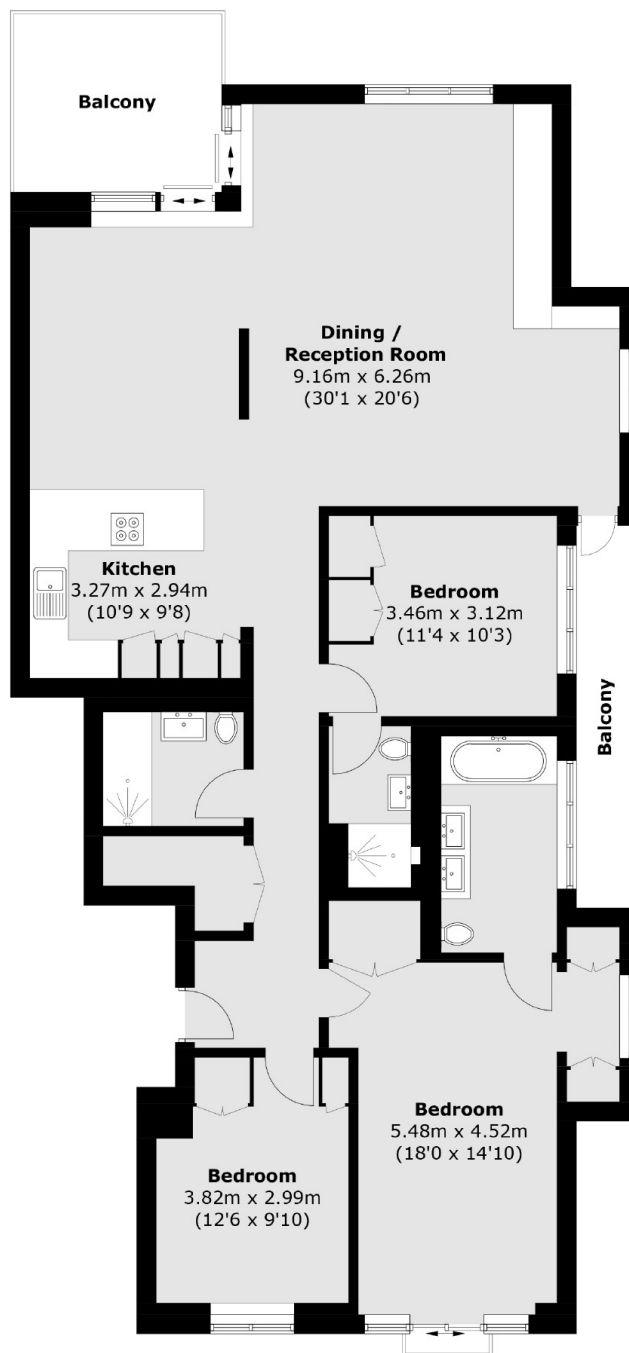
- Three Bedrooms
- Three Bathrooms
- Terrace
- 24-Hour Concierge
- One Parking Space
- Harbour Views







King's Quay, London, SW10



Third Floor

Total area (approx.): 135.7 sq. m (1,460.7 sq. ft)
Balcony area: 14.4 sq. m (155.0 sq. ft)