



## Juniper Drive, SW18

£1,084 Per week

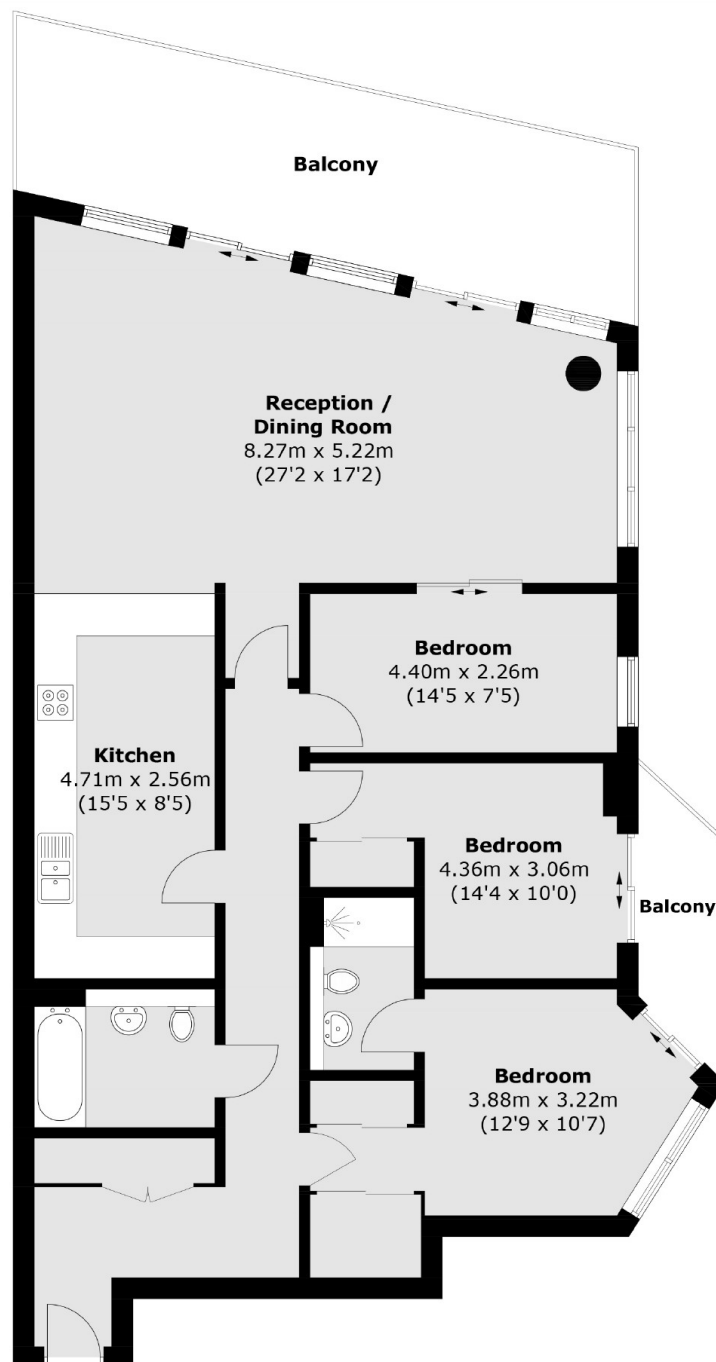
A beautiful three bedroom two bathroom apartment with incredible river views within the popular Battersea Reach development, offering spacious contemporary living accommodation, tastefully interior designed to a high standard with a private terrace.

Battersea Reach is an award-winning riverside development, located moments from the transport links of Wandsworth Town & Clapham Junction. Residents benefit from 24-hour concierge & an exclusive gym, as well as on-site amenities like Tesco Express, Young's Bar & Restaurant, Cake Boy Patisserie Café, yue float wellness centre, healthcare clinic & beauty salon.

### Features

- Three Bedrooms
- Two Bathrooms
- 24hr Concierge
- Parking Space
- River Views
- Gym

# Juniper Drive, London, SW18



Total area (approx.): 118.7 sq. m (1,277.7 sq. ft)  
Balcony : 25.8 sq. m (277.7 sq. ft)