



Thames Quay, SW10

£6,999 Per week

An exceptional, five double bedrooms interior-designed, 5th & 6th floor riverside penthouse that has been decorated in monochrome colours throughout with direct river views.

This riverside development is close to Chelsea's antique district on Lots Road as well as Imperial Wharf and Kings Road.

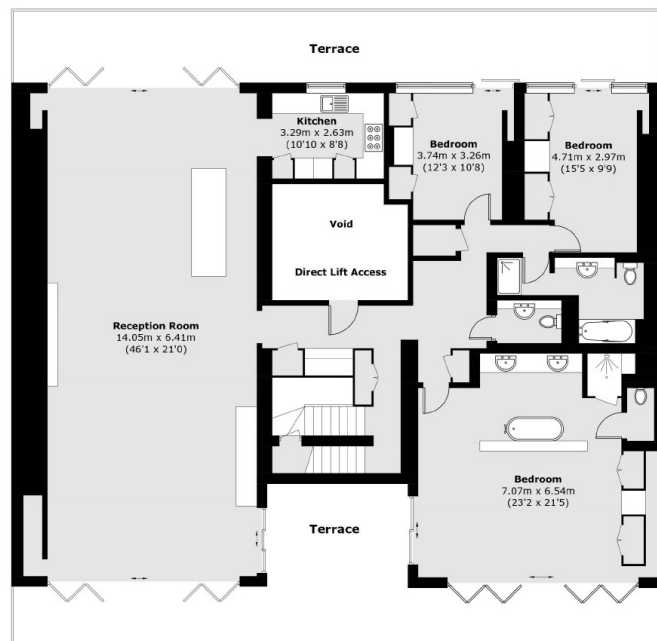
Features

- Penthouse
- Five Double Bedrooms
- River Views
- Porter
- Parking Space
- Chelsea Harbour

Thames Quay, London, SW10



Seventh Floor



Sixth Floor

Total area (approx.): 372.7 sq. m (4,011.6 sq. ft)
(Excluding Voids)

Terrace area (approx.): 84.8 sq. m (912.8 sq. ft)