



## Thames Quay, SW10

£12,000 Per week

**SHORT LET:** An exceptional, five double bedrooms interior-designed, 5th & 6th floor riverside penthouse that has been decorated in monochrome colours throughout with direct river views.

This riverside development is close to Chelsea's antique district on Lots Road as well as Imperial Wharf and Kings Road.

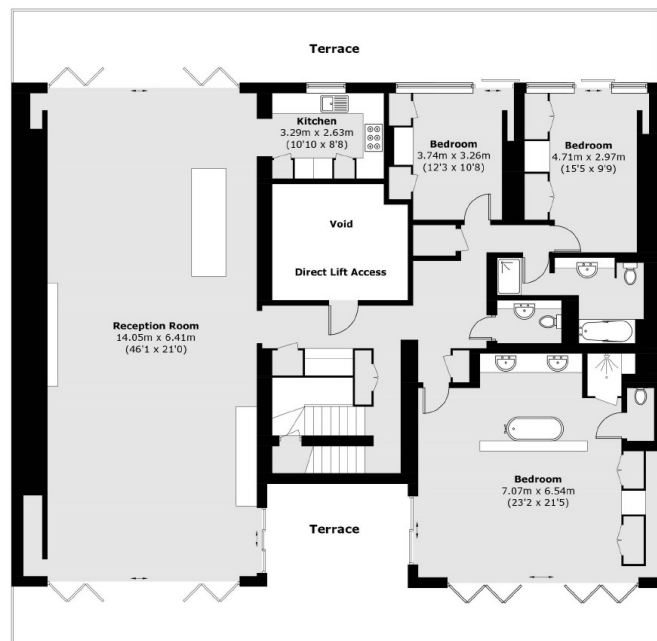
### Features

- Bills Included
- Five Double Bedrooms
- River Views
- Porter
- Parking Space
- Chelsea Harbour

# Thames Quay, London, SW10



**Seventh Floor**



**Sixth Floor**

Total area (approx.): 372.7 sq. m (4,011.6 sq. ft)  
(Excluding Voids)

Terrace area (approx.): 84.8 sq. m (912.8 sq. ft)