



York Place, SW11

£750 Per week

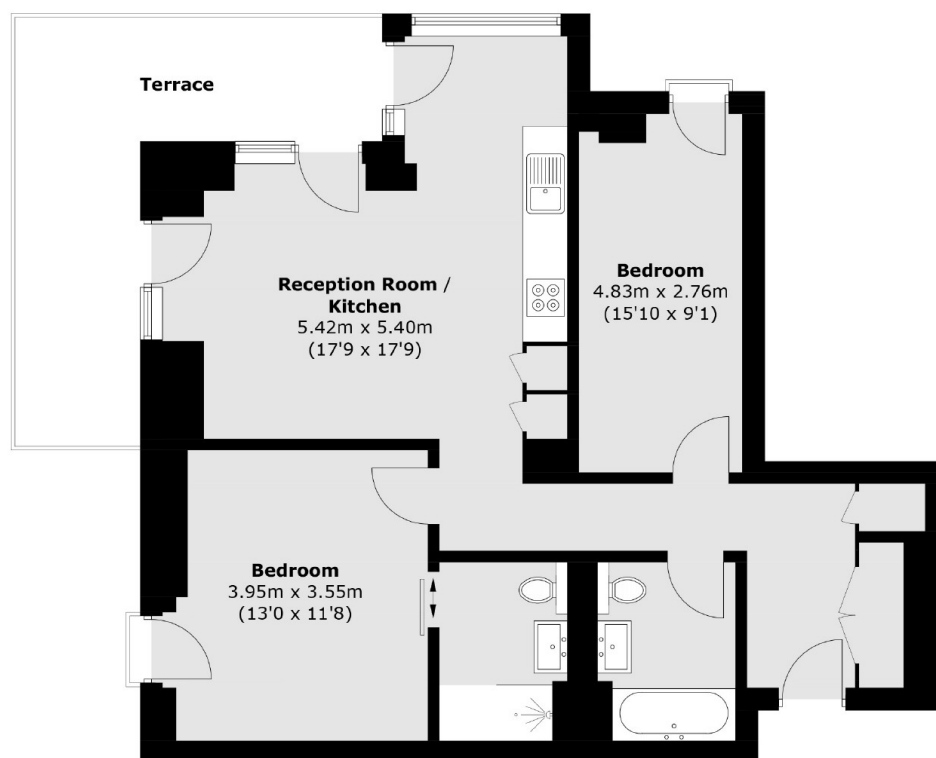
A stunning two bedroom apartment in a brand new development in Battersea (Coda Residences).

Coda Residences is located in the heart of Battersea with remarkable transport links such as the Uber Boat by Thames Clippers and Clapham Junction with access to Gatwick Airport.

Features

Two Bedrooms
Two Bathrooms
24hr Concierge
Private Balcony
Gym
Furnished

York Place, London, SW11



Fifth Floor

Total area (approx.): 72.5 sq. m (780.4 sq. ft)
Terrace: 15.0 sq. m (161.5 sq. ft)