



## Central Avenue, SW6

£784 Per week

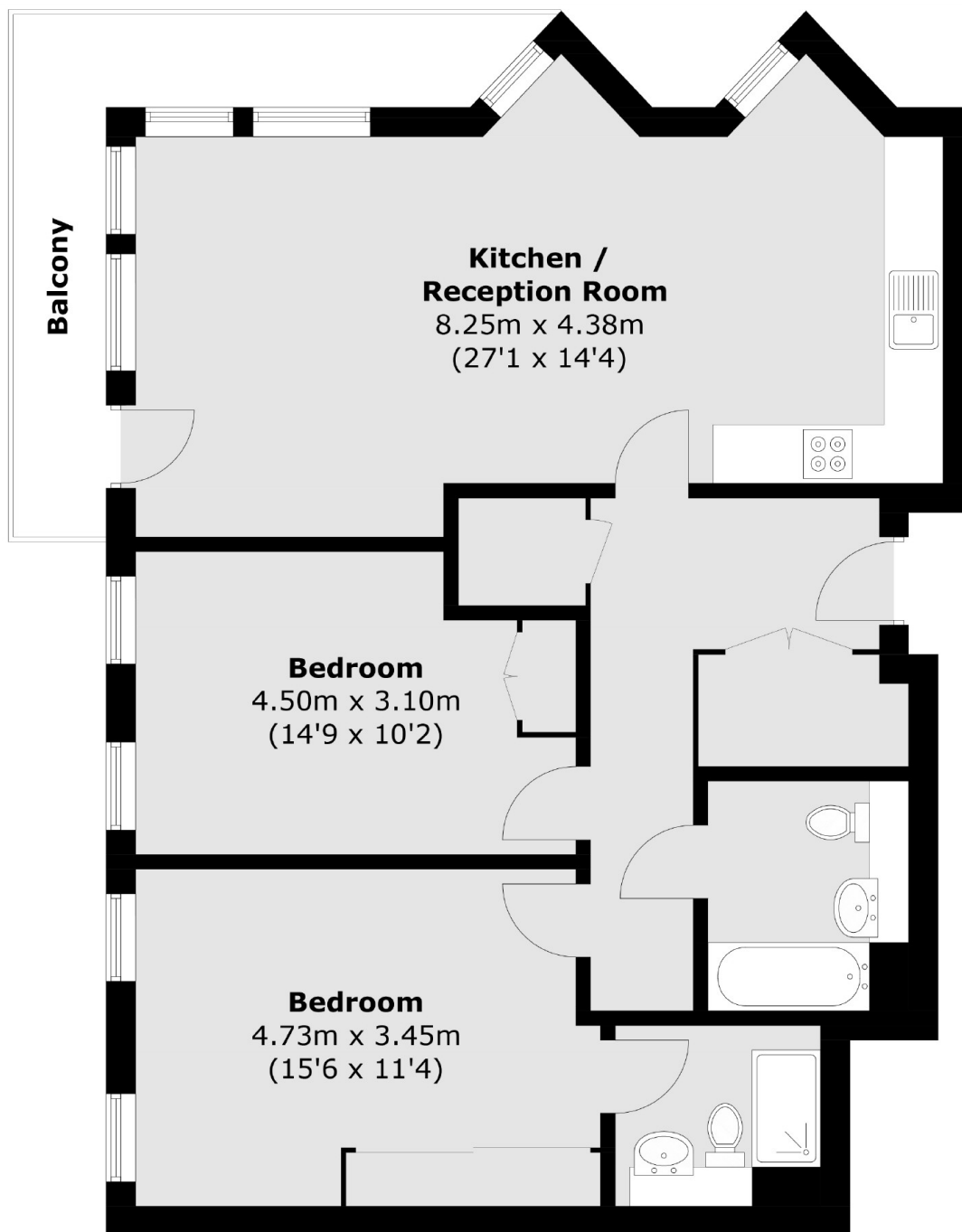
A well presented two double bedroom apartment set in the desirable Fulham Riverside development, which benefits from landscaped communal gardens, gym access and 24-hour concierge.

Fulham Riverside is perfectly located between South Park and Imperial Park, moments away from amenities such as Sainsburys, local cafés and restaurants and the prestigious Hurlingham Club.

### Features

- Two Double Bedrooms
- Riverside Development
- Landscaped Gardens
- Two Bathrooms
- 24 Hour Concierge
- Gym Access

# Central Avenue, London, SW6



Total area (approx.): 86.9 sq. m (935.4 sq. ft)  
Balcony area (approx.): 9.0 sq. m (96.9 sq. ft)