



Thames Quay, SW10

£1,119 Per week

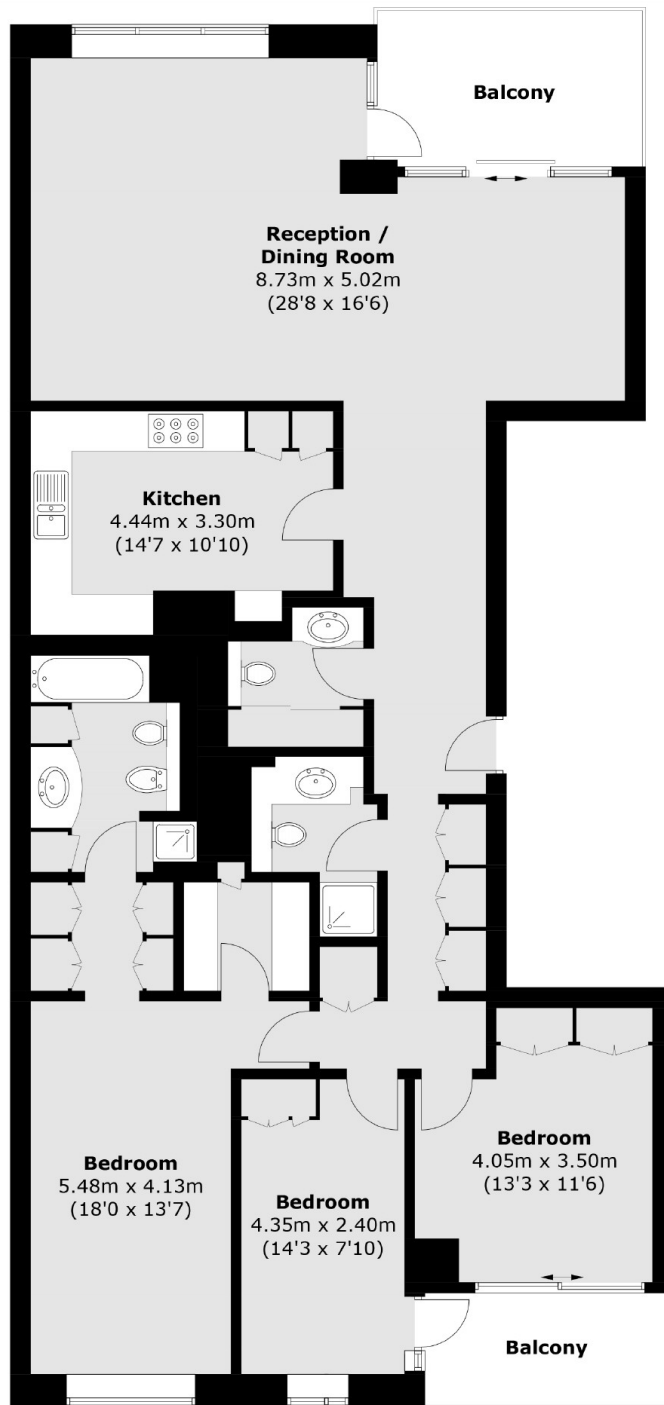
A spacious three bedroom, two bathroom property, with breathtaking views of the river Thames from the private balcony.

Chelsea Harbour is an exclusive development located next to the River Thames. Imperial Wharf railway station and river boats to the city are moments away.

Features

- Three Bedrooms
- Two Bathrooms
- River Views
- Porter
- Private Balcony
- Parking Space

Thames Quay, London, SW10



Total area (approx.): 141.4 sq. m (1,522.0 sq. ft)
Balconies: 14.9 sq. m (160.4 sq. ft)

Dexters

Chelsea Harbour
5 Design Centre East
London
SW10 OXF

020 7590 9515

Energy Rating: C. We aim to make our particulars both accurate and reliable. However they are not guaranteed; nor do they form part of an offer or contract. If you require clarification on any points then please contact us, especially if you're traveling some distance to view. Please note that appliances and heating systems have not been tested and therefore no warranties can be given as to their good working order.

 **RICS** | Regulated
Estate Agent
and Letting Agent

[dexters.co.uk](https://www.dexters.co.uk)