



The Boulevard, SW6

£600 Per week

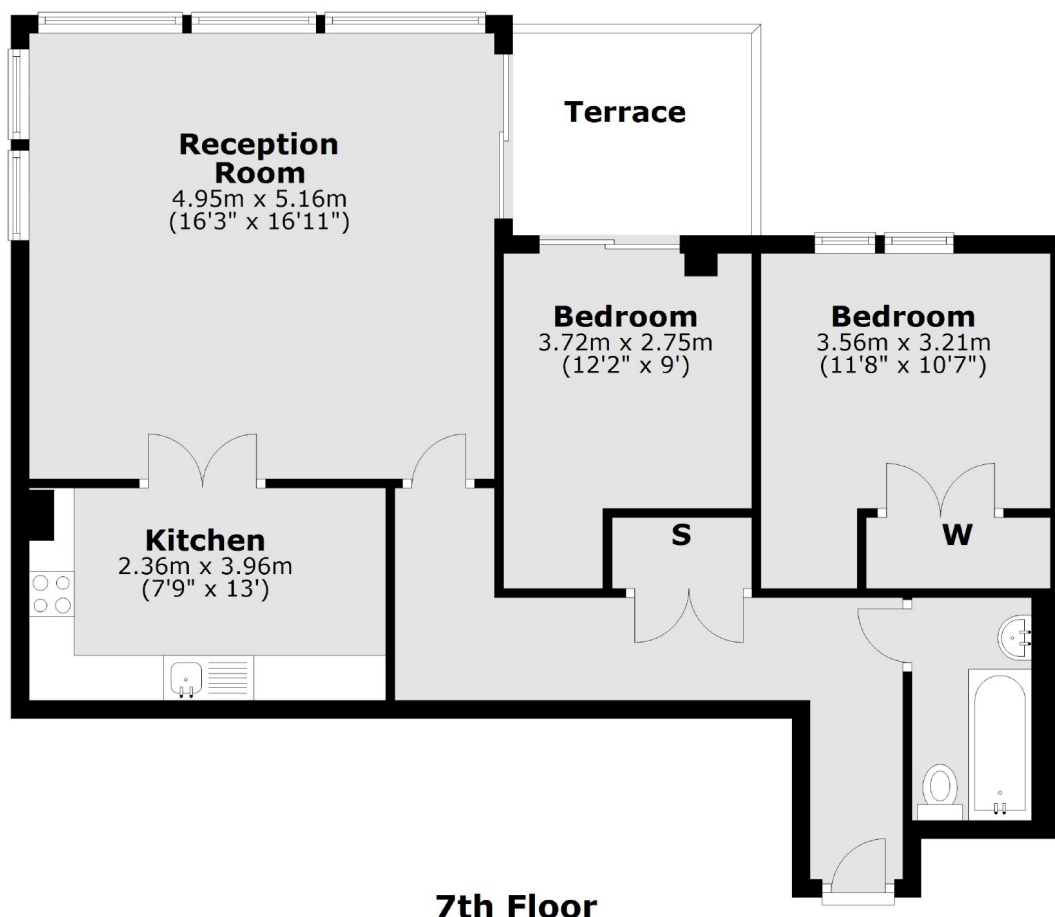
A bright two double bedroom, one bathroom apartment with a private balcony located within the prestigious Imperial Wharf development on the River Thames.

Imperial Wharf offers a number of excellent restaurants and bars and the river bus service provides direct access to Blackfriars and Putney Piers.

Features

- Two Double Bedrooms
- One Bathroom
- Wood Floors
- Private Balcony
- 24 Hour Concierge
- Imperial Wharf Overground

The Boulevard, London, SW6



Total area: approx. 73.1 sq. metres (786.5 sq. feet)