

## Carlyle Court, SW10

**£850** Per week

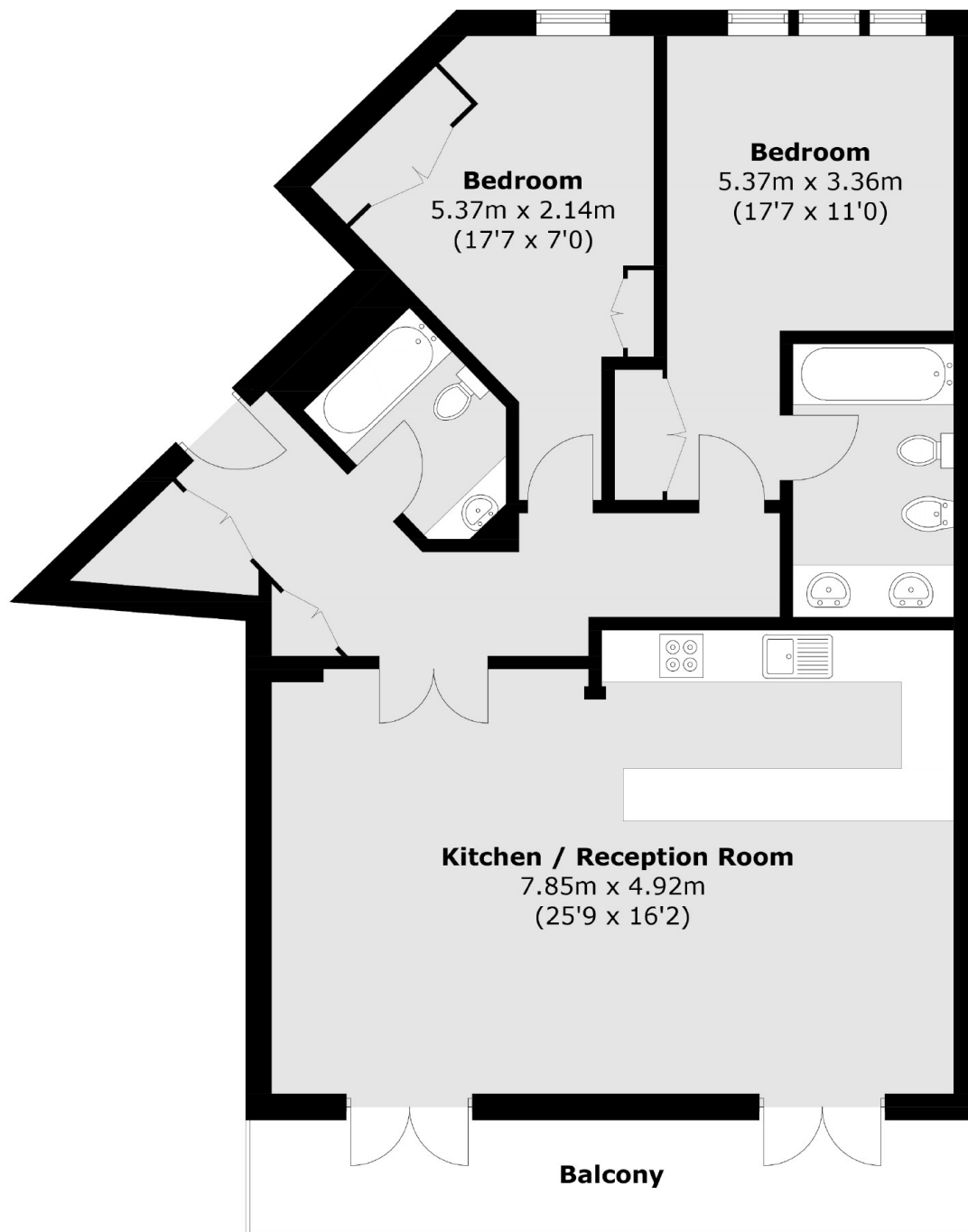
A lovely two bedroom, two bathroom property with a private balcony in Chelsea Harbour. The property is available from September for 8 months.

Chelsea Harbour is an exclusive development located next to the River Thames not far from the Kings Road. Imperial Wharf railway station and river boats to the city are moments away.

### Features

- Two Bedrooms
- Two Bathrooms
- Furnished
- Private Balcony
- Porter
- Parking Separate

# Carlyle Court, London, SW10



Gross Internal Area (approx.): 95.0 sq. m (1022.6 sq. ft)  
Balcony (approx.): 10.8 sq. m (116.2 sq. ft)