



## Lensbury Avenue, SW6

£1,569 Per week

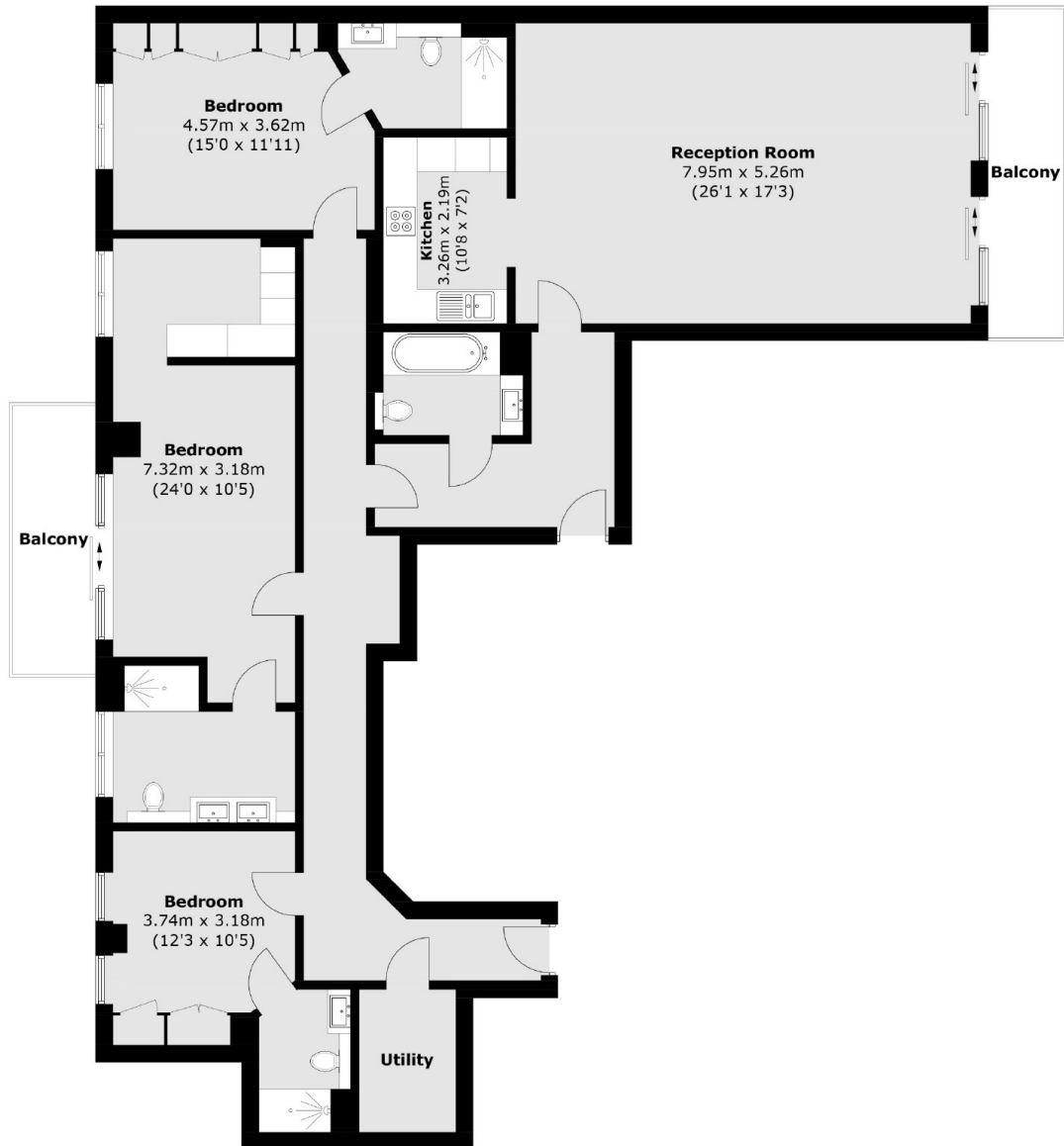
A stunning three bedroom apartment with floor to ceiling windows in a popular riverside development. This apartment has superb living space with fully integrated kitchen and generous lounge with sliding doors leading out onto the balcony. There is one underground parking space and 24 hour porterage.

Imperial Wharf offers a number of excellent restaurants and bars and the river bus service provides direct access to Blackfriars and Putney Piers.

### Features

- Three Double Bedrooms
- Two Bathrooms
- Furnished
- Porterage & Security Riverside
- River Views
- Underground Parking Space

# Lensbury Avenue, London, SW6



**Fourth Floor**

Total area (approx.): 163.3 sq. m (1,757.8 sq. ft)  
Balcony: 14.4 sq. m (155.0 sq. ft)