

## Carlyle Court, SW10

£1,500 Per week

SHORT LET. A stunning lateral apartment finished to a high standard in Chelsea Harbour. This property has two double bedrooms, two bathrooms, a private balcony, a porter and an underground parking space.

Chelsea Harbour is an exclusive development located next to the River Thames not far from the Kings Road. Imperial Wharf railway station and river boats to the city are moments away.

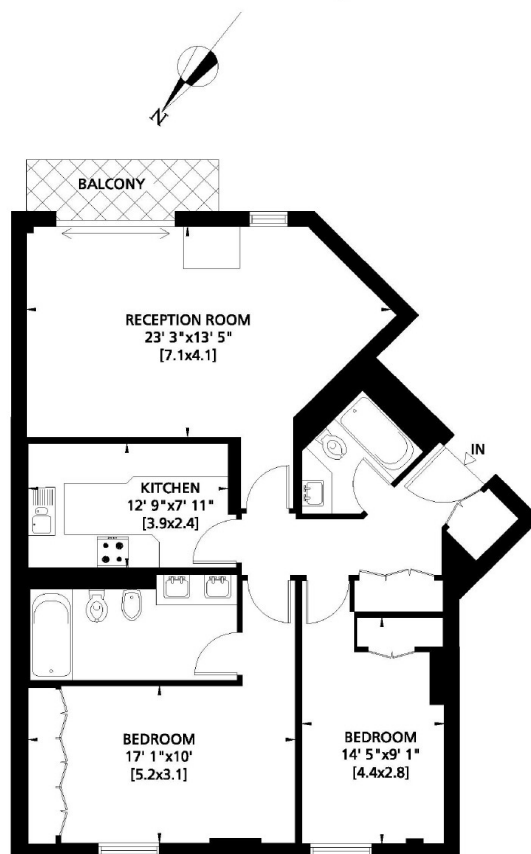
### Features

- Two Double Bedrooms
- Two Bathrooms
- Short Let
- One Parking Space
- Available September 9th
- 24/hrs Security

# Carlyle Court, London, SW10

## CHELSEA HARBOUR LONDON SW10

Gross Internal Area: 93 Sq. metres  
1000 Sq. feet



SECOND FLOOR